



UK Office

Everest Biotech Ltd

Cherwell Innovation Centre
77 Heyford Park
Upper Heyford
Oxfordshire
OX25 5HD
UK

Enquiries:

info@everestbiotech.com

Sales:

sales@everestbiotech.com

Tech support:

support@everestbiotech.com

Tel: +44 (0)1869 238326

www.everestbiotech.com

**Research Use Only. Not for
diagnostic or therapeutic use.**

EB07725 - Goat Anti-PTPN6 / SHP1 (internal region) Antibody

Size: 100µg specific antibody in 200µl



Target Protein

Principal Names: PTPN6, SHP1, protein tyrosine phosphatase, non-receptor type 6, HCP, HCPH, HPTP1C, PTP-1C, SH-PTP1, SHP-1, SHP-1L, 70 kda SHP-1L protein, hematopoietic cell phosphatase, hematopoietic cell protein-tyrosine phosphatase, protein-tyrosine phosphatase 1C

Official Symbol: PTPN6

Accession Number(s): NP_536858.1; NP_002822.2

Human GeneID(s): [5777](#)

Non-Human GeneID(s): 15170 (mouse), 116689 (rat)

Important Comments: This antibody is expected to recognise both reported isoforms (NP_536858.1 and NP_002822.2). Please note this antibody was designed using the mouse sequence, which differs by 1 amino acid from the human sequence.

Immunogen

Peptide with sequence C-KASRTSSKHKEE, from the internal region of the protein sequence according to NP_536858.1; NP_002822.2.

Please note the [peptide](#) is available for sale.

Purification and Storage

Purified from goat serum by ammonium sulphate precipitation followed by antigen affinity chromatography using the immunizing peptide.

Supplied at 0.5 mg/ml in Tris saline, 0.02% sodium azide, pH7.3 with 0.5% bovine serum albumin.

Aliquot and store at -20°C. Minimize freezing and thawing.

Applications Tested

Peptide ELISA: antibody detection limit dilution 1:128000.

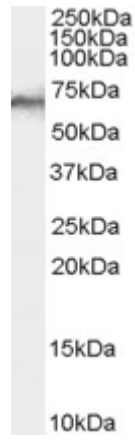
Western blot: Approx 70kDa band observed in Human Liver and Mouse Thymus lysates and approx 70-75kDa in Rat Thymus lysates (calculated MW of 67.6kDa according to Human NP_536858.1 and Mouse NP_038573.2, and 69.6kDa according to Rat NP_446360.1). Recommended concentration: 0.01-0.1µg/ml. Primary incubation 1 hour at room temperature.

IHC: Paraffin embedded Human Thyroid. Recommended concentration: 5µg/ml.

Species Reactivity

Tested: Human, Mouse, Rat

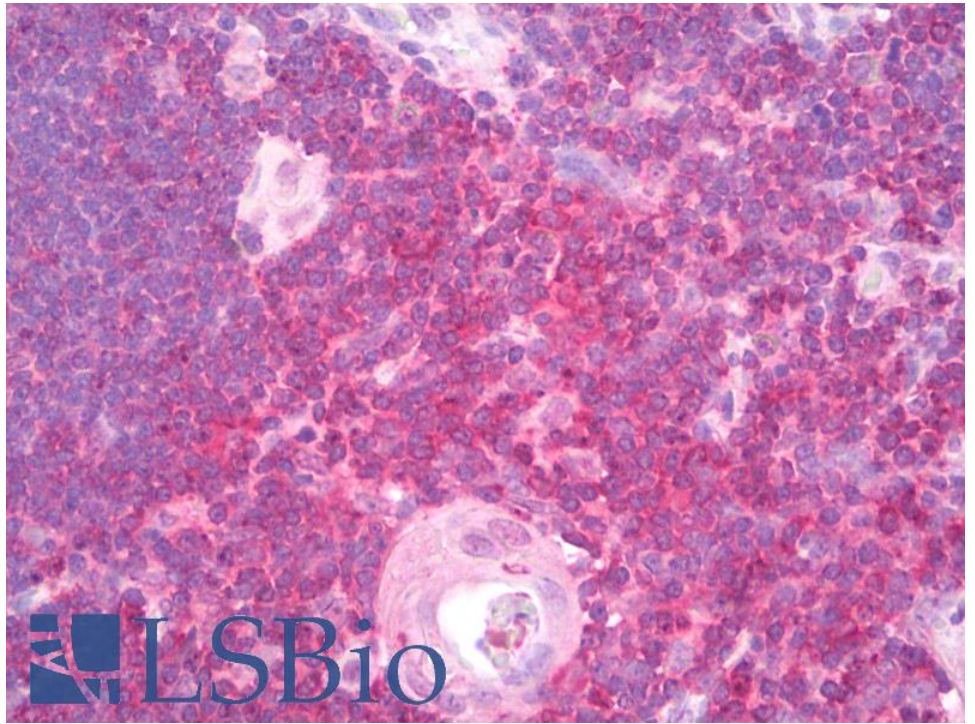
Expected from sequence similarity: Human, Mouse, Rat, Dog



EB07725 (0.1 μ g/ml) staining of Human Liver lysate (35 μ g protein in RIPA buffer). Detected by chemiluminescence.



EB07725 (0.01 μ g/ml) staining of Mouse Thymus (A) and (0.1 μ g/ml) Rat Thymus (B) lysate (35 μ g protein in RIPA buffer). Detected by chemiluminescence.



EB07725 (5µg/ml) staining of paraffin embedded Human Thyroid. Steamed antigen retrieval with citrate buffer pH 6, AP-staining.