



UK Office

Everest Biotech Ltd

Cherwell Innovation Centre
77 Heyford Park
Upper Heyford
Oxfordshire
OX25 5HD
UK

Enquiries:

info@everestbiotech.com

Sales:

sales@everestbiotech.com

Tech support:

support@everestbiotech.com

Tel: +44 (0)1869 238326

www.everestbiotech.com

**Research Use Only. Not for
diagnostic or therapeutic use.**

EB10158 - Goat Anti-PTPRB Antibody

Size: 100µg specific antibody in 200µl



Target Protein

Principal Names: DKFZp686E2262, DKFZp686H15164, FLJ44133, HPTPB, HPTP-BETA, MGC142023, MGC59935, protein tyrosine phosphatase, receptor type, B, protein tyrosine phosphatase, receptor type, beta polypeptide, PTPB, R-PTP-BETA, VEPTP, PTPRB

Official Symbol: PTPRB

Accession Number(s): NP_001103224.1; NP_002828.3; NP_001193901.1

Human GeneID(s): [5787](#)

Non-Human GeneID(s): 314843 (rat)

Immunogen

Peptide with sequence C-ENHSFSQERTVPDK, from the internal region of the protein sequence according to NP_001103224.1; NP_002828.3; NP_001193901.1.

Please note the [peptide](#) is available for sale.

Purification and Storage

Purified from goat serum by ammonium sulphate precipitation followed by antigen affinity chromatography using the immunizing peptide.

Supplied at 0.5 mg/ml in Tris saline, 0.02% sodium azide, pH7.3 with 0.5% bovine serum albumin.

Aliquot and store at -20°C. Minimize freezing and thawing.

Applications Tested

Peptide ELISA: antibody detection limit dilution 1:16000.

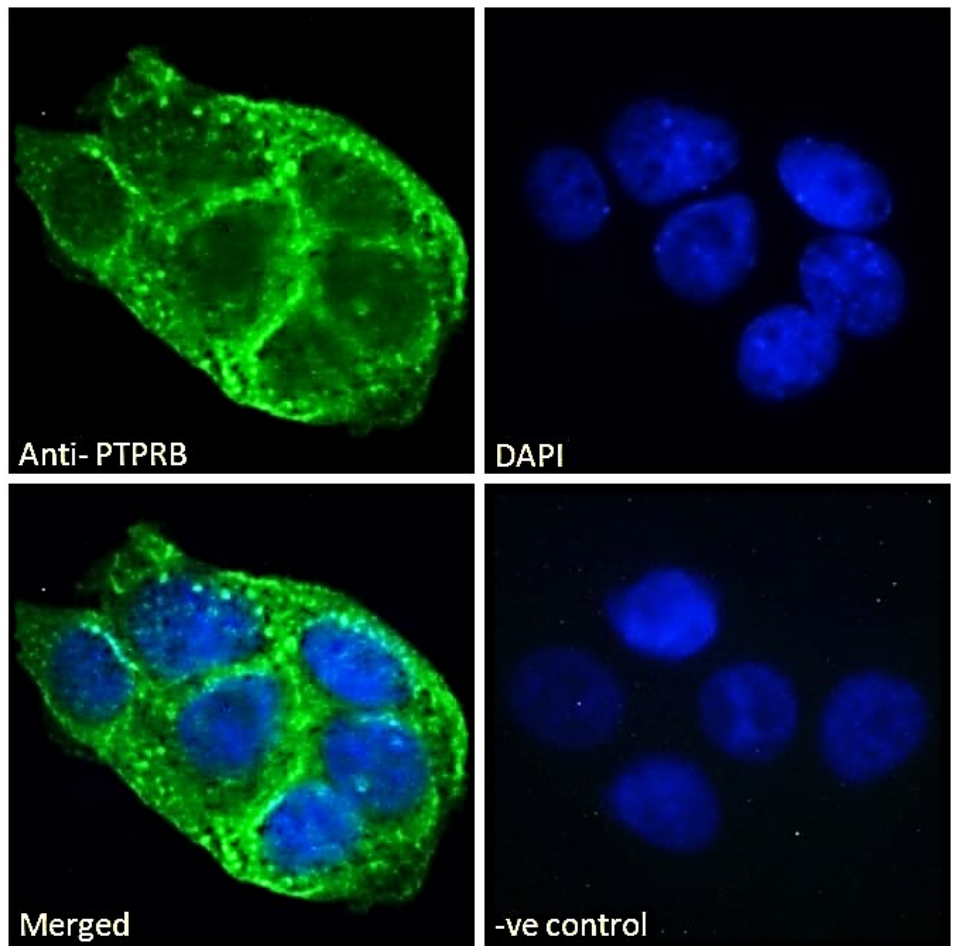
Immunofluorescence: Strong expression of the protein seen in the membranes and vesicles of A431 cells. Recommended concentration: 10µg/ml.

Flow Cytometry: Flow cytometric analysis of A431 cells. Recommended concentration: 10ug/ml.

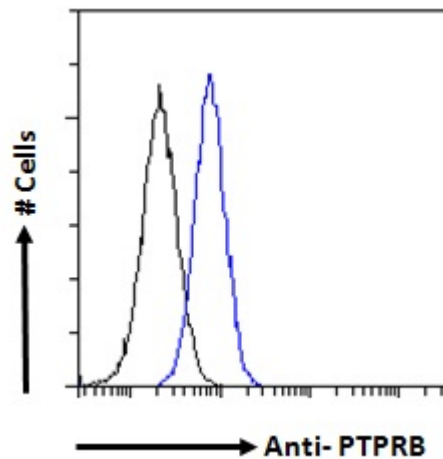
Species Reactivity

Tested: Human

Expected from sequence similarity: Human, Rat, Pig, Dog, Cow



EB10158 Immunofluorescence analysis of paraformaldehyde fixed A431 cells, permeabilized with 0.15% Triton. Primary incubation 1hr (10ug/ml) followed by Alexa Fluor 488 secondary antibody (2ug/ml), showing membrane and vesicle staining. The nuclear stain is DAPI (blue). Negative control: Unimmunized goat IgG (10ug/ml) followed by Alexa Fluor 488 secondary antibody (2ug/ml).



EB10158 Flow cytometric analysis of paraformaldehyde fixed A431 cells (blue line), permeabilized with 0.5% Triton. Primary incubation 1hr (10ug/ml) followed by Alexa Fluor 488 secondary antibody (1ug/ml). IgG control: Unimmunized goat IgG (black line) followed by Alexa Fluor 488 secondary antibody.