

UK Office

Everest Biotech Ltd

Cherwell Innovation Centre
77 Heyford Park
Upper Heyford
Oxfordshire
OX25 5HD
UK

Enquiries:

info@everestbiotech.com

Sales:

sales@everestbiotech.com

Tech support:

support@everestbiotech.com

Tel: +44 (0)1869 238326

www.everestbiotech.com

**Research Use Only. Not for
diagnostic or therapeutic use.**

EB08229 - Goat Anti-PTPRM Antibody

Size: 100µg specific antibody in 200µl



Target Protein

Principal Names: PTPRM, protein tyrosine phosphatase, receptor type, M, MGC166994, PTPRL1, R-PTP-MU, RPTPM, RPTPU, hR-PTPu, protein tyrosine phosphatase mu, protein tyrosine phosphatase, receptor type, mu polypeptide

Official Symbol: PTPRM

Accession Number(s): NP_001098714.1; NP_002836.3

Human GeneID(s): [5797](#)

Important Comments: This antibody is expected to recognise both reported isoforms (NP_001098714.1 and NP_002836.3).

Immunogen

Peptide with sequence C-KLIRQVDKWQEEYN, from the internal region of the protein sequence according to NP_001098714.1; NP_002836.3.

Please note the [peptide](#) is available for sale.

Purification and Storage

Purified from goat serum by ammonium sulphate precipitation followed by antigen affinity chromatography using the immunizing peptide.

Supplied at 0.5 mg/ml in Tris saline, 0.02% sodium azide, pH7.3 with 0.5% bovine serum albumin.

Aliquot and store at -20°C. Minimize freezing and thawing.

Applications Tested

Peptide ELISA: antibody detection limit dilution 1:16000.

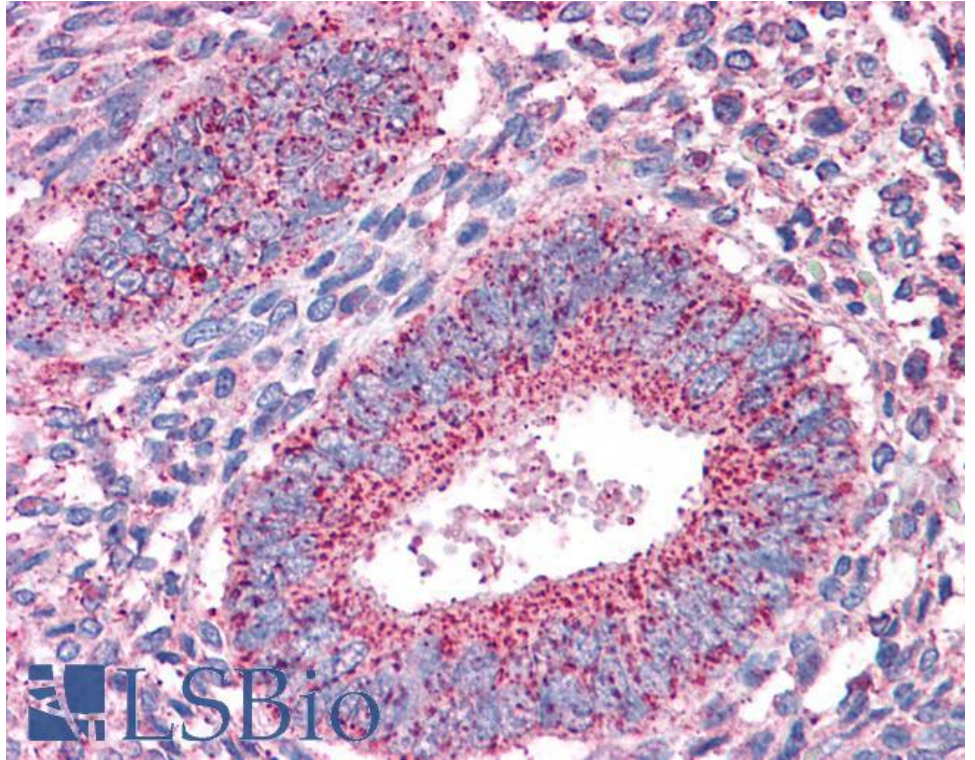
Western blot: Preliminary experiments gave bands at approx 110kDa and 16kDa in Rat Retina lysates after 0.1µg/ml antibody staining. Please note that currently we cannot find an explanation in the literature for the bands we observe given the calculated size of 165kDa according to Human NP_001098714.1. Both detected bands were successfully blocked by incubation with the immunizing peptide (and BLAST results with the immunizing peptide sequence did not identify any other proteins to explain the additional bands).

IHC: Paraffin embedded Human Uterus and Thyroid. Recommended concentration: 3.75µg/ml.

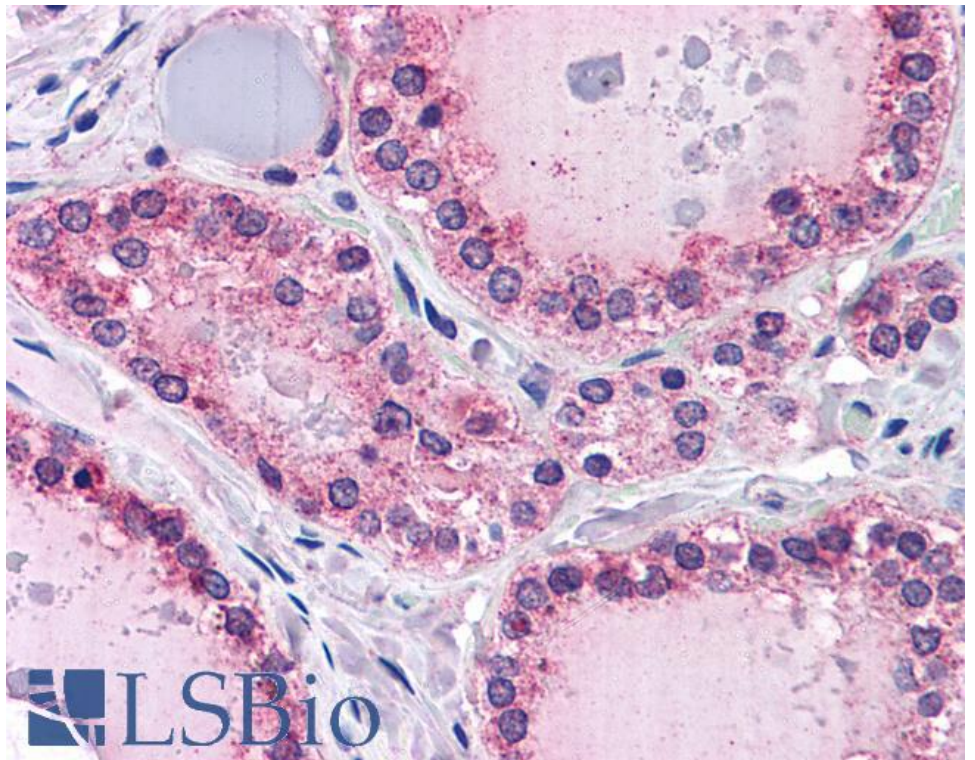
Species Reactivity

Tested: Human

Expected from sequence similarity: Human, Mouse, Dog



EB08229 (3.75µg/ml) staining of paraffin embedded Human Uterus. Steamed antigen retrieval with citrate buffer pH 6, AP-staining.



EB08229 (3.75µg/ml) staining of paraffin embedded Human Thyroid. Steamed antigen retrieval with citrate buffer pH 6, AP-staining.