



UK Office

Everest Biotech Ltd

Cherwell Innovation Centre
77 Heyford Park
Upper Heyford
Oxfordshire
OX25 5HD
UK

Enquiries:

info@everestbiotech.com

Sales:

sales@everestbiotech.com

Tech support:

support@everestbiotech.com

Tel: +44 (0)1869 238326

Fax: +44 (0)1869 238327

US Office

Everest Biotech c/o Abcore

405 Maple Street, Suite A106
Ramona,
CA 92065
USA

Inquiries:

info@everestbiotech.com

Sales:

usasales@everestbiotech.com

Tech support:

support@everestbiotech.com

Tel: 888-320-4628 (toll-free)

Fax: 888-841-9041

www.everestbiotech.com

**Research Use Only. Not for
diagnostic or therapeutic use.**

EB08429 - Goat Anti-PU.1 Antibody

Size: 100µg specific antibody in 200µl



Target Protein

Principal Names: PU.1, SPI1, spleen focus forming virus (SFFV) proviral integration oncogene spi1, hCG_25181, SFPI1, SPI-1, SPI-A, 31 kDa transforming protein, SPI-1 proto-oncogene, hematopoietic transcription factor PU.1

Official Symbol: SPI1

Accession Number(s): NP_001074016.1; NP_003111.2

Human GeneID(s): [6688](#)

Non-Human GeneID(s): 366126 (rat)

Important Comments: This antibody is expected to recognise both reported isoforms (NP_001074016.1; NP_003111.2).

Immunogen

Peptide with sequence C-DLYQRQTHEY, from the internal region of the protein sequence according to NP_001074016.1; NP_003111.2.

Please note the [peptide](#) is available for sale.

Purification and Storage

Purified from goat serum by ammonium sulphate precipitation followed by antigen affinity chromatography using the immunizing peptide.

Supplied at 0.5 mg/ml in Tris saline, 0.02% sodium azide, pH7.3 with 0.5% bovine serum albumin.

Aliquot and store at -20°C. Minimize freezing and thawing.

Applications Tested

Peptide ELISA: antibody detection limit dilution 1:32000.

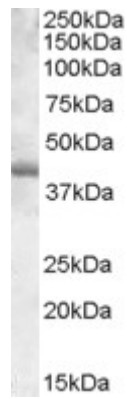
Western blot: Approx 40kDa band observed in lysates of DAUDI and K562 (calculated MW of 31.2kDa according to NP_001074016.1 and of 31.1kDa according to NP_003111.2). The observed molecular weight corresponds to earlier findings in literature with different antibodies (Harendza S et al, J Biol Chem. 2000 Jun 30;275(26):19552-9.; PMID: 10867017). Recommended concentration: 0.03-0.1µg/ml. Primary incubation was 1 hour.

IHC: Paraffin embedded Human Spleen and Colon (lymphoid aggregate). Recommended concentration: 3.75µg/ml.

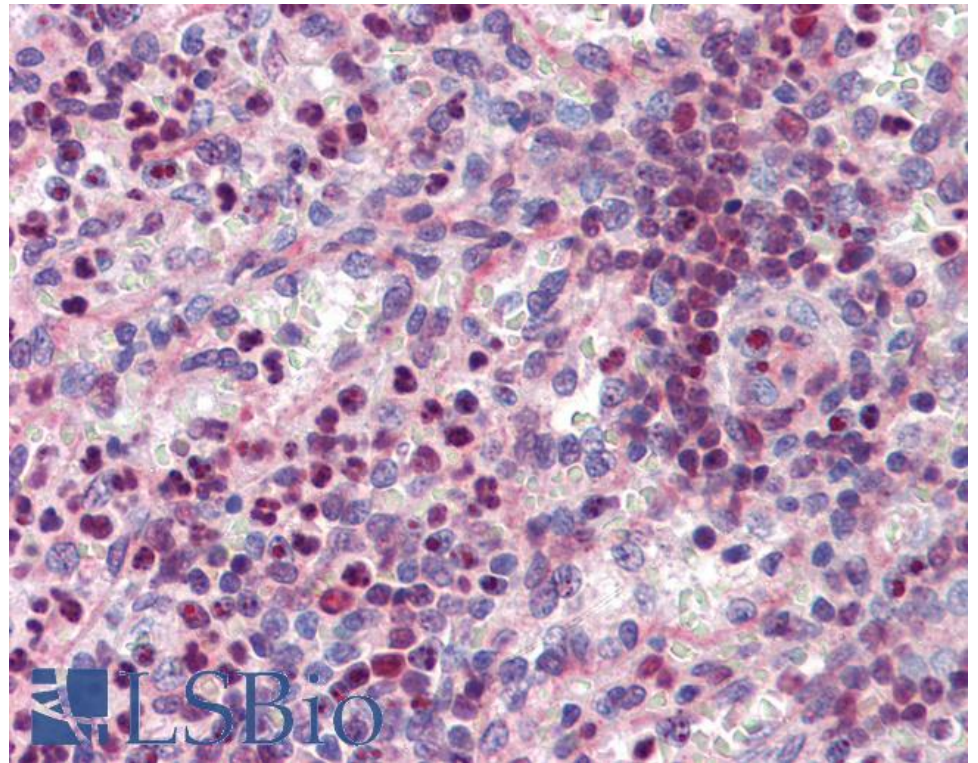
Species Reactivity

Tested: Human

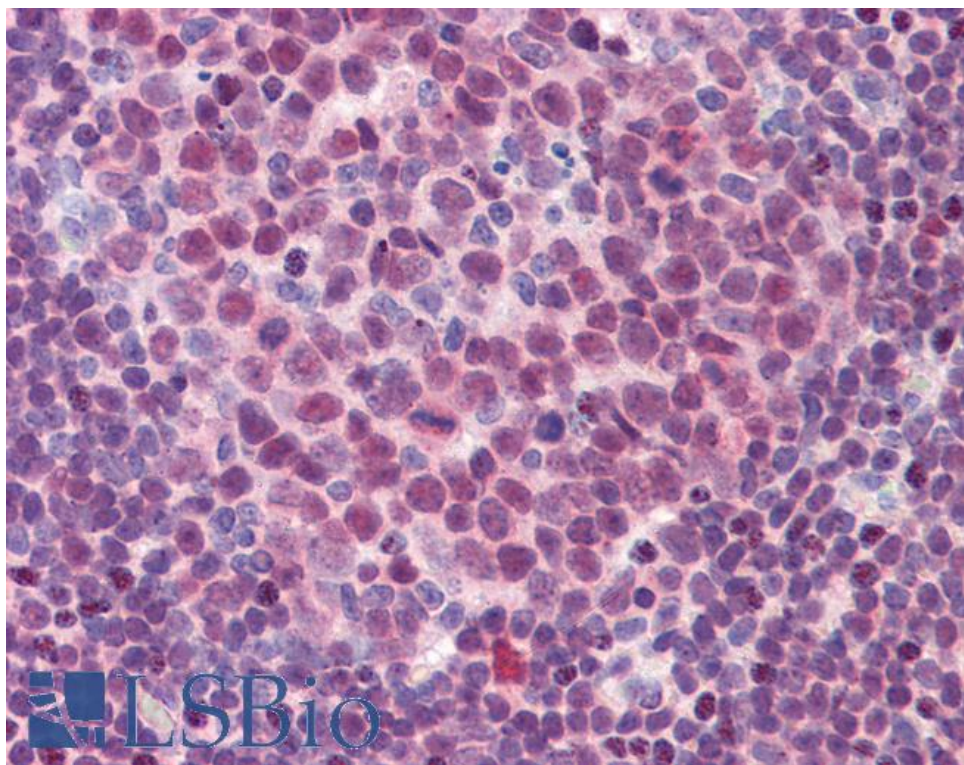
Expected from sequence similarity: Human, Rat



EB08429 (0.03 μ g/ml) staining of DAUDI lysate (35 μ g protein in RIPA buffer). Detected by chemiluminescence.



EB08429 (3.75 μ g/ml) staining of paraffin embedded Human Spleen. Steamed antigen retrieval with citrate buffer pH 6, AP-staining.



EB08429 (3.75µg/ml) staining of paraffin embedded Human Colon. Steamed antigen retrieval with citrate buffer pH 6, AP-staining.