



UK Office

Everest Biotech Ltd

Cherwell Innovation Centre
77 Heyford Park
Upper Heyford
Oxfordshire
OX25 5HD
UK

Enquiries:

info@everestbiotech.com

Sales:

sales@everestbiotech.com

Tech support:

support@everestbiotech.com

Tel: +44 (0)1869 238326

www.everestbiotech.com

**Research Use Only. Not for
diagnostic or therapeutic use.**

EB06679 - Goat Anti-PUM2 Antibody

Size: 100µg specific antibody in 200µl



Target Protein

Principal Names: PUM2, PUMH2, PUML2, KIAA0235, pumilio homolog 2 (Drosophila), pumilio (Drosophila) homolog 2, FLJ36528, MGC138251, MGC138253, OTTHUMP00000200539, pumilio homolog 2

Official Symbol: PUM2

Accession Number(s): NP_056132.1

Human GeneID(s): [23369](#)

Immunogen

Peptide with sequence C-DQNRDLKQGDDDDSK, from the internal region of the protein sequence according to NP_056132.1.

Please note the [peptide](#) is available for sale.

Purification and Storage

Purified from goat serum by ammonium sulphate precipitation followed by antigen affinity chromatography using the immunizing peptide.

Supplied at 0.5 mg/ml in Tris saline, 0.02% sodium azide, pH7.3 with 0.5% bovine serum albumin.

Aliquot and store at -20°C. Minimize freezing and thawing.

Applications Tested

Peptide ELISA: antibody detection limit dilution 1:4000.

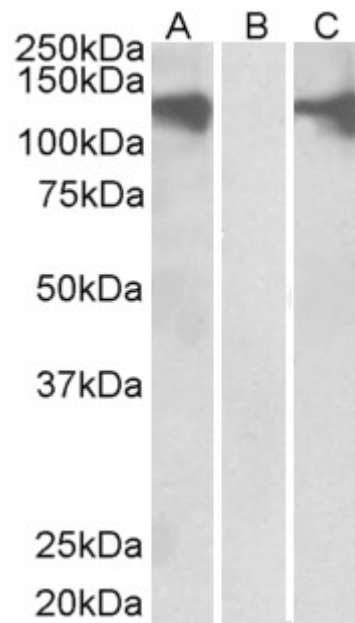
Western blot: In transfected HEK293 transiently expressing full-length Human PUM2 (myc and DYKDDDDK tagged), a band of approx. 140kDa was observed. No bands were observed in mock-transfected HEK293 and the same band was observed using anti-DYKDDDDK tag antibody. Recommended concentration 0.3-0.5µg/ml.

IHC: Paraffin embedded Human Testis. Recommended concentration: 10µg/ml.

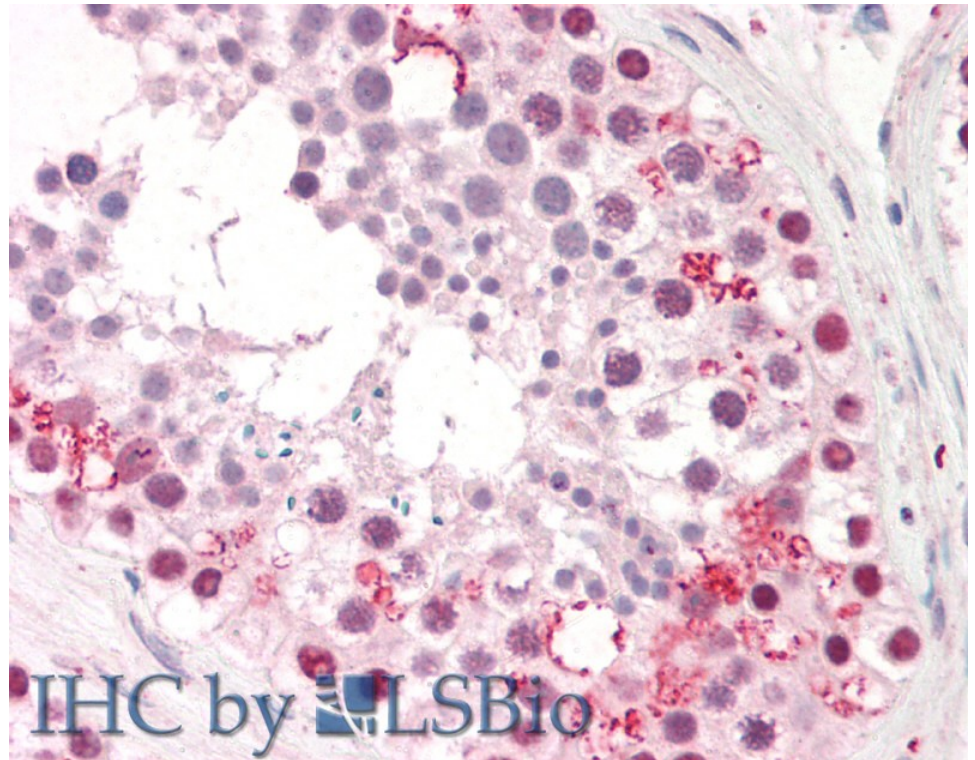
Species Reactivity

Tested: Human

Expected from sequence similarity: Human, Cow



HEK293 lysate (10ug protein in RIPA buffer) overexpressing Human PUM2 with DYKDDDDK tag probed with EB06679 (0.5ug/ml) in Lane A and probed with anti- DYKDDDDK Tag (1/3000) in lane C. Mock-transfected HEK293 probed with EB06679 (1mg/ml) in Lane B. Primary incubations were for 1 hour. Detected by chemiluminescence.



EB06679 (10µg/ml) staining of paraffin embedded Human Testis. Steamed antigen retrieval with citrate buffer pH 6, AP-staining.