



UK Office

Everest Biotech Ltd

Cherwell Innovation Centre
77 Heyford Park
Upper Heyford
Oxfordshire
OX25 5HD
UK

Enquiries:

info@everestbiotech.com

Sales:

sales@everestbiotech.com

Tech support:

support@everestbiotech.com

Tel: +44 (0)1869 238326

Fax: +44 (0)1869 238327

US Office

Everest Biotech c/o Abcore

405 Maple Street, Suite A106
Ramona,
CA 92065
USA

Inquiries:

info@everestbiotech.com

Sales:

usasales@everestbiotech.com

Tech support:

support@everestbiotech.com

Tel: 888-320-4628 (toll-free)

Fax: 888-841-9041

www.everestbiotech.com

**Research Use Only. Not for
diagnostic or therapeutic use.**

EB09172 - Goat Anti-PXR / NR1I2 Antibody

Size: 100µg specific antibody in 200µl



Target Protein

Principal Names: PXR, NR1I2, nuclear receptor subfamily 1, group I, member 2, BXR, ONR1, PAR, PAR1, PAR2, PARq, PRR, SAR, SXR, orphan nuclear receptor, pregnane X receptor, steroid and xenobiotic receptor

Official Symbol: NR1I2

Accession Number(s): NP_003880.3; NP_071285.1; NP_148934.1

Human GeneID(s): [8856](#)

Important Comments: This antibody is expected to recognize all reported isoforms (NP_071285.1; NP_148934.1; NP_003880.3).

Immunogen

Peptide with sequence EQFAITLKSYLECNR, from the internal region of the protein sequence according to NP_003880.3; NP_071285.1; NP_148934.1.

Please note the [peptide](#) is available for sale.

Purification and Storage

Purified from goat serum by ammonium sulphate precipitation followed by antigen affinity chromatography using the immunizing peptide.

Supplied at 0.5 mg/ml in Tris saline, 0.02% sodium azide, pH7.3 with 0.5% bovine serum albumin.

Aliquot and store at -20°C. Minimize freezing and thawing.

Applications Tested

Peptide ELISA: antibody detection limit dilution 1:4000.

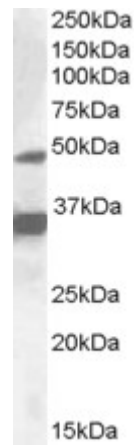
Western blot: Approx. 48kDa band observed in lysates of cell line HepG2 (calculated MW of 49.8kDa according to NP_003880.3). Recommended concentration: 1-3µg/ml. An additional band of unknown identity was also consistently observed at 35kDa. This band was successfully blocked by incubation with the immunizing peptide. Primary incubation was 1 hour.

IHC: Paraffin embedded Human Small Intestine. Recommended concentration: 3.75µg/ml.

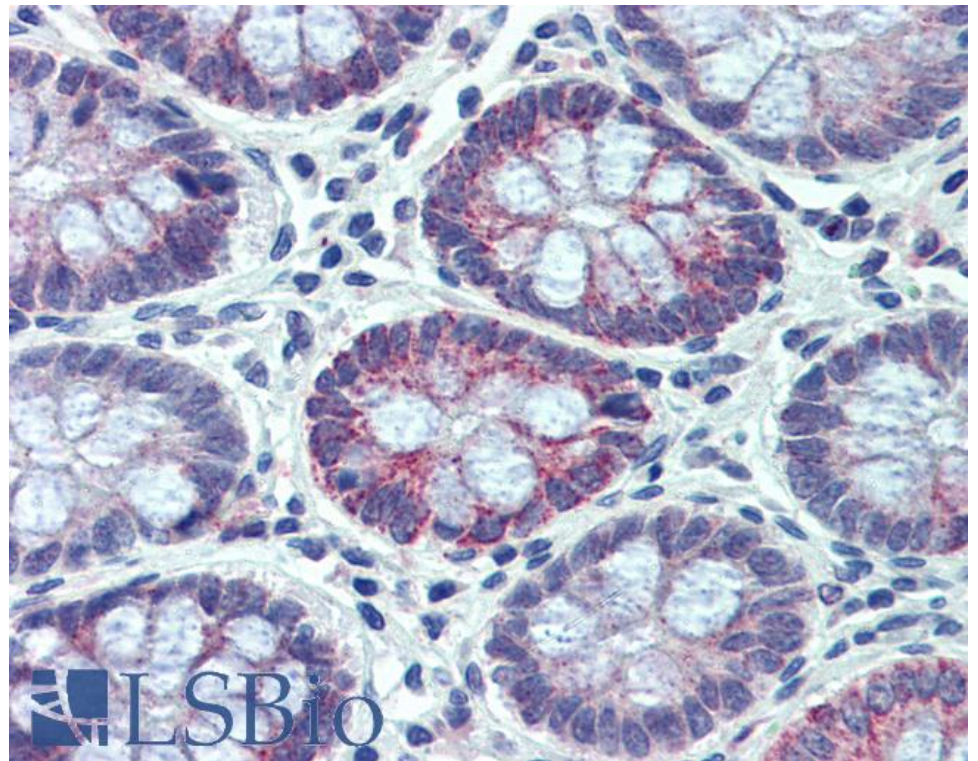
Species Reactivity

Tested: Human

Expected from sequence similarity: Human



EB09172 (1 μ g/ml) staining of HepG2 lysate (35 μ g protein in RIPA buffer). Detected by chemiluminescence.



EB09172 (3.75 μ g/ml) staining of paraffin embedded Human Small Intestine. Steamed antigen retrieval with citrate buffer pH 6, AP-staining.