



## UK Office

### Everest Biotech Ltd

Cherwell Innovation Centre  
77 Heyford Park  
Upper Heyford  
Oxfordshire  
OX25 5HD  
UK

Enquiries:

[info@everestbiotech.com](mailto:info@everestbiotech.com)

Sales:

[sales@everestbiotech.com](mailto:sales@everestbiotech.com)

Tech support:

[support@everestbiotech.com](mailto:support@everestbiotech.com)

Tel: +44 (0)1869 238326

Fax: +44 (0)1869 238327

## US Office

### Everest Biotech c/o Abcore

405 Maple Street, Suite A106  
Ramona,  
CA 92065  
USA

Inquiries:

[info@everestbiotech.com](mailto:info@everestbiotech.com)

Sales:

[usasales@everestbiotech.com](mailto:usasales@everestbiotech.com)

Tech support:

[support@everestbiotech.com](mailto:support@everestbiotech.com)

Tel: 888-320-4628 (toll-free)

Fax: 888-841-9041

[www.everestbiotech.com](http://www.everestbiotech.com)

**Research Use Only. Not for  
diagnostic or therapeutic use.**

## EB06731 - Goat Anti-Pyruvate dehydrogenase / PDHX Antibody

Size: 100µg specific antibody in 200µl



### Target Protein

**Principal Names:** PDHX, pyruvate dehydrogenase complex, component X, E3BP, OPDX, PDX1, proX, DLDBP, E3-binding protein, pyruvate dehydrogenase complex, lipoyl-containing component X, dihydrolipoamide dehydrogenase-binding protein of pyruvate dehydrogenase complex, pyruvate dehydrogenase complex, E3-binding protein subunit, pyruvate dehydrogenase protein X component, mitochondrial

**Official Symbol:** PDHX

**Accession Number(s):** NP\_003468.2; NP\_001128496.1; NP\_001159630.1

**Human GeneID(s):** [8050](#)

**Non-Human GeneID(s):** 27402 (mouse)

**Important Comments:** This antibody is expected to recognise all reported isoforms.

### Immunogen

Peptide with sequence C-KSFKANLENPIRLA, from the C Terminus of the protein sequence according to NP\_003468.2; NP\_001128496.1; NP\_001159630.1.

Please note the [peptide](#) is available for sale.

### Purification and Storage

Purified from goat serum by ammonium sulphate precipitation followed by antigen affinity chromatography using the immunizing peptide.

Supplied at 0.5 mg/ml in Tris saline, 0.02% sodium azide, pH7.3 with 0.5% bovine serum albumin.

Aliquot and store at -20°C. Minimize freezing and thawing.

### Applications Tested

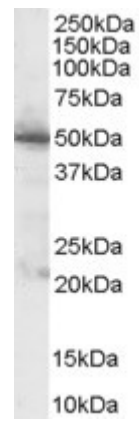
**Peptide ELISA:** antibody detection limit dilution 1:32000.

**Western blot:** Approx 50kDa band observed in Human Pancreas lysate (calculated MW of 54.2kDa according to NP\_003468.1). In transfected HEK293 transiently expressing PDHX a band of approx. 50kDa is observed. This band is not observed in the non-transfected HEK293. Recommended concentration: 0.1-1µg/ml.

### Species Reactivity

**Tested:** Human

**Expected from sequence similarity:** Human, Mouse, Rat, Dog



EB06371 (1µg/ml) staining of Human Pancreas lysate (35µg protein in RIPA buffer). Primary incubation was 1 hour. Detected by chemiluminescence.