



UK Office

Everest Biotech Ltd

Cherwell Innovation Centre
77 Heyford Park
Upper Heyford
Oxfordshire
OX25 5HD
UK

Enquiries:

info@everestbiotech.com

Sales:

sales@everestbiotech.com

Tech support:

support@everestbiotech.com

Tel: +44 (0)1869 238326

Fax: +44 (0)1869 238327

US Office

Everest Biotech c/o Abcore

405 Maple Street, Suite A106
Ramona,
CA 92065
USA

Inquiries:

info@everestbiotech.com

Sales:

usasales@everestbiotech.com

Tech support:

support@everestbiotech.com

Tel: 888-320-4628 (toll-free)

Fax: 888-841-9041

www.everestbiotech.com

**Research Use Only. Not for
diagnostic or therapeutic use.**

EB05574 - Goat Anti-RAB11A / YL8 Antibody

Size: 100µg specific antibody in 200µl



Target Protein

Principal Names: RAB11A, YL8, RAB11A, member RAS oncogene family, RAB 11A, member oncogene family, MGC1490, Ras-related protein Rab-11A

Official Symbol: RAB11A

Accession Number(s): NP_004654.1

Human GeneID(s): [8766](#)

Non-Human GeneID(s): 53869 (mouse), 81830 (rat)

Immunogen

Peptide with sequence TENKPKVQCCQNI, from the C Terminus of the protein sequence according to NP_004654.1.

Please note the [peptide](#) is available for sale.

Purification and Storage

Purified from goat serum by ammonium sulphate precipitation followed by antigen affinity chromatography using the immunizing peptide.

Supplied at 0.5 mg/ml in Tris saline, 0.02% sodium azide, pH7.3 with 0.5% bovine serum albumin.

Aliquot and store at -20°C. Minimize freezing and thawing.

Applications Tested

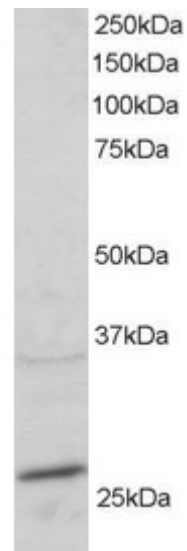
Peptide ELISA: antibody detection limit dilution 1:32000.

Western blot: Approx 26kDa band observed in Mouse Heart lysates (calculated MW of 24.4kDa according to NP_004654.1). In transfected HEK293 transiently expressing RAB11A a band of approx. 28kDa is observed. This band is not observed in the non-transfected HEK293. Recommended for use at 1-3µg/ml.

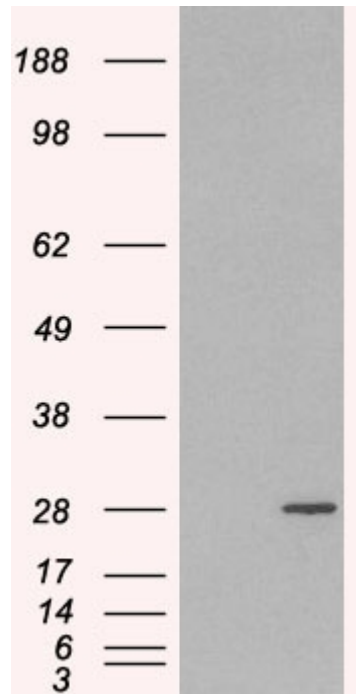
Species Reactivity

Tested: Mouse

Expected from sequence similarity: Human, Mouse, Rat, Cow



EB05574 staining (2µg/ml) of mouse heart lysate (RIPA buffer, 30µg total protein per lane). Primary incubated for 1 hour. Detected by western blot using chemiluminescence.



HEK293 overexpressing RAB11A(RC200352) and probed with EB05574 (mock transfection in first lane), tested by Origene.