



International Office

Everest Biotech Ltd

Vector Laboratories, Inc.
6737 Mowry Ave
Newark, CA 94560
United States

Customer Service:

customerservice@vectorlabs.com

Technical Service:

technical@vectorlabs.com

Tel: +1 (800) 227-6666

www.everestbiotech.com

**Research Use Only. Not for
diagnostic or therapeutic use.**

EB08547 - Goat Anti-RABIF Antibody

Size: 100µg specific antibody in 200µl



Target Protein

Principal Names: RABIF, RAB interacting factor, MSS4, RASGFR3, RASGRF3, RAB-interacting factor, Ras-specific guanine-releasing factor 3, guanine nucleotide exchange factor MSS4, mammalian suppressor of SEC4

Official Symbol: RABIF

Accession Number(s): NP_002862.2

Human GeneID(s): [5877](#)

Non-Human GeneID(s): 98710 (mouse), 304807 (rat)

Immunogen

Peptide with sequence C-ENVGFTKDVGNIK, from the internal region of the protein sequence according to NP_002862.2.

Please note the [peptide](#) is available for sale.

Purification and Storage

Purified from goat serum by ammonium sulphate precipitation followed by antigen affinity chromatography using the immunizing peptide.

Supplied at 0.5 mg/ml in Tris saline, 0.02% sodium azide, pH7.3 with 0.5% bovine serum albumin.

Aliquot and store at -20°C. Minimize freezing and thawing.

Applications Tested

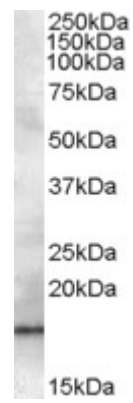
Peptide ELISA: antibody detection limit dilution 1:2000.

Western blot: Approx. 17kDa band observed in Human Prostate and Spleen lysates (calculated MW of 13.8kDa according to NP_002862.2). Recommended concentration: 1-3µg/ml.

Species Reactivity

Tested: Human

Expected from sequence similarity: Human, Mouse, Rat, Cow



EB08547 (1µg/ml) staining of Human Prostate lysate (35µg protein in RIPA buffer). Primary incubation was 1 hour. Detected by chemiluminescence.