



UK Office

Everest Biotech Ltd

Cherwell Innovation Centre
77 Heyford Park
Upper Heyford
Oxfordshire
OX25 5HD
UK

Enquiries:

info@everestbiotech.com

Sales:

sales@everestbiotech.com

Tech support:

support@everestbiotech.com

Tel: +44 (0)1869 238326

Fax: +44 (0)1869 238327

US Office

Everest Biotech c/o Abcore

405 Maple Street, Suite A106
Ramona,
CA 92065
USA

Inquiries:

info@everestbiotech.com

Sales:

usasales@everestbiotech.com

Tech support:

support@everestbiotech.com

Tel: 888-320-4628 (toll-free)

Fax: 888-841-9041

www.everestbiotech.com

**Research Use Only. Not for
diagnostic or therapeutic use.**

EB05314 - Goat Anti-RAC2 Antibody

Size: 100µg specific antibody in 200µl



Target Protein

Principal Names: RAC2, ras-related C3 botulinum toxin substrate 2 (rho family, small GTP binding protein Rac2), EN-7, Ras-related C3 botulinum toxin substrate 2, rho family, small GTP binding protein Rac2, Ras-related C3 botulinum toxin substrate 3 (rho family, small GTP-binding protein Rac2), Gx, HSPC022, small G protein

Official Symbol: RAC2

Accession Number(s): NP_002863.1

Human GeneID(s): [5880](#)

Immunogen

Peptide with sequence PGPTRQQKRACSL, from the C Terminus of the protein sequence according to NP_002863.1.

Please note the [peptide](#) is available for sale.

Purification and Storage

Purified from goat serum by ammonium sulphate precipitation followed by antigen affinity chromatography using the immunizing peptide.

Supplied at 0.5 mg/ml in Tris saline, 0.02% sodium azide, pH7.3 with 0.5% bovine serum albumin.

Aliquot and store at -20°C. Minimize freezing and thawing.

Applications Tested

Peptide ELISA: antibody detection limit dilution 1:32000.

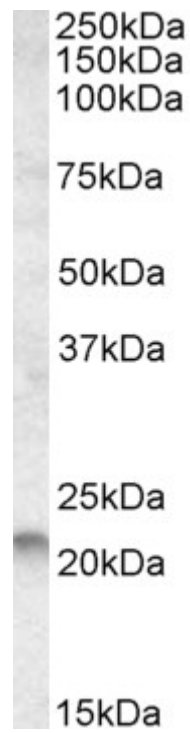
Western blot: Approx 22kDa band observed in lysates of cell line Molt4 (calculated MW of 21.4kDa according to NP_002863.1). Recommended concentration: 0.1-0.3µg/ml. Primary incubation 1 hour at room temperature.

IHC: In paraffin embedded Human Tonsil shows staining in mantle zone and some in the interfollicular area. Understained in germinal centre. Recommended concentration, 2-4µg/ml.

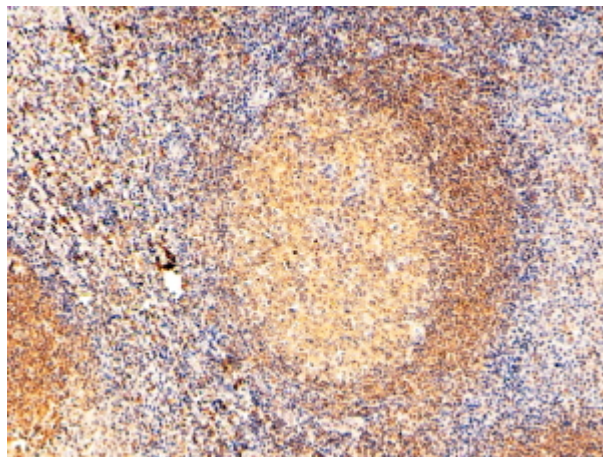
Species Reactivity

Tested: Human

Expected from sequence similarity: Human, Mouse, Rat



EB05314 (0.1µg/ml) staining of Molt4 lysate (35µg protein in RIPA buffer). Detected by chemiluminescence.



EB05314 (2µg/ml) staining of paraffin embedded Human Tonsil. Steamed antigen retrieval with Tris/EDTA buffer pH 9, HRP-staining.