



## EB05315-T - Goat Anti-RACGAP1 / MgcRacGAP Antibody - Trial

Size: 20µg specific antibody in 40µl



### UK Office

#### Everest Biotech Ltd

Cherwell Innovation Centre  
77 Heyford Park  
Upper Heyford  
Oxfordshire  
OX25 5HD  
UK

Enquiries:

[info@everestbiotech.com](mailto:info@everestbiotech.com)

Sales:

[sales@everestbiotech.com](mailto:sales@everestbiotech.com)

Tech support:

[support@everestbiotech.com](mailto:support@everestbiotech.com)

Tel: +44 (0)1869 238326

Fax: +44 (0)1869 238327

### US Office

#### Everest Biotech c/o Abcore

405 Maple Street, Suite A106  
Ramona,  
CA 92065  
USA

Inquiries:

[info@everestbiotech.com](mailto:info@everestbiotech.com)

Sales:

[usasales@everestbiotech.com](mailto:usasales@everestbiotech.com)

Tech support:

[support@everestbiotech.com](mailto:support@everestbiotech.com)

Tel: 888-320-4628 (toll-free)

Fax: 888-841-9041

[www.everestbiotech.com](http://www.everestbiotech.com)

**Research Use Only. Not for diagnostic or therapeutic use.**

### Target Protein

**Principal Names:** RACGAP1, MgcRacGAP, Rac GTPase activating protein 1, ID-GAP, MGCRCACGAP, GTPase activating protein, HsCYK-4, HsCYK-4

**Official Symbol:** RACGAP1

**Accession Number(s):** NP\_037409.2; NP\_001306934.1; NP\_001306935.1; NP\_001306936.1

**Human GeneID(s):** [29127](#)

**Important Comments:** This antibody is expected to recognize all reported isoforms (NP\_037409.2; NP\_001306934.1; NP\_001306935.1; NP\_001306936.1). Reported variants represent identical protein: NP\_001306928.1, NP\_001119576.1, NP\_037409.2, NP\_001306931.1, NP\_001306929.1, NP\_001119575.1, NP\_001306932.1, NP\_001306930.1, NP\_001306933.1

### Immunogen

Peptide with sequence C-GRQGNFFASPLK, from the C Terminus of the protein sequence according to NP\_037409.2; NP\_001306934.1; NP\_001306935.1; NP\_001306936.1.

Please note the [peptide](#) is available for sale.

### Purification and Storage

Purified from goat serum by ammonium sulphate precipitation followed by antigen affinity chromatography using the immunizing peptide.

Supplied at 0.5 mg/ml in Tris saline, 0.02% sodium azide, pH7.3 with 0.5% bovine serum albumin.

Aliquot and store at -20°C. Minimize freezing and thawing.

### Applications Tested

**Peptide ELISA:** antibody detection limit dilution 1:32000.

**Western blot:** Approx 75kDa band observed in lysates of cell line Jurkat, and in nuclear lysates of cell lines A431 and Jurkat (calculated MW of 71.0kDa according to NP\_037409.2). Recommended concentration: 0.3-1µg/ml. Primary incubation 1 hour at room temperature. **Negative Control:** Human Pancreas lysate.

**IHC:** In paraffin embedded Human Testis, shows nuclear staining of many cells. Recommended concentration: 1µg/ml.

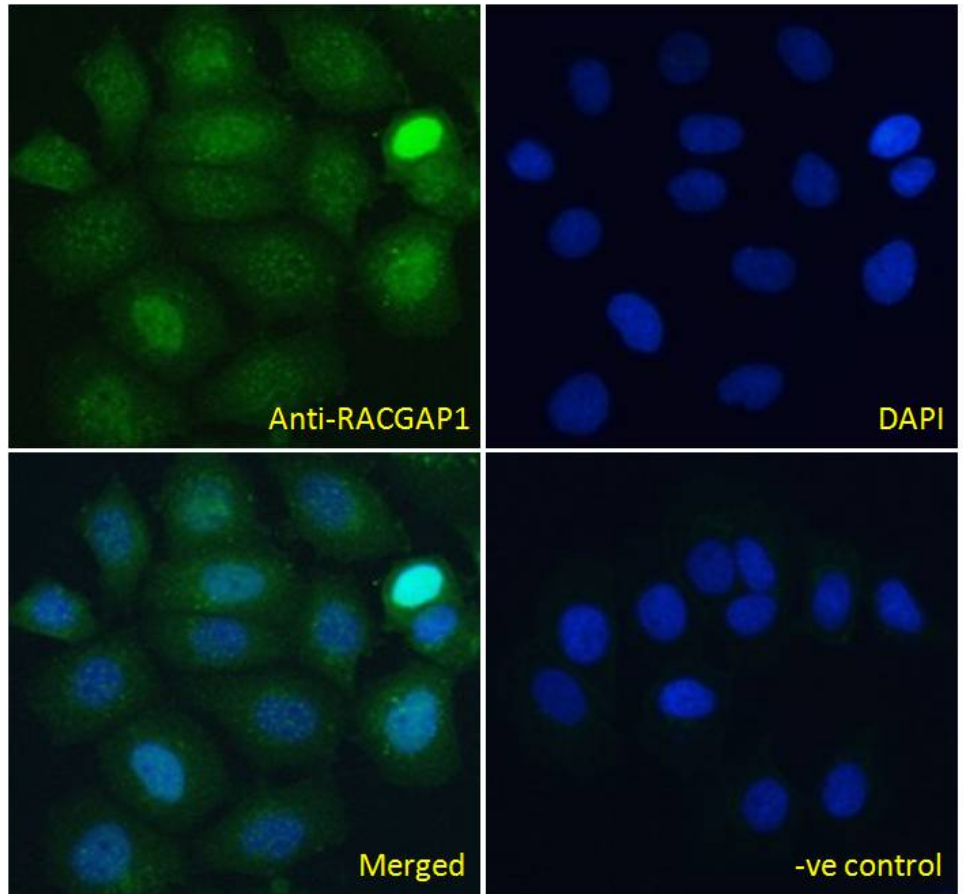
**Immunofluorescence:** Strong expression of the protein seen in the cytoplasm of MCF7 cells. Recommended concentration: 10µg/ml.

**Flow Cytometry:** Flow cytometric analysis of MCF7 cells. Recommended concentration: 10ug/ml.

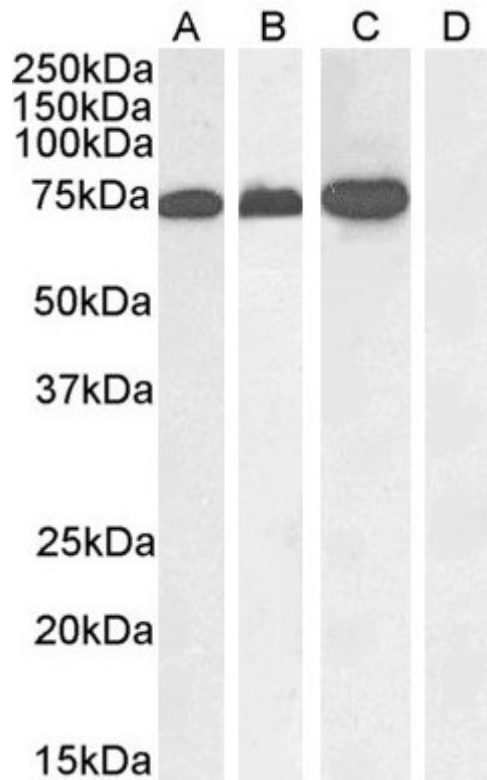
### Species Reactivity

**Tested:** Human

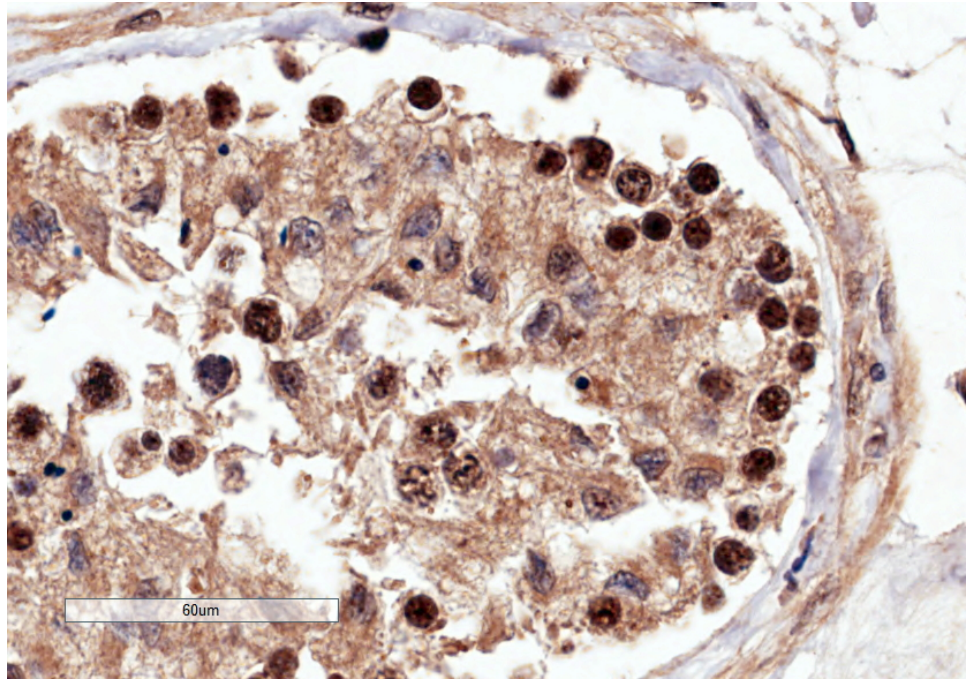
**Expected from sequence similarity:** Human, Dog, Cow



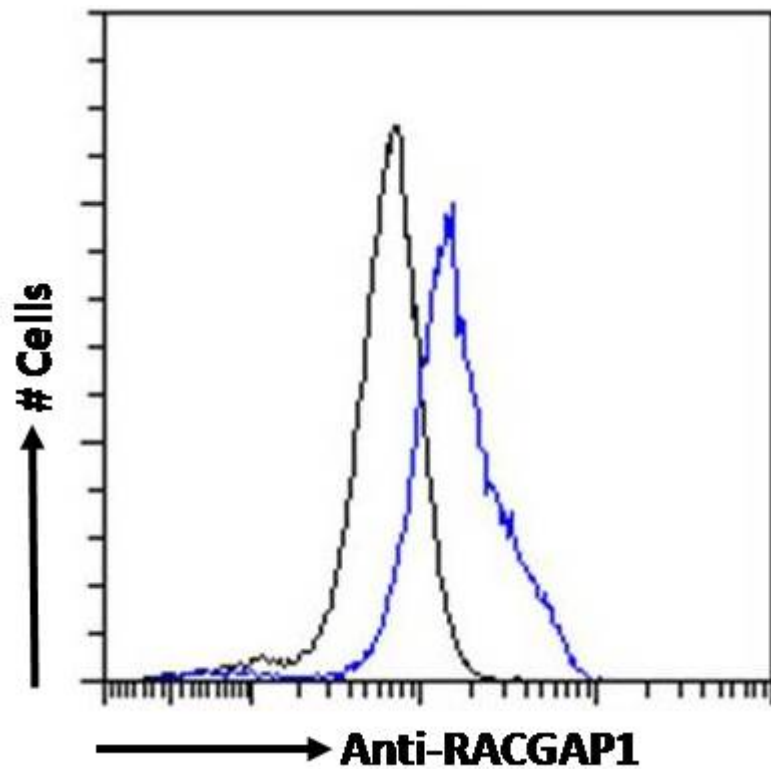
EB05315 Immunofluorescence analysis of paraformaldehyde fixed MCF7 cells, permeabilized with 0.15% Triton. Primary incubation 1hr (10ug/ml) followed by Alexa Fluor 488 secondary antibody (4ug/ml), showing nuclear staining. The nuclear stain is DAPI (blue). Negative control: Unimmunized goat IgG (10ug/ml) followed by Alexa Fluor 488 secondary antibody (4ug/ml).



EB05315 (1 $\mu$ g/ml) staining of A431 nuclear (A), Jurkat (B), Jurkat nuclear (C) and negative control Human Pancreas (D) lysate. (35 $\mu$ g protein in RIPA buffer) Detected by chemiluminescence.



EB05315 (4 $\mu$ g/ml) staining of paraffin embedded Human Testis. Microwaved antigen retrieval with Tris/EDTA buffer pH9, HRP-staining.



EB05315 Flow cytometric analysis of paraformaldehyde fixed MCF7 cells (blue line), permeabilized with 0.5% Triton. Primary incubation 1hr (10 $\mu$ g/ml) followed by Alexa Fluor 488 secondary antibody (4 $\mu$ g/ml). IgG control: Unimmunized goat IgG (black line) followed by Alexa Fluor 488 secondary antibody.