



UK Office

Everest Biotech Ltd

Cherwell Innovation Centre
77 Heyford Park
Upper Heyford
Oxfordshire
OX25 5HD
UK

Enquiries:

info@everestbiotech.com

Sales:

sales@everestbiotech.com

Tech support:

support@everestbiotech.com

Tel: +44 (0)1869 238326

Fax: +44 (0)1869 238327

US Office

Everest Biotech c/o Abcore

405 Maple Street, Suite A106
Ramona,
CA 92065
USA

Inquiries:

info@everestbiotech.com

Sales:

usasales@everestbiotech.com

Tech support:

support@everestbiotech.com

Tel: 888-320-4628 (toll-free)

Fax: 888-841-9041

www.everestbiotech.com

**Research Use Only. Not for
diagnostic or therapeutic use.**

EB05315 - Goat Anti-RACGAP1 / MgcRacGAP Antibody

Size: 100µg specific antibody in 200µl



Target Protein

Principal Names: RACGAP1, MgcRacGAP, Rac GTPase activating protein 1, ID-GAP, MGCRCACGAP, GTPase activating protein, HsCYK-4, HsCYK-4

Official Symbol: RACGAP1

Accession Number(s): NP_037409.2; NP_001306934.1; NP_001306935.1;
NP_001306936.1

Human GeneID(s): [29127](#)

Important Comments: This antibody is expected to recognize all reported isoforms (NP_037409.2; NP_001306934.1; NP_001306935.1; NP_001306936.1). Reported variants represent identical protein: NP_001306928.1, NP_001119576.1, NP_037409.2, NP_001306931.1, NP_001306929.1, NP_001119575.1, NP_001306932.1, NP_001306930.1, NP_001306933.1

Immunogen

Peptide with sequence C-GRQGNFFASPLK, from the C Terminus of the protein sequence according to NP_037409.2; NP_001306934.1; NP_001306935.1; NP_001306936.1.

Please note the [peptide](#) is available for sale.

Purification and Storage

Purified from goat serum by ammonium sulphate precipitation followed by antigen affinity chromatography using the immunizing peptide.

Supplied at 0.5 mg/ml in Tris saline, 0.02% sodium azide, pH7.3 with 0.5% bovine serum albumin.

Aliquot and store at -20°C. Minimize freezing and thawing.

Applications Tested

Peptide ELISA: antibody detection limit dilution 1:32000.

Western blot: Approx 75kDa band observed in lysates of cell line Jurkat, and in nuclear lysates of cell lines A431 and Jurkat (calculated MW of 71.0kDa according to NP_037409.2). Recommended concentration: 0.3-1µg/ml. Primary incubation 1 hour at room temperature. **Negative Control:** Human Pancreas lysate.

IHC: In paraffin embedded Human Testis, shows nuclear staining of many cells. Recommended concentration: 1µg/ml.

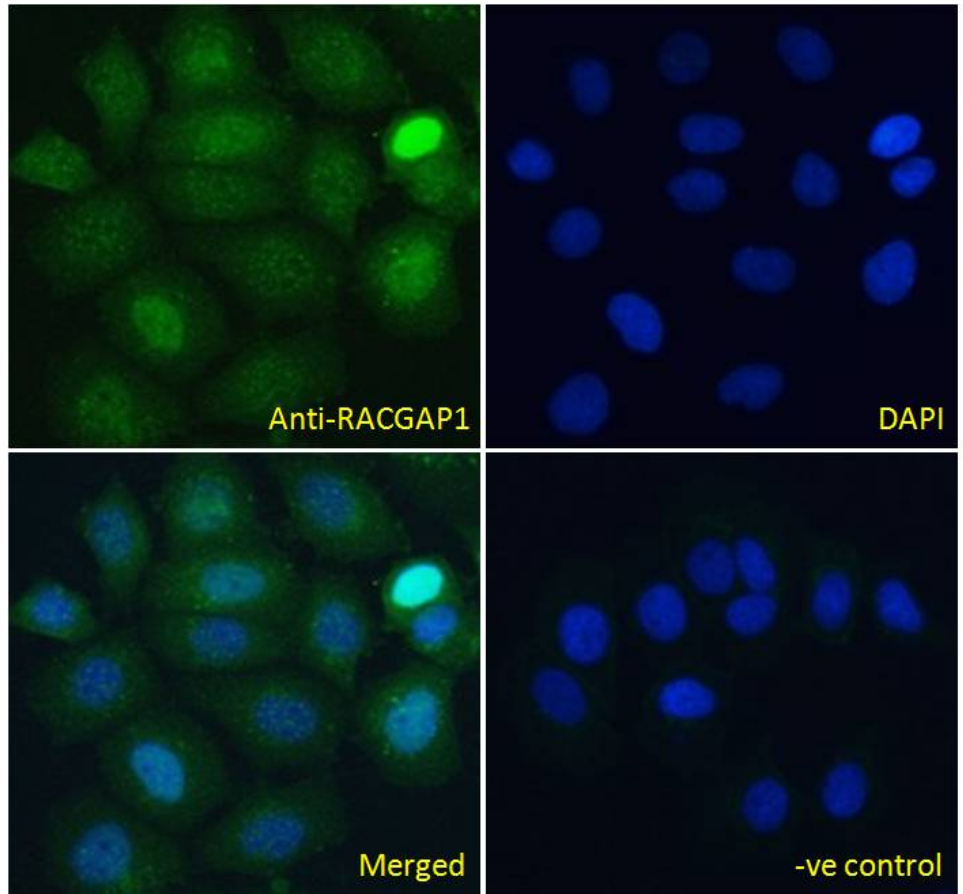
Immunofluorescence: Strong expression of the protein seen in the cytoplasm of MCF7 cells. Recommended concentration: 10µg/ml.

Flow Cytometry: Flow cytometric analysis of MCF7 cells. Recommended concentration: 10ug/ml.

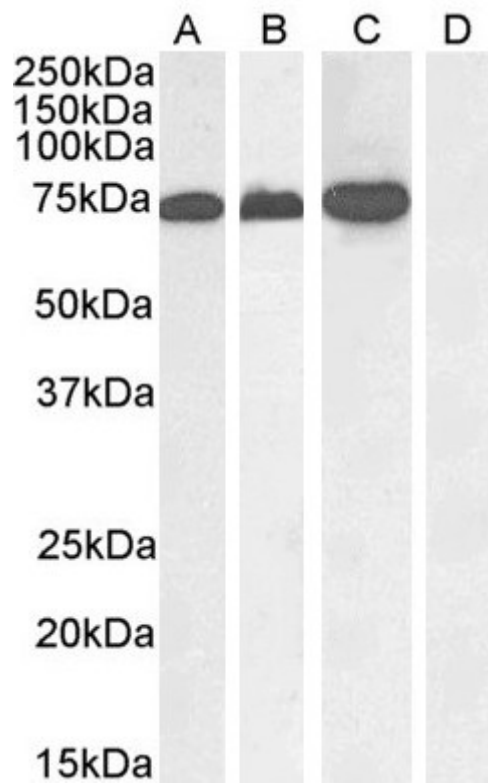
Species Reactivity

Tested: Human

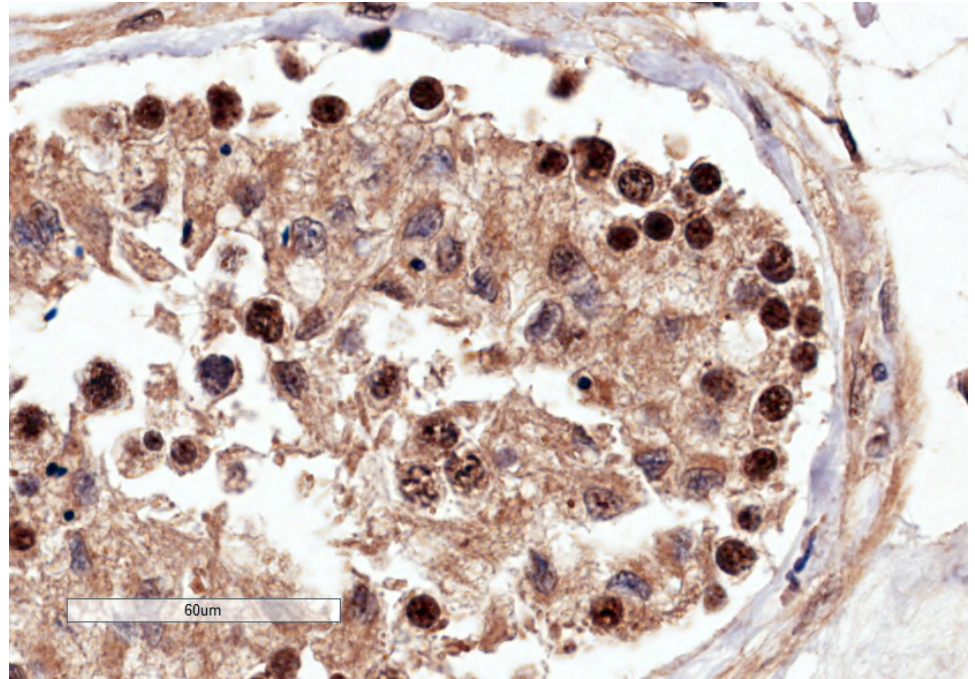
Expected from sequence similarity: Human, Dog, Cow



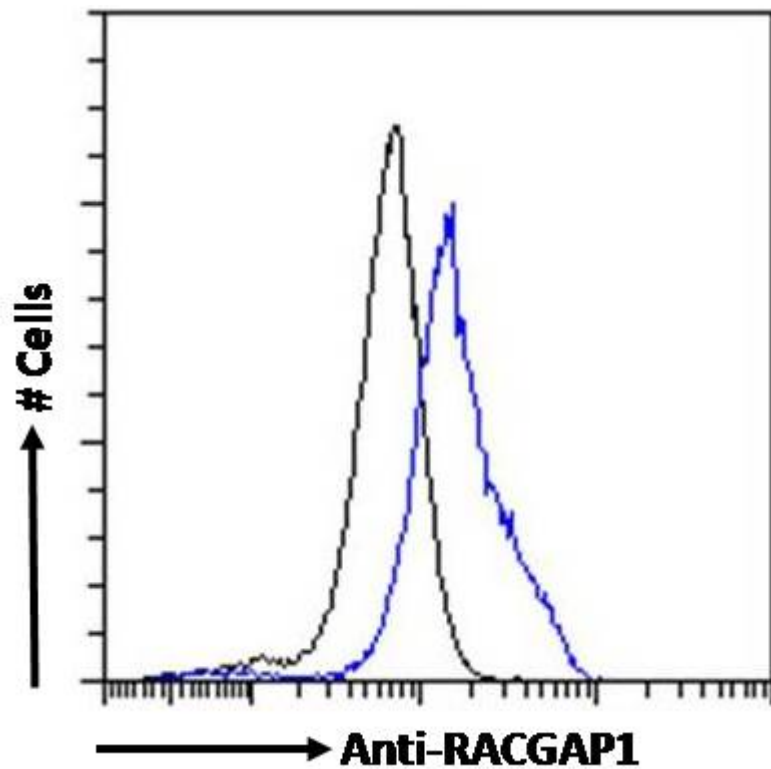
EB05315 Immunofluorescence analysis of paraformaldehyde fixed MCF7 cells, permeabilized with 0.15% Triton. Primary incubation 1hr (10ug/ml) followed by Alexa Fluor 488 secondary antibody (4ug/ml), showing nuclear staining. The nuclear stain is DAPI (blue). Negative control: Unimmunized goat IgG (10ug/ml) followed by Alexa Fluor 488 secondary antibody (4ug/ml).



EB05315 (1 μ g/ml) staining of A431 nuclear (A), Jurkat (B), Jurkat nuclear (C) and negative control Human Pancreas (D) lysate. (35 μ g protein in RIPA buffer) Detected by chemiluminescence.



EB05315 (4 μ g/ml) staining of paraffin embedded Human Testis. Microwaved antigen retrieval with Tris/EDTA buffer pH9, HRP-staining.



EB05315 Flow cytometric analysis of paraformaldehyde fixed MCF7 cells (blue line), permeabilized with 0.5% Triton. Primary incubation 1hr (10 μ g/ml) followed by Alexa Fluor 488 secondary antibody (4 μ g/ml). IgG control: Unimmunized goat IgG (black line) followed by Alexa Fluor 488 secondary antibody.