

## UK Office

### Everest Biotech Ltd

Cherwell Innovation Centre  
77 Heyford Park  
Upper Heyford  
Oxfordshire  
OX25 5HD  
UK

Enquiries:

[info@everestbiotech.com](mailto:info@everestbiotech.com)

Sales:

[sales@everestbiotech.com](mailto:sales@everestbiotech.com)

Tech support:

[support@everestbiotech.com](mailto:support@everestbiotech.com)

Tel: +44 (0)1869 238326

[www.everestbiotech.com](http://www.everestbiotech.com)

**Research Use Only. Not for  
diagnostic or therapeutic use.**

## EB05686 - Goat Anti-RAD51C Antibody

Size: 100µg specific antibody in 200µl



### Target Protein

**Principal Names:** RAD51C, RAD51 homolog C (*S. cerevisiae*), RAD51L2, yeast RAD51 homolog 3, DNA repair protein RAD51 homolog 3, MGC104277, RAD51 homolog C, RAD51 homolog C, isoform 1

**Official Symbol:** RAD51C

**Accession Number(s):** NP\_002867.1; NP\_478123.1

**Human GeneID(s):** [5889](#)

**Important Comments:** This antibody is expected to recognise all reported human isoforms.

### Immunogen

Peptide with sequence RGKTFRFEMQRDL-C, from the N Terminus of the protein sequence according to NP\_002867.1; NP\_478123.1.

Please note the [peptide](#) is available for sale.

### Purification and Storage

Purified from goat serum by ammonium sulphate precipitation followed by antigen affinity chromatography using the immunizing peptide.

Supplied at 0.5 mg/ml in Tris saline, 0.02% sodium azide, pH7.3 with 0.5% bovine serum albumin.

Aliquot and store at -20°C. Minimize freezing and thawing.

### Applications Tested

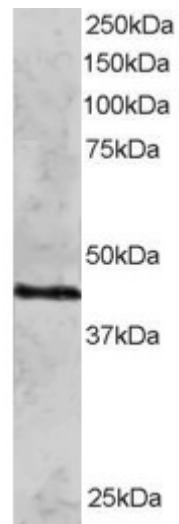
**Peptide ELISA:** antibody detection limit dilution 1:32000.

**Western blot:** Approx 45kDa band seen in HeLa lysate [Predicted MW of 41kDa according to NP\_478123]. Recommended for use at 1-3µg/ml.

### Species Reactivity

**Tested:** Human

**Expected from sequence similarity:** Human



EB05686 staining (2 $\mu$ g/ml) of HeLa lysate (RIPA buffer, 30 $\mu$ g total protein per lane). Primary incubated for 12 hour. Detected by western blot using chemiluminescence.