



## International Office

### Everest Biotech Ltd

Vector Laboratories, Inc.  
6737 Mowry Ave  
Newark, CA 94560  
United States

Customer Service:

[customerservice@vectorlabs.com](mailto:customerservice@vectorlabs.com)

Technical Service:

[technical@vectorlabs.com](mailto:technical@vectorlabs.com)

Tel: +1 (800) 227-6666

[www.everestbiotech.com](http://www.everestbiotech.com)

**Research Use Only. Not for  
diagnostic or therapeutic use.**

## EB07550 - Goat Anti-RAD9A Antibody

Size: 100µg specific antibody in 200µl



### Target Protein

**Principal Names:** RAD9A, RAD9 homolog A (S. pombe), RAD9, RAD9 (S. pombe) homolog, RAD9 homolog, RAD9 homolog (S. pombe), cell cycle checkpoint control protein

**Official Symbol:** RAD9A

**Accession Number(s):** NP\_004575.1

**Human GeneID(s):** [5883](#)

**Non-Human GeneID(s):** 19367 (mouse)

### Immunogen

Peptide with sequence C-QGPSPVLAEDSEGE, from the C Terminus of the protein sequence according to NP\_004575.1.

Please note the [peptide](#) is available for sale.

### Purification and Storage

Purified from goat serum by ammonium sulphate precipitation followed by antigen affinity chromatography using the immunizing peptide.

Supplied at 0.5 mg/ml in Tris saline, 0.02% sodium azide, pH7.3 with 0.5% bovine serum albumin.

Aliquot and store at -20°C. Minimize freezing and thawing.

### Applications Tested

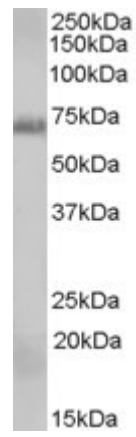
**Peptide ELISA:** antibody detection limit dilution 1:32000.

**Western blot:** Approx 70kDa band observed in lysates of cell lines A431 and Daudi (calculated MW of 42.5kDa according to NP\_004575.1). The observed molecular weight corresponds to earlier findings in literature with different antibodies (Volkmer et al, J Biol Chem. 1999 Jan 8;274(2):567-70.; PMID: 9872989). Recommended concentration: 0.3-1µg/ml.

### Species Reactivity

**Tested:** Human

**Expected from sequence similarity:** Human, Mouse, Dog



EB07550 (0.3 $\mu$ g/ml) staining of A431 cell lysate (35 $\mu$ g protein in RIPA buffer). Primary incubation was 1 hour.  
Detected by chemiluminescence.