



## UK Office

### Everest Biotech Ltd

Cherwell Innovation Centre  
77 Heyford Park  
Upper Heyford  
Oxfordshire  
OX25 5HD  
UK

Enquiries:

[info@everestbiotech.com](mailto:info@everestbiotech.com)

Sales:

[sales@everestbiotech.com](mailto:sales@everestbiotech.com)

Tech support:

[support@everestbiotech.com](mailto:support@everestbiotech.com)

Tel: +44 (0)1869 238326

Fax: +44 (0)1869 238327

## US Office

### Everest Biotech c/o Abcore

405 Maple Street, Suite A106  
Ramona,  
CA 92065  
USA

Inquiries:

[info@everestbiotech.com](mailto:info@everestbiotech.com)

Sales:

[usasales@everestbiotech.com](mailto:usasales@everestbiotech.com)

Tech support:

[support@everestbiotech.com](mailto:support@everestbiotech.com)

Tel: 888-320-4628 (toll-free)

Fax: 888-841-9041

[www.everestbiotech.com](http://www.everestbiotech.com)

**Research Use Only. Not for  
diagnostic or therapeutic use.**

## EB07550 - Goat Anti-RAD9A Antibody

Size: 100µg specific antibody in 200µl



### Target Protein

**Principal Names:** RAD9A, RAD9 homolog A (S. pombe), RAD9, RAD9 (S. pombe) homolog, RAD9 homolog, RAD9 homolog (S. pombe), cell cycle checkpoint control protein

**Official Symbol:** RAD9A

**Accession Number(s):** NP\_004575.1

**Human GeneID(s):** [5883](#)

**Non-Human GeneID(s):** 19367 (mouse)

### Immunogen

Peptide with sequence C-QGPSPVLAEDSEGE, from the C Terminus of the protein sequence according to NP\_004575.1.

Please note the [peptide](#) is available for sale.

### Purification and Storage

Purified from goat serum by ammonium sulphate precipitation followed by antigen affinity chromatography using the immunizing peptide.

Supplied at 0.5 mg/ml in Tris saline, 0.02% sodium azide, pH7.3 with 0.5% bovine serum albumin.

Aliquot and store at -20°C. Minimize freezing and thawing.

### Applications Tested

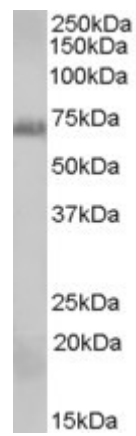
**Peptide ELISA:** antibody detection limit dilution 1:32000.

**Western blot:** Approx 70kDa band observed in lysates of cell lines A431 and Daudi (calculated MW of 42.5kDa according to NP\_004575.1). The observed molecular weight corresponds to earlier findings in literature with different antibodies (Volkmer et al, J Biol Chem. 1999 Jan 8;274(2):567-70.; PMID: 9872989). Recommended concentration: 0.3-1µg/ml.

### Species Reactivity

**Tested:** Human

**Expected from sequence similarity:** Human, Mouse, Dog



EB07550 (0.3 $\mu$ g/ml) staining of A431 cell lysate (35 $\mu$ g protein in RIPA buffer). Primary incubation was 1 hour.  
Detected by chemiluminescence.