

UK Office

Everest Biotech Ltd

Cherwell Innovation Centre
77 Heyford Park
Upper Heyford
Oxfordshire
OX25 5HD
UK

Enquiries:

info@everestbiotech.com

Sales:

sales@everestbiotech.com

Tech support:

support@everestbiotech.com

Tel: +44 (0)1869 238326

www.everestbiotech.com

**Research Use Only. Not for
diagnostic or therapeutic use.**

EB06253 - Goat Anti-RANGAP1 Antibody

Size: 100µg specific antibody in 200µl



Target Protein

Principal Names: RANGAP1, KIAA1835, Ran GTPase activating protein 1, Fug1, MGC20266, SD, OTTHUMP00000198756, OTTHUMP00000198757, segregation distorter homolog, segregation distortion

Official Symbol: RANGAP1

Accession Number(s): NP_002874.1

Human GeneID(s): [5905](#)

Non-Human GeneID(s): 19387 (mouse)

Important Comments: Please note that in mouse, there is a hypothetical protein called "similar to RANGAP1" (XP_139737.2) that is virtually identical.

Immunogen

Peptide with sequence ASEDIAKLAETLAK-C, from the N Terminus of the protein sequence according to NP_002874.1.

Please note the [peptide](#) is available for sale.

Purification and Storage

Purified from goat serum by ammonium sulphate precipitation followed by antigen affinity chromatography using the immunizing peptide.

Supplied at 0.5 mg/ml in Tris saline, 0.02% sodium azide, pH7.3 with 0.5% bovine serum albumin.

Aliquot and store at -20°C. Minimize freezing and thawing.

Applications Tested

Peptide ELISA: antibody detection limit dilution 1:32000.

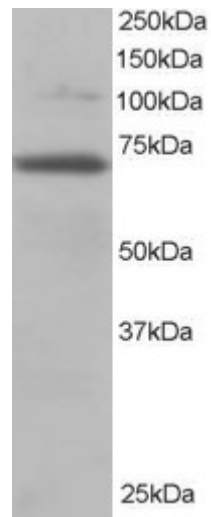
Western blot: Approx 70kDa band observed in 3T3 lysates (predicted MW of 68kDa according to NP_002874). Recommended for use at 0.1-0.5µg/ml.

IHC: In paraffin embedded Human Liver shows vesicular staining in the cytoplasm of hepatocytes. Recommended concentration: 2-4µg/ml.

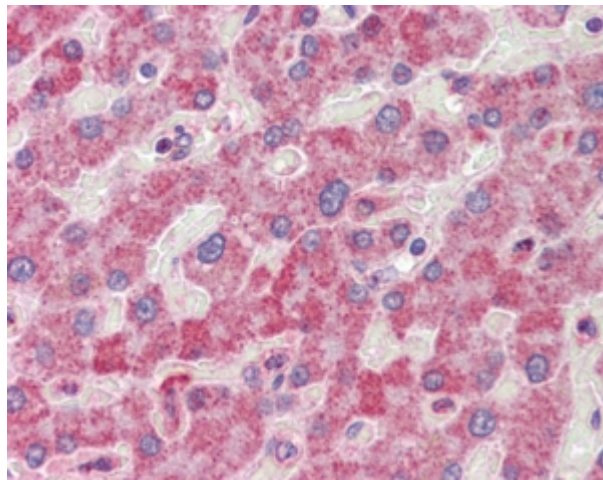
Species Reactivity

Tested: Human, Mouse

Expected from sequence similarity: Human, Mouse, Rat, Dog, Cow



EB06253 staining (0.2 μ g/ml) of 3T3 lysate (RIPA buffer, 35 μ g total protein per lane). Primary incubated for 1 hour. Detected by chemiluminescence.



EB06253 (2.5 μ g/ml) staining of paraffin embedded Human Liver. Steamed antigen retrieval with citrate buffer pH 6, AP-staining.