



## UK Office

### Everest Biotech Ltd

Cherwell Innovation Centre  
77 Heyford Park  
Upper Heyford  
Oxfordshire  
OX25 5HD  
UK

Enquiries:

[info@everestbiotech.com](mailto:info@everestbiotech.com)

Sales:

[sales@everestbiotech.com](mailto:sales@everestbiotech.com)

Tech support:

[support@everestbiotech.com](mailto:support@everestbiotech.com)

Tel: +44 (0)1869 238326

[www.everestbiotech.com](http://www.everestbiotech.com)

**Research Use Only. Not for  
diagnostic or therapeutic use.**

## EB06176 - Goat Anti-RASAL Antibody

Size: 100µg specific antibody in 200µl



### Target Protein

**Principal Names:** RASAL1, RASAL, RAS protein activator like 1 (GAP1 like), GAP1 like protein, RAS-GTPase-activating protein-like, RAS protein activator like 1

**Official Symbol:** RASAL1

**Accession Number(s):** NP\_004649.1

**Human GeneID(s):** [8437](#)

### Immunogen

Peptide with sequence C-QERGKAALGPLGP, from the C Terminus of the protein sequence according to NP\_004649.1.

Please note the [peptide](#) is available for sale.

### Purification and Storage

Purified from goat serum by ammonium sulphate precipitation followed by antigen affinity chromatography using the immunizing peptide.

Supplied at 0.5 mg/ml in Tris saline, 0.02% sodium azide, pH7.3 with 0.5% bovine serum albumin.

Aliquot and store at -20°C. Minimize freezing and thawing.

### Applications Tested

**Peptide ELISA:** antibody detection limit dilution 1:32000.

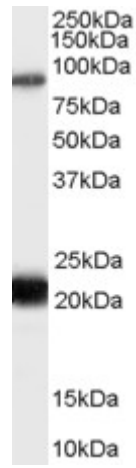
**Western blot:** Approx 90kDa band observed in Human Thyroid gland lysates (calculated MW of 90.0kDa according to NP\_004649.1). Recommended concentration: 0.3-1µg/ml.

An additional band of unknown identity was also consistently observed at 21kDa. This band was successfully blocked by incubation with the immunising peptide.

### Species Reactivity

**Tested:** Human

**Expected from sequence similarity:** Human



EB06176 (0.3 $\mu$ g/ml) staining of Human Thyroid lysate (35 $\mu$ g protein in RIPA buffer). Primary incubation was 1 hour. Detected by chemiluminescence.