



## UK Office

### Everest Biotech Ltd

Cherwell Innovation Centre  
77 Heyford Park  
Upper Heyford  
Oxfordshire  
OX25 5HD  
UK

Enquiries:

[info@everestbiotech.com](mailto:info@everestbiotech.com)

Sales:

[sales@everestbiotech.com](mailto:sales@everestbiotech.com)

Tech support:

[support@everestbiotech.com](mailto:support@everestbiotech.com)

Tel: +44 (0)1869 238326

[www.everestbiotech.com](http://www.everestbiotech.com)

**Research Use Only. Not for  
diagnostic or therapeutic use.**

## EB06422 - Goat Anti-RASIP1 / RAIN Antibody

Size: 100µg specific antibody in 200µl



### Target Protein

**Principal Names:** Ras-interacting protein 1, RAIN, FLJ20401, RASIP1, Ras interacting protein 1

**Official Symbol:** RASIP1

**Accession Number(s):** NP\_060275.2

**Human GeneID(s):** [54922](#)

### Immunogen

Peptide with sequence CANYRHGPPVATSP, from the C Terminus of the protein sequence according to NP\_060275.2.

Please note the [peptide](#) is available for sale.

### Purification and Storage

Purified from goat serum by ammonium sulphate precipitation followed by antigen affinity chromatography using the immunizing peptide.

Supplied at 0.5 mg/ml in Tris saline, 0.02% sodium azide, pH7.3 with 0.5% bovine serum albumin.

Aliquot and store at -20°C. Minimize freezing and thawing.

### Applications Tested

**Peptide ELISA:** antibody detection limit dilution 1:8000.

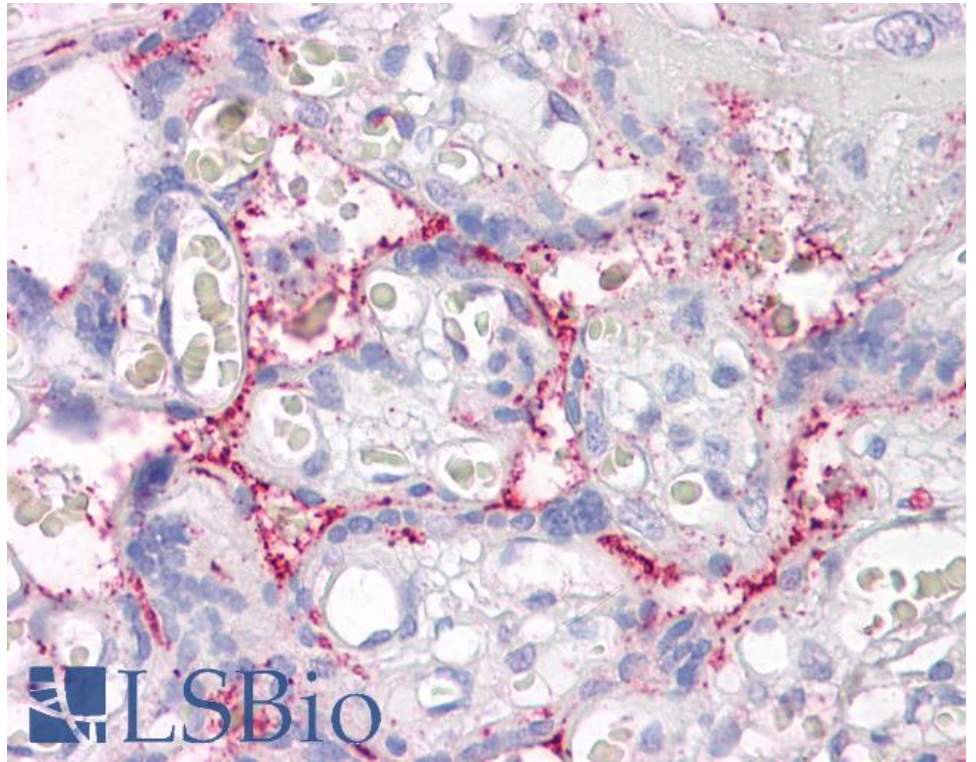
**Western blot:** Experiments gave bands at approx 95kDa, 75kDa and 45kDa in A549 Lung Carcinoma lysate after 0.3 ug/ml antibody staining. Please note that currently we cannot find an explanation in the literature for the additional bands we observe given the predicted size of 110kDa according to NP\_060275. The detected bands were successfully blocked by incubation with the immunizing peptide.

**IHC:** Paraffin embedded Human Placenta. Recommended concentration: 3.75µg/ml.

### Species Reactivity

**Tested:** Human

**Expected from sequence similarity:** Human



EB06422 (3.75µg/ml) staining of paraffin embedded Human Placenta. Steamed antigen retrieval with citrate buffer pH 6, AP-staining.