



International Office

Everest Biotech Ltd

Vector Laboratories, Inc.
6737 Mowry Ave
Newark, CA 94560
United States

Customer Service:

customerservice@vectorlabs.com

Technical Service:

technical@vectorlabs.com

Tel: +1 (800) 227-6666

www.everestbiotech.com

**Research Use Only. Not for
diagnostic or therapeutic use.**

EB08511 - Goat Anti-RASSF2 Antibody

Size: 100µg specific antibody in 200µl



Target Protein

Principal Names: RASSF2, Ras association (RalGDS/AF-6) domain family 2, DKFZp781O1747N: KIAA0168, Ras association domain family 2, rasfadin

Official Symbol: RASSF2

Accession Number(s): NP_055552.1; NP_739580.1

Human GeneID(s): [9770](#)

Important Comments: Reported variants represent identical protein: NP_055552.1; NP_739580.1.

Immunogen

Peptide with sequence PCGQDKYISKNE, from the N Terminus of the protein sequence according to NP_055552.1; NP_739580.1.

Please note the [peptide](#) is available for sale.

Purification and Storage

Purified from goat serum by ammonium sulphate precipitation followed by antigen affinity chromatography using the immunizing peptide.

Supplied at 0.5 mg/ml in Tris saline, 0.02% sodium azide, pH7.3 with 0.5% bovine serum albumin.

Aliquot and store at -20°C. Minimize freezing and thawing.

Applications Tested

Peptide ELISA: antibody detection limit dilution 1:16000.

IHC: Paraffin embedded Human Spleen, Thymus and Liver. Recommended concentration: 3.75µg/ml.

Species Reactivity

Tested: Human

Expected from sequence similarity: Human, Cow

Specific Reference

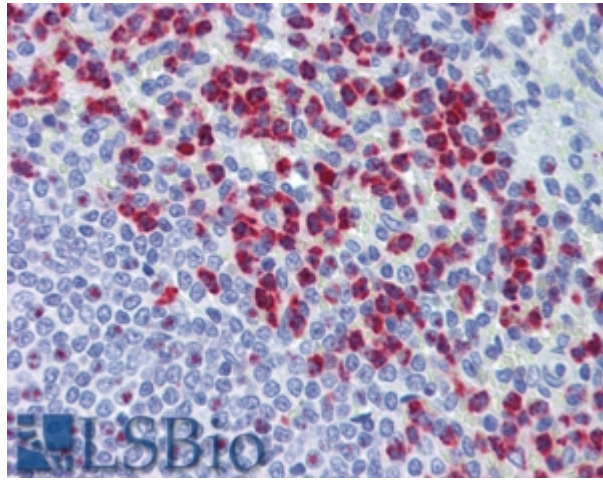
This antibody has been successfully used in IHC and IF in Human:

Perez-Janices N, Blanco-Luquin I, Torrea N, Liechtenstein T, Escors D, Cordoba A, Vicente-Garcia F, Jauregui I, De La Cruz S, Illarramendi JJ, Coca V, Berdasco M, Kochan G, Ibañez B, Lera JM, Guerrero-Setas D.

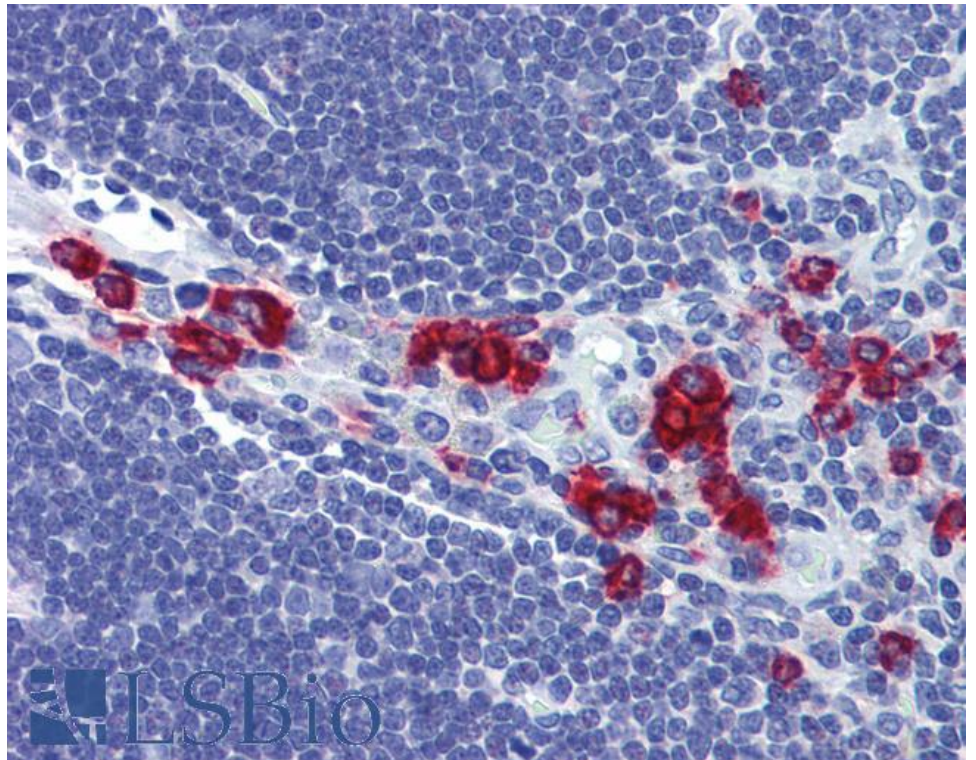
Differential involvement of RASSF2 hypermethylation in breast cancer subtypes and their prognosis.

Oncotarget. 2015 Sep 15;6(27):23944-58.

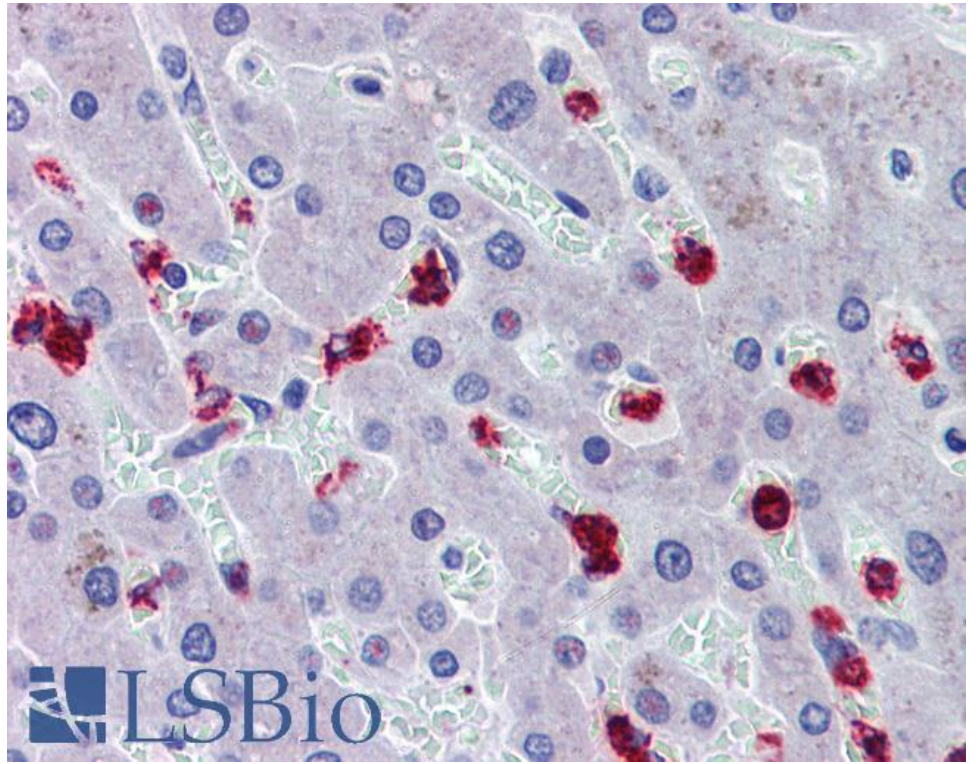
PMID: 26284587



EB08511 (3.75µg/ml) staining of paraffin embedded Human Spleen. Steamed antigen retrieval with citrate buffer pH 6, AP-staining.



EB08511 (3.75µg/ml) staining of paraffin embedded Human Thymus. Steamed antigen retrieval with citrate buffer pH 6, AP-staining.



EB08511 (3.75µg/ml) staining of paraffin embedded Human Liver. Steamed antigen retrieval with citrate buffer pH 6, AP-staining.