



UK Office

Everest Biotech Ltd

Cherwell Innovation Centre
77 Heyford Park
Upper Heyford
Oxfordshire
OX25 5HD
UK

Enquiries:

info@everestbiotech.com

Sales:

sales@everestbiotech.com

Tech support:

support@everestbiotech.com

Tel: +44 (0)1869 238326

Fax: +44 (0)1869 238327

US Office

Everest Biotech c/o Abcore

405 Maple Street, Suite A106
Ramona,
CA 92065
USA

Inquiries:

info@everestbiotech.com

Sales:

usasales@everestbiotech.com

Tech support:

support@everestbiotech.com

Tel: 888-320-4628 (toll-free)

Fax: 888-841-9041

www.everestbiotech.com

**Research Use Only. Not for
diagnostic or therapeutic use.**

EB06671 - Goat Anti-RBP1 Antibody

Size: 100µg specific antibody in 200µl



Target Protein

Principal Names: RBP1, CRBP, RBPC, CRBP1, CRABP-I, retinol binding protein 1, cellular, retinol-binding protein 1, cellular, CRBPI

Official Symbol: RBP1

Accession Number(s): NP_002890.2

Human GeneID(s): [5947](#)

Immunogen

Peptide with sequence VEGVVCKQVFKKVQ, from the C Terminus of the protein sequence according to NP_002890.2.

Please note the [peptide](#) is available for sale.

Purification and Storage

Purified from goat serum by ammonium sulphate precipitation followed by antigen affinity chromatography using the immunizing peptide.

Supplied at 0.5 mg/ml in Tris saline, 0.02% sodium azide, pH7.3 with 0.5% bovine serum albumin.

Aliquot and store at -20°C. Minimize freezing and thawing.

Applications Tested

Peptide ELISA: antibody detection limit dilution 1:4000.

Western blot: Approx 16kDa band observed in NIH3T3 and approx 17kDa in U251 cell lysates. This molecular weight is routinely observed by other sources. (calculated MW of 22.3kDa according to Human NP_002890.2 and 15.8kDa according to Mouse NP_035384.1). Recommended concentration: 0.5-3µg/ml. Primary incubation 1 hour at room temperature.

Immunofluorescence: Expression of the protein seen in the cytoplasm and nucleus of U2OS cells. Recommended concentration: 10µg/ml.

Flow Cytometry: Flow cytometric analysis of HeLa cells. Recommended concentration: 10ug/ml.

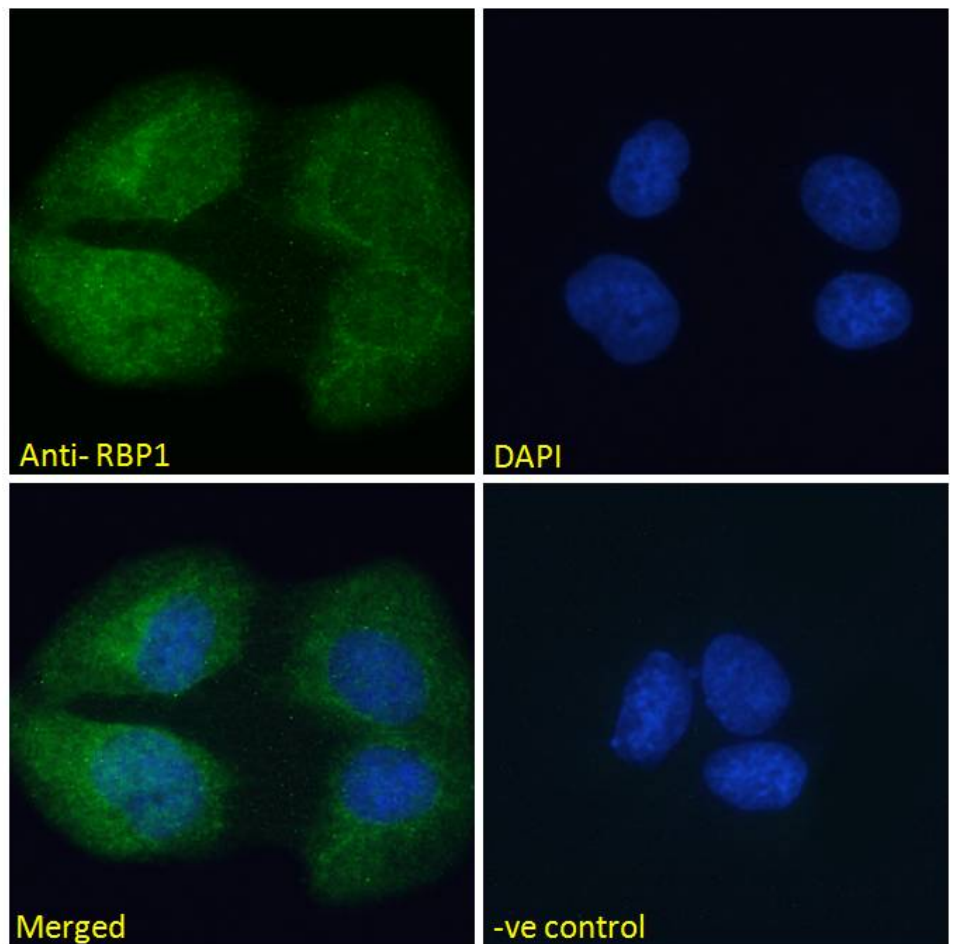
Species Reactivity

Tested: Human, Mouse

Expected from sequence similarity: Human, Mouse, Cow

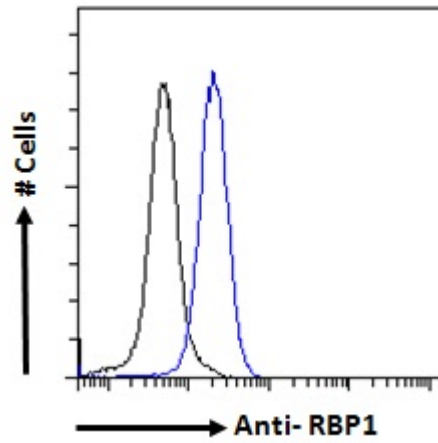


EB06671 (2 μ g/ml) staining of NIH3T3 (A) and (0.5 μ g/ml) of U251 (B) cell lysate (35 μ g protein in RIPA buffer).
Detected by chemiluminescence.



EB06671 Immunofluorescence analysis of paraformaldehyde fixed U2OS cells, permeabilized with 0.15% Triton. Primary incubation 1hr (10 μ g/ml) followed by Alexa Fluor 488 secondary antibody (2 μ g/ml), showing cytoplasmic

and nuclear staining. The nuclear stain is DAPI (blue). Negative control: Unimmunized goat IgG (10ug/ml) followed by Alexa Fluor 488 secondary antibody (2ug/ml).



EB06671 Flow cytometric analysis of paraformaldehyde fixed HeLa cells (blue line), permeabilized with 0.5% Triton. Primary incubation overnight (10ug/ml) followed by Alexa Fluor 488 secondary antibody (1ug/ml). IgG control: Unimmunized goat IgG (black line) followed by Alexa Fluor 488 secondary antibody.