



International Office

Everest Biotech Ltd

Vector Laboratories, Inc.
6737 Mowry Ave
Newark, CA 94560
United States

Customer Service:

customerservice@vectorlabs.com

Technical Service:

technical@vectorlabs.com

Tel: +1 (800) 227-6666

www.everestbiotech.com

**Research Use Only. Not for
diagnostic or therapeutic use.**

EB07571 - Goat Anti-RBP4 (Internal) Antibody

Size: 100µg specific antibody in 200µl



Target Protein

Principal Names: RBP4, retinol binding protein 4, plasma, retinol-binding protein 4, interstitial, retinol-binding protein 4, plasma

Official Symbol: RBP4

Accession Number(s): NP_006735.2

Human GeneID(s): [5950](#)

Non-Human GeneID(s): 19662 (mouse), 25703 (rat)

Immunogen

Peptide with sequence C-DTEDPAKFKMKY, from the internal region of the protein sequence according to NP_006735.2.

Please note the [peptide](#) is available for sale.

Purification and Storage

Purified from goat serum by ammonium sulphate precipitation followed by antigen affinity chromatography using the immunizing peptide.

Supplied at 0.5 mg/ml in Tris saline, 0.02% sodium azide, pH7.3 with 0.5% bovine serum albumin.

Aliquot and store at -20°C. Minimize freezing and thawing.

Applications Tested

Peptide ELISA: antibody detection limit dilution 1:2000.

Western blot: Approx 23-24kDa band observed in Human Liver lysates (calculated MW of 23.0kDa according to NP_006735.2). Recommended concentration: 0.3-1µg/ml.

Species Reactivity

Tested: Human

Expected from sequence similarity: Human, Mouse, Rat, Dog

Specific Reference

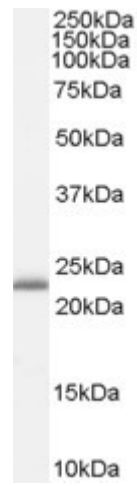
This antibody has been successfully used in Western blot on Pig:

Lee DG, Nam J, Kim SW, Kang YM, An HJ, Kim CW, Choi JS.

Proteomic analysis of reproduction proteins involved in litter size from porcine placenta

Biosci Biotechnol Biochem. 2015;79(9):1414-21.

PMID: 25921448



EB07571 (0.3 μ g/ml) staining of Human Liver lysate (35 μ g protein in RIPA buffer). Primary incubation was 1 hour.
Detected by chemiluminescence.