



## UK Office

### Everest Biotech Ltd

Cherwell Innovation Centre  
77 Heyford Park  
Upper Heyford  
Oxfordshire  
OX25 5HD  
UK

Enquiries:

[info@everestbiotech.com](mailto:info@everestbiotech.com)

Sales:

[sales@everestbiotech.com](mailto:sales@everestbiotech.com)

Tech support:

[support@everestbiotech.com](mailto:support@everestbiotech.com)

Tel: +44 (0)1869 238326

Fax: +44 (0)1869 238327

## US Office

### Everest Biotech c/o Abcore

405 Maple Street, Suite A106  
Ramona,  
CA 92065  
USA

Inquiries:

[info@everestbiotech.com](mailto:info@everestbiotech.com)

Sales:

[usasales@everestbiotech.com](mailto:usasales@everestbiotech.com)

Tech support:

[support@everestbiotech.com](mailto:support@everestbiotech.com)

Tel: 888-320-4628 (toll-free)

Fax: 888-841-9041

[www.everestbiotech.com](http://www.everestbiotech.com)

**Research Use Only. Not for  
diagnostic or therapeutic use.**

## EB07571 - Goat Anti-RBP4 (Internal) Antibody

Size: 100µg specific antibody in 200µl



### Target Protein

**Principal Names:** RBP4, retinol binding protein 4, plasma, retinol-binding protein 4, interstitial, retinol-binding protein 4, plasma

**Official Symbol:** RBP4

**Accession Number(s):** NP\_006735.2

**Human GeneID(s):** [5950](#)

**Non-Human GeneID(s):** 19662 (mouse), 25703 (rat)

### Immunogen

Peptide with sequence C-DTEDPAKFKMKY, from the internal region of the protein sequence according to NP\_006735.2.

Please note the [peptide](#) is available for sale.

### Purification and Storage

Purified from goat serum by ammonium sulphate precipitation followed by antigen affinity chromatography using the immunizing peptide.

Supplied at 0.5 mg/ml in Tris saline, 0.02% sodium azide, pH7.3 with 0.5% bovine serum albumin.

Aliquot and store at -20°C. Minimize freezing and thawing.

### Applications Tested

**Peptide ELISA:** antibody detection limit dilution 1:2000.

**Western blot:** Approx 23-24kDa band observed in Human Liver lysates (calculated MW of 23.0kDa according to NP\_006735.2). Recommended concentration: 0.3-1µg/ml.

### Species Reactivity

**Tested:** Human

**Expected from sequence similarity:** Human, Mouse, Rat, Dog

### Specific Reference

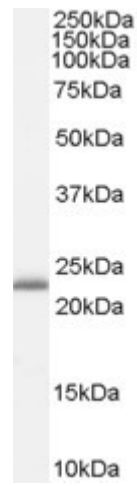
**This antibody has been successfully used in Western blot on Pig:**

Lee DG, Nam J, Kim SW, Kang YM, An HJ, Kim CW, Choi JS.

Proteomic analysis of reproduction proteins involved in litter size from porcine placenta

Biosci Biotechnol Biochem. 2015;79(9):1414-21.

PMID: 25921448



EB07571 (0.3 $\mu$ g/ml) staining of Human Liver lysate (35 $\mu$ g protein in RIPA buffer). Primary incubation was 1 hour.  
Detected by chemiluminescence.