



UK Office

Everest Biotech Ltd

Cherwell Innovation Centre
77 Heyford Park
Upper Heyford
Oxfordshire
OX25 5HD
UK

Enquiries:

info@everestbiotech.com

Sales:

sales@everestbiotech.com

Tech support:

support@everestbiotech.com

Tel: +44 (0)1869 238326

www.everestbiotech.com

**Research Use Only. Not for
diagnostic or therapeutic use.**

EB12701 - Goat Anti-RE1-silencing transcription factor Antibody

Size: 100µg specific antibody in 200µl



Target Protein

Principal Names: REST, RE1-silencing transcription factor, NRSF, XBR, RE1-silencing transcription factor variant E1a/E2/E3/E4c, RE1-silencing transcription factor variant E1a/E2/E3/E5, RE1-silencing transcription factor variant E1a/E2/E3/N3a/E4i, RE1-silencing transcription factor variant E1a/E2/E3/N3c/E4, RE1-silencing transcription factor variant E1a/E2/E4, RE1-silencing transcription factor variant E1a/E2k/E2i/E3/E4j, RE1-silencing transcription factor variant E1b/E2/E3/E5, RE1-silencing transcription factor variant E1b/E2/E3/N3b/E4i, RE1-silencing transcription factor variant E1b/E2/E3/N3c/E4, RE1-silencing transcription factor variant E1b/E2c/E2j/E3/E4, RE1-silencing transcription factor variant E1c/E2/E3/E5, RE1-silencing transcription factor variant E1c/E2g/E3/E4, neural-restrictive silencer factor, neuron restrictive silencer factor, repressor binding to the X2 box

Official Symbol: REST

Accession Number(s): NP_005603.3

Human GeneID(s): [5978](#)

Important Comments: Reported variants represent identical protein: NP_001180437.1, NP_005603.3

Immunogen

Peptide with sequence C-PETPGAEDKKGKSSK, from the internal region of the protein sequence according to NP_005603.3.

Please note the [peptide](#) is available for sale.

Purification and Storage

Purified from goat serum by ammonium sulphate precipitation followed by antigen affinity chromatography using the immunizing peptide.

Supplied at 0.5 mg/ml in Tris saline, 0.02% sodium azide, pH7.3 with 0.5% bovine serum albumin.

Aliquot and store at -20°C. Minimize freezing and thawing.

Applications Tested

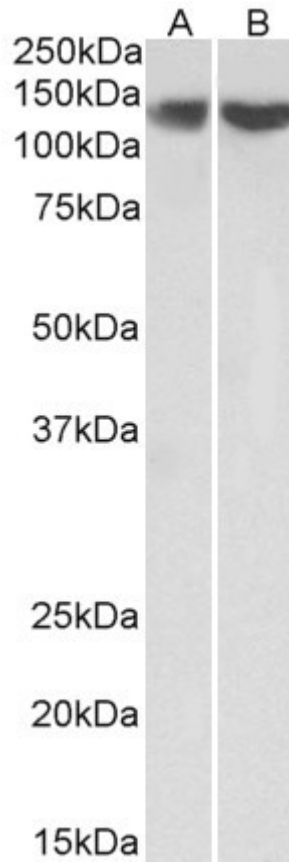
Peptide ELISA: antibody detection limit dilution 1:64000.

Western blot: Approx 140kDa band observed in nuclear lysates of cell lines HEK293 and HeLa (calculated MW of 122kDa according to NP_005603.3). This molecular weight is routinely observed by other sources. Recommended concentration: 0.3-1µg/ml.

Species Reactivity

Tested: Human

Expected from sequence similarity: Human



EB12701 (0.3 μ g/ml) staining of HEK293 (A) and HeLa (B) lysate (35 μ g protein in RIPA buffer). Primary incubation was 1 hour. Detected by chemiluminescence.