



International Office

Everest Biotech Ltd

Vector Laboratories, Inc.
6737 Mowry Ave
Newark, CA 94560
United States

Customer Service:

customerservice@vectorlabs.com

Technical Service:

technical@vectorlabs.com

Tel: +1 (800) 227-6666

www.everestbiotech.com

**Research Use Only. Not for
diagnostic or therapeutic use.**

EB09878 - Goat Anti-REL Antibody

Size: 100µg specific antibody in 200µl



Target Protein

Principal Names: C-Rel, C-Rel proto-oncogene protein, oncogene REL, avian reticuloendotheliosis, v-rel avian reticuloendotheliosis viral oncogene homolog, v-rel reticuloendotheliosis viral oncogene homolog, v-rel reticuloendotheliosis viral oncogene homolog (avian), REL

Official Symbol: REL

Accession Number(s): NP_002899.1

Human GeneID(s): [5966](#)

Immunogen

Peptide with sequence NDLNASNACIYN, from the internal region of the protein sequence according to NP_002899.1.

Please note the [peptide](#) is available for sale.

Purification and Storage

Purified from goat serum by ammonium sulphate precipitation followed by antigen affinity chromatography using the immunizing peptide.

Supplied at 0.5 mg/ml in Tris saline, 0.02% sodium azide, pH7.3 with 0.5% bovine serum albumin.

Aliquot and store at -20°C. Minimize freezing and thawing.

Applications Tested

Peptide ELISA: antibody detection limit dilution 1:16000.

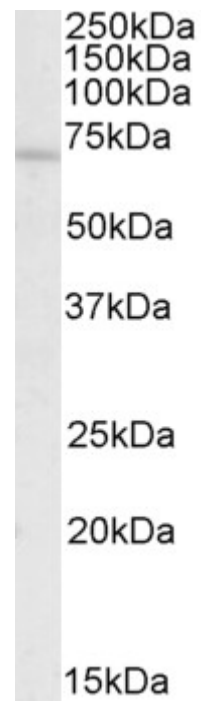
Western blot: Approx 70kDa band observed in Human Spleen and Human Peripheral Blood Mononucleocytes lysates (calculated MW of 68.5kDa according to NP_002899.1). Recommended concentration: 0.5-2µg/ml. Primary incubation was 1 hour.

IHC: Paraffin embedded Human Thymus. Recommended concentration: 2.5µg/ml.

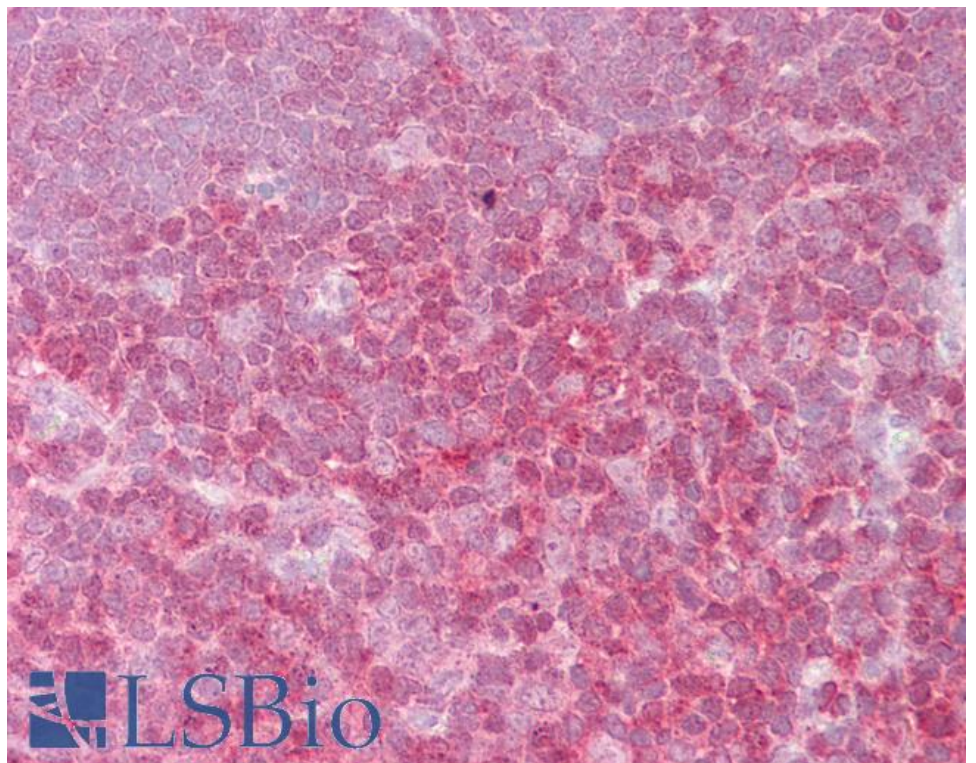
Species Reactivity

Tested: Human

Expected from sequence similarity: Human



EB09878 (0.5µg/ml) staining of Human Spleen lysate (35µg protein in RIPA buffer). Detected by chemiluminescence.



EB09879 (2.5µg/ml) staining of paraffin embedded Human Thymus. Steamed antigen retrieval with citrate buffer pH 6, AP-staining.