



## UK Office

### Everest Biotech Ltd

Cherwell Innovation Centre  
77 Heyford Park  
Upper Heyford  
Oxfordshire  
OX25 5HD  
UK

Enquiries:

[info@everestbiotech.com](mailto:info@everestbiotech.com)

Sales:

[sales@everestbiotech.com](mailto:sales@everestbiotech.com)

Tech support:

[support@everestbiotech.com](mailto:support@everestbiotech.com)

Tel: +44 (0)1869 238326

[www.everestbiotech.com](http://www.everestbiotech.com)

**Research Use Only. Not for  
diagnostic or therapeutic use.**

## EB06747 - Goat Anti-Renalase (aa 224 to 233) Antibody

Size: 100µg specific antibody in 200µl



### Target Protein

**Principal Names:** renalase, C10orf59, chromosome 10 open reading frame 59, HGNC:25641, FLJ11218, hypothetical protein LOC55328, RNLS, renalase, FAD-dependent amine oxidase, RENALASE

**Official Symbol:** RNLS

**Accession Number(s):** NP\_001026879.2; NP\_060833.1

**Human GeneID(s):** [55328](#)

**Important Comments:** This antibody is expected to recognise both reported isoforms (NP\_001026879.2 and NP\_060833.1).

### Immunogen

Peptide with sequence C-VSIDNKKRNI, from the internal region of the protein sequence according to NP\_001026879.2; NP\_060833.1.

Please note the [peptide](#) is available for sale.

### Purification and Storage

Purified from goat serum by ammonium sulphate precipitation followed by antigen affinity chromatography using the immunizing peptide.

Supplied at 0.5 mg/ml in Tris saline, 0.02% sodium azide, pH7.3 with 0.5% bovine serum albumin.

Aliquot and store at -20°C. Minimize freezing and thawing.

### Applications Tested

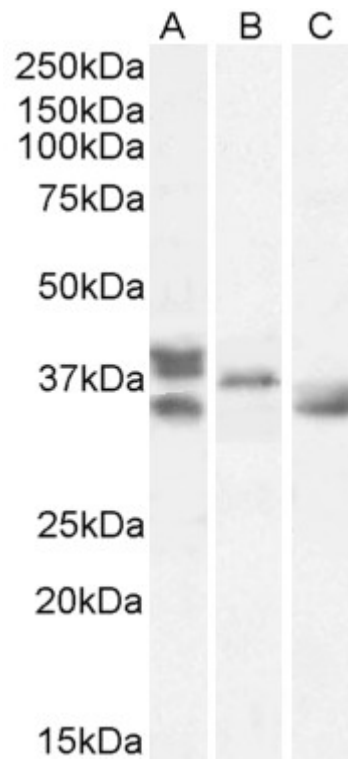
**Peptide ELISA:** antibody detection limit dilution 1:128000.

**Western blot:** Approx 38+35kDa bands observed in Human Heart lysates, 37kDa band observed in Mouse Heart lysates and approx 35kDa in Rat Heart lysates (calculated MW of 37.8 and 34.9 according to Human NP\_001026879.2 and NP\_060833.1 resp, of 33.3kDa according to Mouse NP\_001161290.1 and of 35.0kDa according to Rat NP\_001014189.1). Recommended concentration: 1-3µg/ml. Primary incubation was 1 hour.

### Species Reactivity

**Tested:** Human, Mouse, Rat

**Expected from sequence similarity:** Human, Mouse, Rat, Dog, Cow



EB06747 (1 $\mu$ g/ml) staining of Human Heart (A), Mouse Heart (B), Rat Heart (C) lysates (35 $\mu$ g protein in RIPA buffer). Detected by chemiluminescence.