

UK Office

Everest Biotech Ltd

Cherwell Innovation Centre
77 Heyford Park
Upper Heyford
Oxfordshire
OX25 5HD
UK

Enquiries:

info@everestbiotech.com

Sales:

sales@everestbiotech.com

Tech support:

support@everestbiotech.com

Tel: +44 (0)1869 238326

www.everestbiotech.com

**Research Use Only. Not for
diagnostic or therapeutic use.**

EB07861 - Goat Anti-RER1 Antibody

Size: 100µg specific antibody in 200µl



Target Protein

Principal Names: RER1, RER1 retention in endoplasmic reticulum 1 homolog (S. cerevisiae), RP4-740C4.2, RER1 homolog, RER1 retention in endoplasmic reticulum 1

Official Symbol: RER1

Accession Number(s): NP_008964.3

Human GeneID(s): [11079](#)

Non-Human GeneID(s): 67830 (mouse)

Immunogen

Peptide with sequence C-HGKRRYRGKEDAGK, from the C Terminus of the protein sequence according to NP_008964.3.

Please note the [peptide](#) is available for sale.

Purification and Storage

Purified from goat serum by ammonium sulphate precipitation followed by antigen affinity chromatography using the immunizing peptide.

Supplied at 0.5 mg/ml in Tris saline, 0.02% sodium azide, pH7.3 with 0.5% bovine serum albumin.

Aliquot and store at -20°C. Minimize freezing and thawing.

Applications Tested

Peptide ELISA: antibody detection limit dilution 1:128000.

Western blot: Preliminary experiments gave an approx 45kDa band in Human Brain lysates after 0.01µg/ml antibody staining. Please note that currently we cannot find an explanation in the literature for the band we observe given the calculated size of 22.9kDa according to NP_008964.3. The 45kDa band was successfully blocked by incubation with the immunizing peptide.

IHC: Paraffin embedded Human Uterus. Recommended concentration: 3.75µg/ml.

Species Reactivity

Tested: Human

Expected from sequence similarity: Human

Specific Reference

This antibody has been successfully used in IHC on Human:

Kerstin TS Wirz, Pedro Haas, Koen Bossers, Dick F Swaab and Joost Verhaagen.

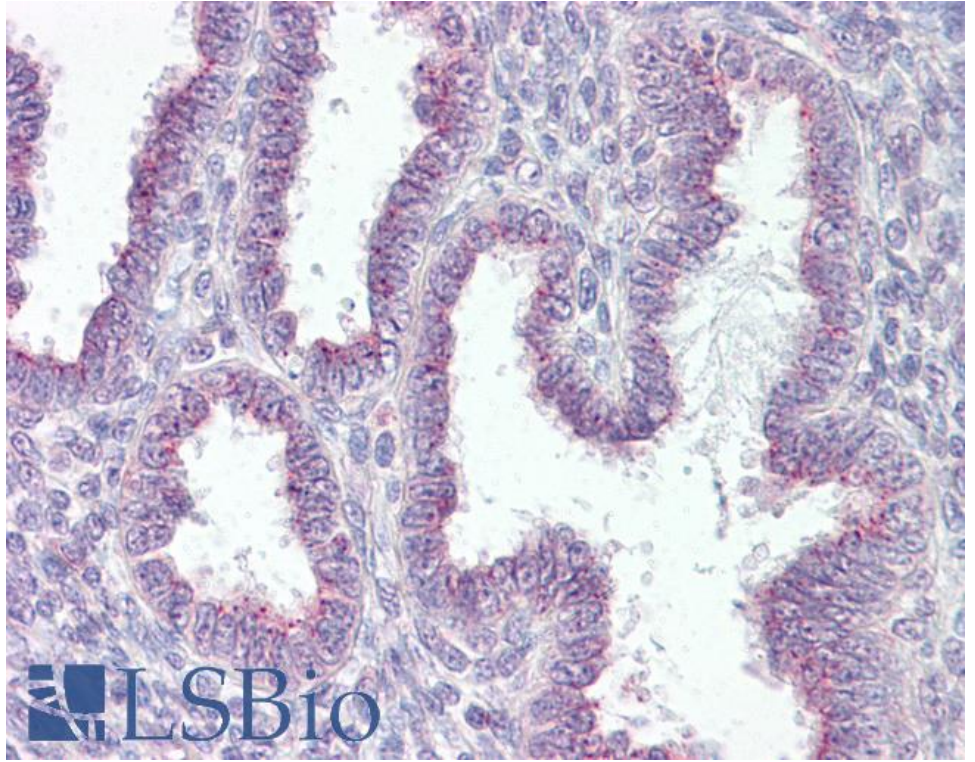
A comparison of selected mRNA and protein abundances of target genes involved in Alzheimer's disease development

Thesis 2013: Molecular changes during the development of Alzheimer's disease.

Netherlands Institute for Neuroscience,

http://www.tipharma.com/fileadmin/user_upload/Theses/PDF/Kerstin_Wirz_T5-207.pdf#page=111

PMID: 0



EB07861 (3.75µg/ml) staining of paraffin embedded Human Uterus. Steamed antigen retrieval with citrate buffer pH 6, AP-staining.