

## International Office

### Everest Biotech Ltd

Vector Laboratories, Inc.  
6737 Mowry Ave  
Newark, CA 94560  
United States

Customer Service:

[customerservice@vectorlabs.com](mailto:customerservice@vectorlabs.com)

Technical Service:

[technical@vectorlabs.com](mailto:technical@vectorlabs.com)

Tel: +1 (800) 227-6666

[www.everestbiotech.com](http://www.everestbiotech.com)

**Research Use Only. Not for  
diagnostic or therapeutic use.**

## EB09512 - Goat Anti-Restin / CLIP1 Antibody

Size: 100µg specific antibody in 200µl



### Target Protein

**Principal Names:** CLIP1, CAP-GLY domain containing linker protein 1, CLIP, CLIP-170, CLIP170, CYLN1, MGC131604, RSN, Reed-Steinberg cell-expressed intermediate filament-associated protein, cytoplasmic linker 1, restin, restin (Reed-Steinberg cell-expressed intermediate filament-associated protein)

**Official Symbol:** CLIP1

**Accession Number(s):** NP\_002947.1; NP\_937883.1; NP\_001234926.1; NP\_001376220.1

**Human GeneID(s):** [6249](#)

**Non-Human GeneID(s):** 56430 (mouse), 65201 (rat)

**Important Comments:** This antibody is expected to recognize both reported isoforms (NP\_002947.1; NP\_937883.1).

### Immunogen

Peptide with sequence C-PHSTHHGSRGEERP, from the C Terminus of the protein sequence according to NP\_002947.1; NP\_937883.1; NP\_001234926.1; NP\_001376220.1.

Please note the [peptide](#) is available for sale.

### Purification and Storage

Purified from goat serum by ammonium sulphate precipitation followed by antigen affinity chromatography using the immunizing peptide.

Supplied at 0.5 mg/ml in Tris saline, 0.02% sodium azide, pH7.3 with 0.5% bovine serum albumin.

Aliquot and store at -20°C. Minimize freezing and thawing.

### Applications Tested

**Peptide ELISA:** antibody detection limit dilution 1:8000.

**Western blot:** Approx. 150kDa band observed in lysates of cell lines HEK293, A549, HepG2 and HeLa (calculated MW of 161kDa according to NP\_002947.1). Recommended concentration: 0.1-1µg/ml. Primary incubation 1 hour at room temperature.

**IHC:** Paraffin embedded Human Thyroid and Prostate. Recommended concentration: 2.5µg/ml.

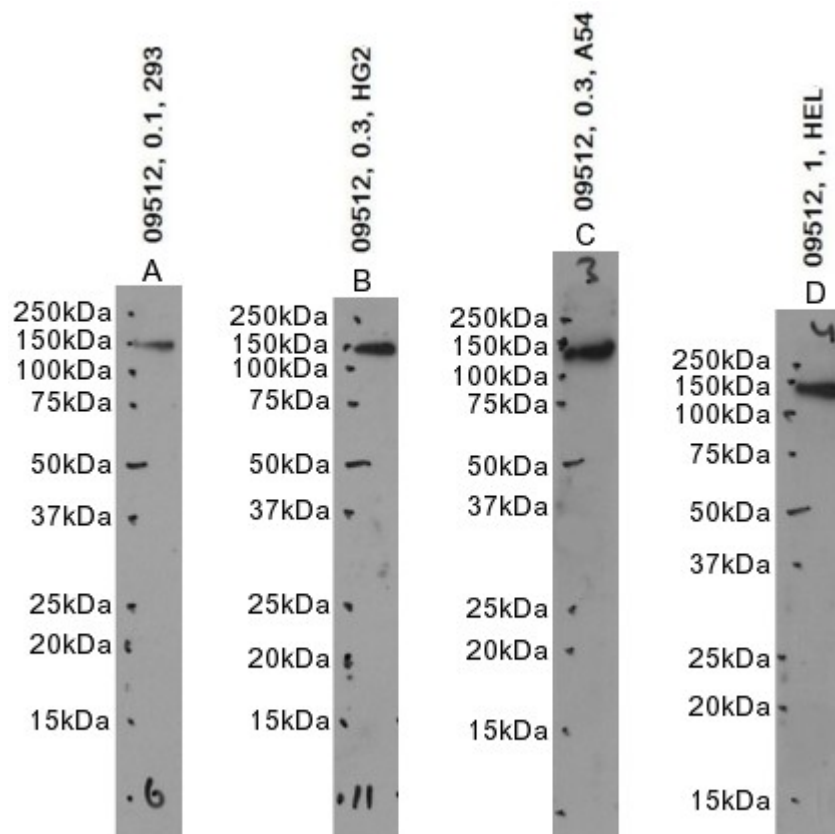
**Immunofluorescence:** Strong expression of the protein seen in A431 and A549 cells. Recommended concentration: 10µg/ml.

**Flow Cytometry:** Flow cytometric analysis of A549 cells. Recommended concentration: 10ug/ml.

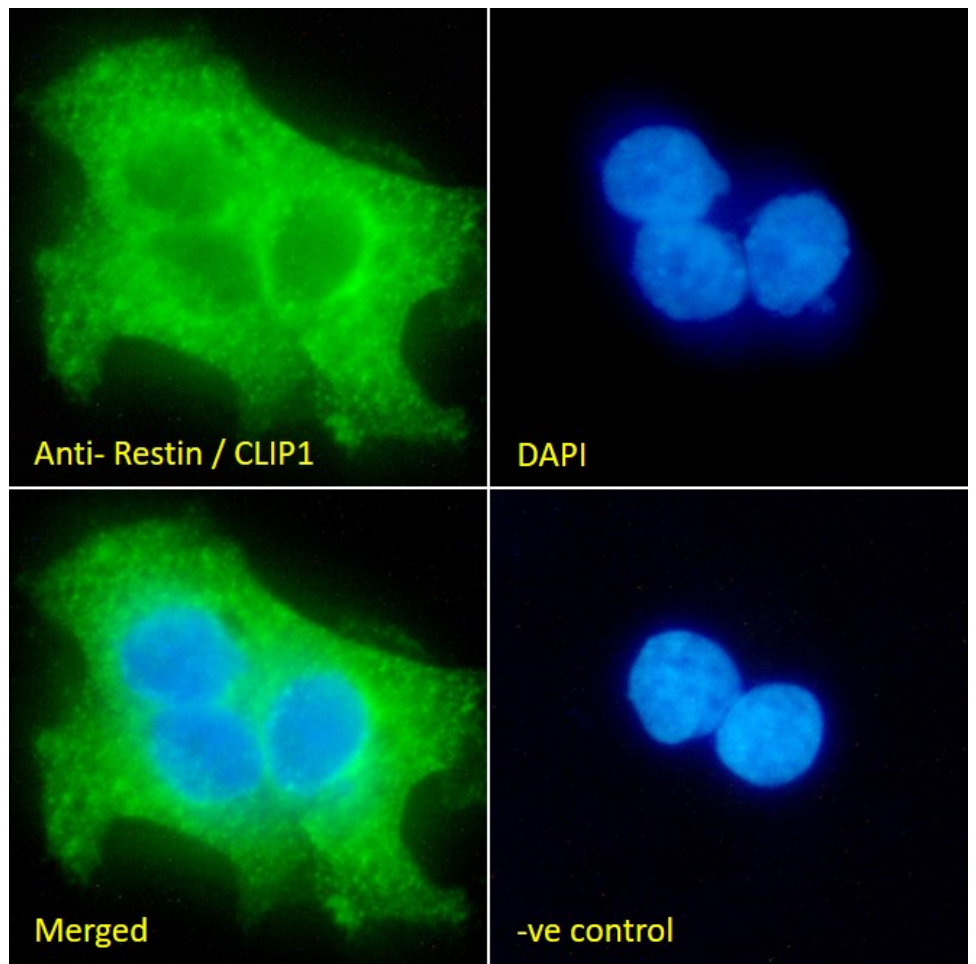
### Species Reactivity

**Tested:** Human

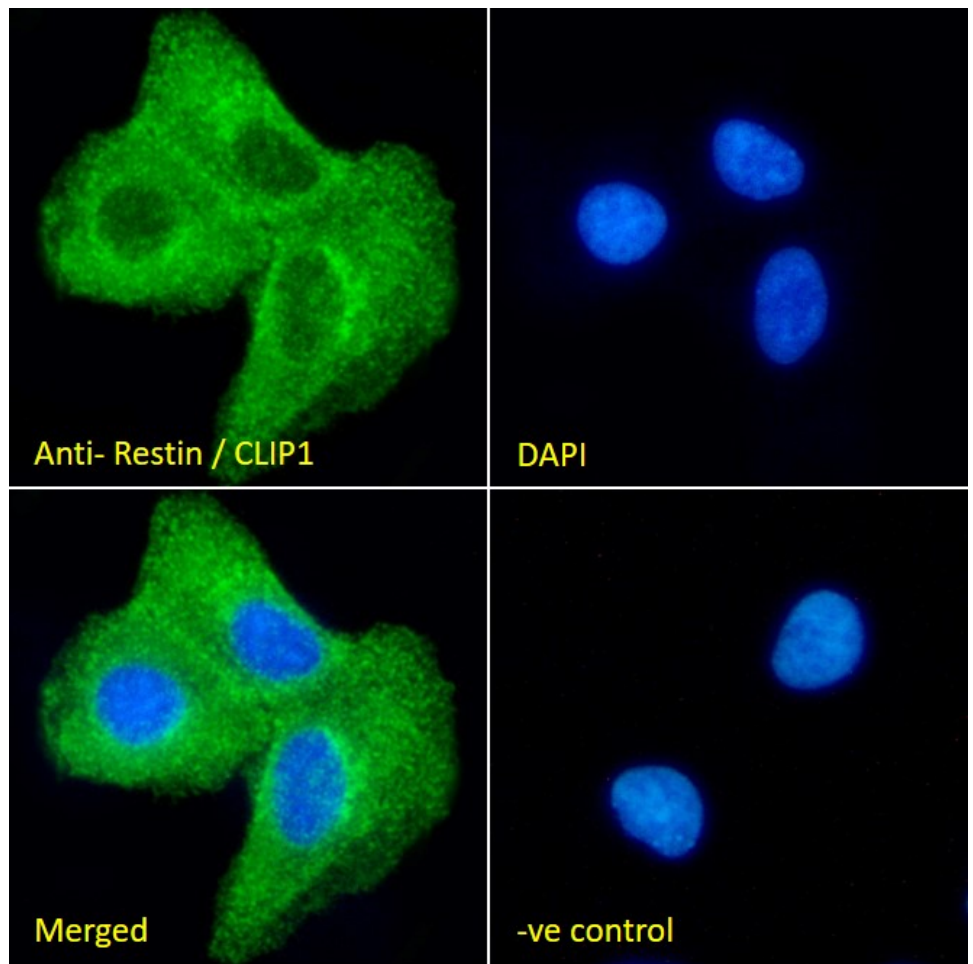
**Expected from sequence similarity:** Human



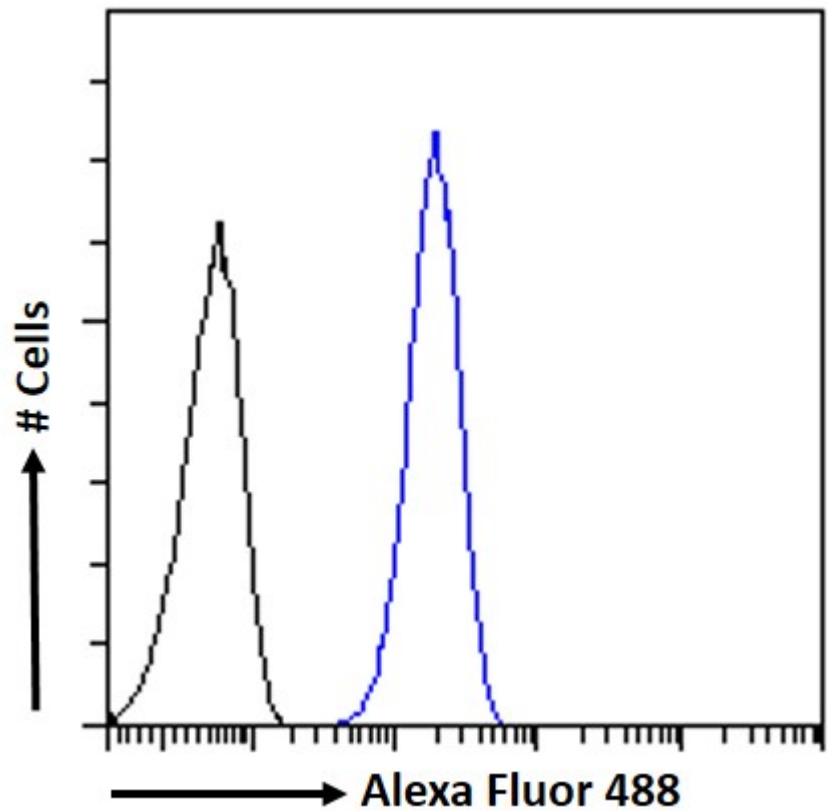
EB09512 optimised QC. Primary incubation 1 hour at room temperature.  
Image A: HEK293 cell lysate at primary Ab concentration 0.1ug/ml, Images B, C: HepG2, A549 cell lysate at primary Ab concentration 0.3ug/ml, and Image D: HeLa cell lysate at primary Ab concentration 1ug/ml. (Loaded 35µg protein in RIPA buffer, per lane).  
Detected by chemiluminescence.



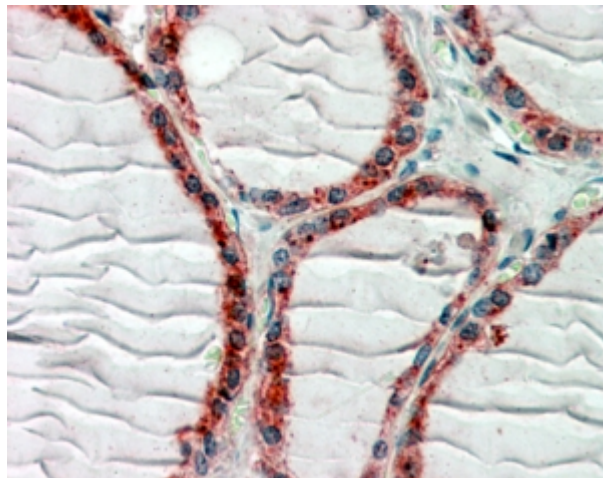
EB09512 Immunofluorescence analysis of paraformaldehyde fixed A431 cells, permeabilized with 0.15% Triton. Primary incubation 1hr (10ug/ml) followed by Alexa Fluor 488 secondary antibody (2ug/ml), showing cytoplasmic staining. The nuclear stain is DAPI (blue). Negative control: Unimmunized goat IgG (10ug/ml) followed by Alexa Fluor 488 secondary antibody (2ug/ml).



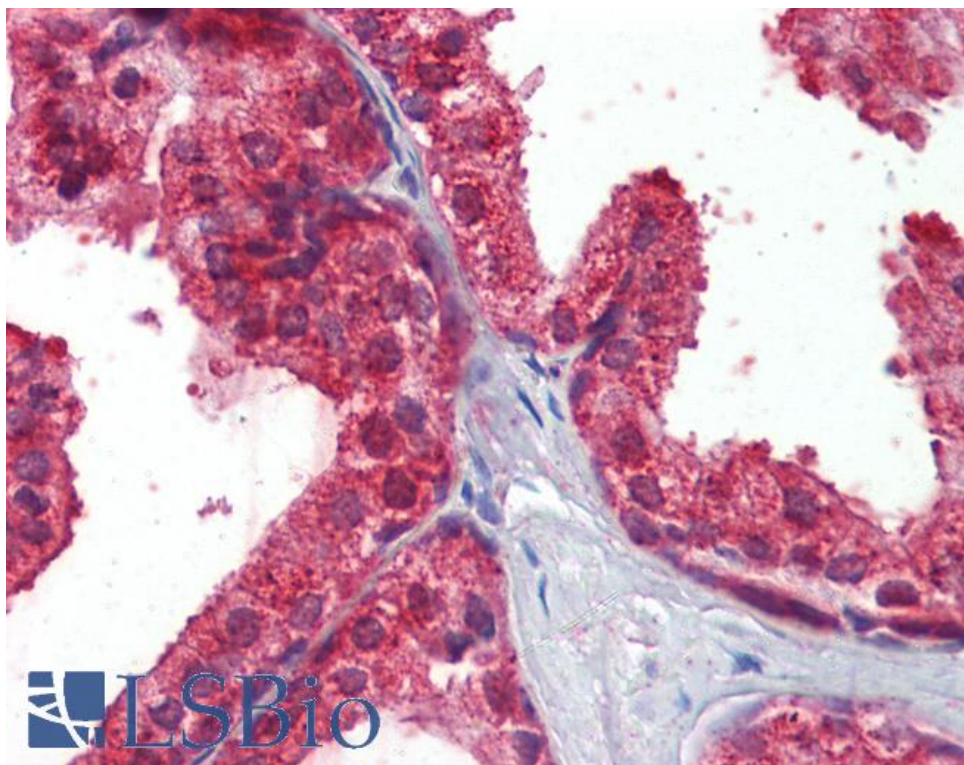
EB09512 Immunofluorescence analysis of paraformaldehyde fixed A549 cells, permeabilized with 0.15% Triton. Primary incubation 1hr (10ug/ml) followed by Alexa Fluor 488 secondary antibody (2ug/ml), showing cytoplasmic staining. The nuclear stain is DAPI (blue). Negative control: Unimmunized goat IgG (10ug/ml) followed by Alexa Fluor 488 secondary antibody (2ug/ml).



EB09512 Flow cytometric analysis of paraformaldehyde fixed A549 cells (blue line), permeabilized with 0.5% Triton. Primary incubation 1hr (10ug/ml) followed by Alexa Fluor 488 secondary antibody (1ug/ml). IgG control: Unimmunized goat IgG (black line) followed by Alexa Fluor 488 secondary antibody.



EB09512 (2.5µg/ml) staining of paraffin embedded Human Thyroid Gland. Steamed antigen retrieval with citrate buffer pH 6, AP-staining.



EB09512 (2.5µg/ml) staining of paraffin embedded Human Prostate. Steamed antigen retrieval with citrate buffer Ph 6, AP-staining.