



International Office

Everest Biotech Ltd

Vector Laboratories, Inc.
6737 Mowry Ave
Newark, CA 94560
United States

Customer Service:

customerservice@vectorlabs.com

Technical Service:

technical@vectorlabs.com

Tel: +1 (800) 227-6666

www.everestbiotech.com

**Research Use Only. Not for
diagnostic or therapeutic use.**

EB05989 - Goat Anti-REV1L Antibody

Size: 100µg specific antibody in 200µl



Target Protein

Principal Names: REV1, REV1L, REV1-like (yeast), REV1, REV1 protein, REV1 (yeast homolog)- like, REV1 homolog (S. cerevisiae), FLJ21523, MGC163283, MGC26225, REV1- like

Official Symbol: REV1

Accession Number(s): NP_057400.1; NP_001032961.1

Human GeneID(s): [51455](#)

Non-Human GeneID(s): 56210 (mouse)

Important Comments: This antibody is expected to recognise both reported isoforms.

Immunogen

Peptide with sequence C-VLQQTYGSTLKVT, from the C Terminus of the protein sequence according to NP_057400.1; NP_001032961.1.

Please note the [peptide](#) is available for sale.

Purification and Storage

Purified from goat serum by ammonium sulphate precipitation followed by antigen affinity chromatography using the immunizing peptide.

Supplied at 0.5 mg/ml in Tris saline, 0.02% sodium azide, pH7.3 with 0.5% bovine serum albumin.

Aliquot and store at -20°C. Minimize freezing and thawing.

Applications Tested

Peptide ELISA: antibody detection limit dilution 1:8000.

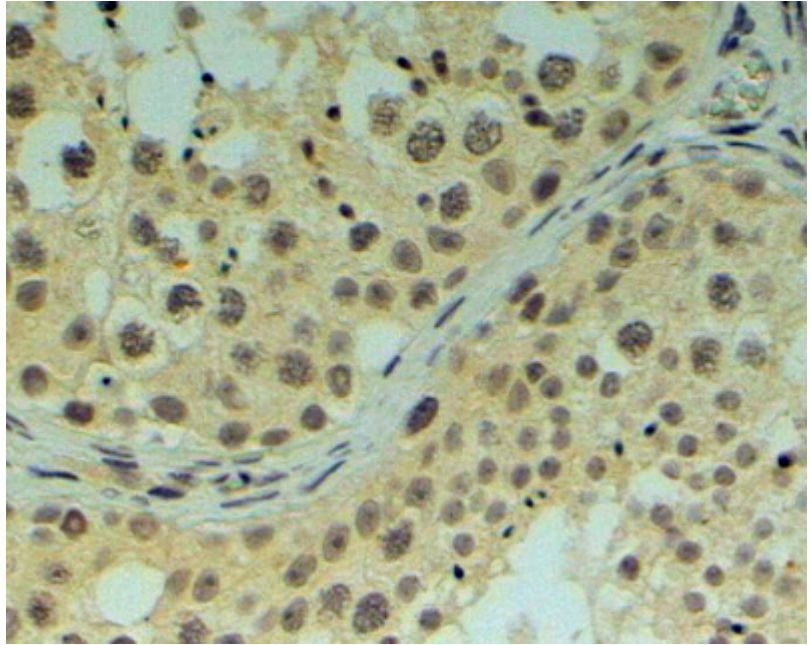
Western blot: No signal obtained yet but low background observed in MOLT-4 lysates at up to 1.5µg/ml. We would appreciate any feedback from people in the field - have any results been reported with other antibodies/lysates?

IHC: In paraffin embedded Human Testis shows nuclear staining in spermatogonia and spermatocytes. Recommended concentration, 4-6µg/ml.

Species Reactivity

Tested: Human

Expected from sequence similarity: Human, Mouse, Rat, Dog, Cow



EB05989 (4µg/ml) staining of paraffin embedded Human Testis. Steamed antigen retrieval with Tris/EDTA buffer pH 9, HRP-staining.