

## UK Office

### Everest Biotech Ltd

Cherwell Innovation Centre  
77 Heyford Park  
Upper Heyford  
Oxfordshire  
OX25 5HD  
UK

Enquiries:

[info@everestbiotech.com](mailto:info@everestbiotech.com)

Sales:

[sales@everestbiotech.com](mailto:sales@everestbiotech.com)

Tech support:

[support@everestbiotech.com](mailto:support@everestbiotech.com)

Tel: +44 (0)1869 238326

[www.everestbiotech.com](http://www.everestbiotech.com)

**Research Use Only. Not for  
diagnostic or therapeutic use.**

## EB08104 - Goat Anti-Ribosomal protein L22 Antibody

Size: 100µg specific antibody in 200µl



### Target Protein

**Principal Names:** RPL22, ribosomal protein L22, EAP, HBP15, HBP15/L22, 60S ribosomal protein L22, EBER-associated protein, Epstein-Barr virus small RNA-associated protein, Epstein-Barr-encoded RNA-associated protein, heparin-binding protein 15, heparin-binding protein HBp15

**Official Symbol:** RPL22

**Accession Number(s):** NP\_000974.1

**Human GeneID(s):** [6146](#)

**Non-Human GeneID(s):** 19934 (mouse), 81768 (rat)

### Immunogen

Peptide with sequence C-SKESYELRYFQINQ, from the C Terminus of the protein sequence according to NP\_000974.1.

Please note the [peptide](#) is available for sale.

### Purification and Storage

Purified from goat serum by ammonium sulphate precipitation followed by antigen affinity chromatography using the immunizing peptide.

Supplied at 0.5 mg/ml in Tris saline, 0.02% sodium azide, pH7.3 with 0.5% bovine serum albumin.

Aliquot and store at -20°C. Minimize freezing and thawing.

### Applications Tested

**Peptide ELISA:** antibody detection limit dilution 1:16000.

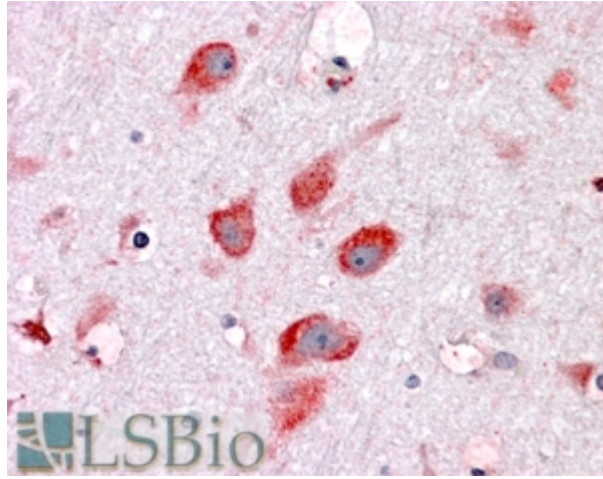
**Western blot:** Preliminary experiments gave bands at approx 17-18kDa and 25kDa in Human Liver lysates after 0.5µg/ml antibody staining. Please note that currently we cannot find an explanation in the literature for the bands we observe given the calculated size of 14.8kDa according to NP\_000974.1. Both detected bands were successfully blocked by incubation with the immunizing peptide (and BLAST results with the immunizing peptide sequence did not identify any other proteins to explain the additional bands). This batch is not expected to cross-react with Mouse and Rat in Western blot.

**IHC:** In paraffin embedded Human Brain (Cortex) shows cytoplasm staining in neuronal bodies. Recommended concentration: 3-6µg/ml. Paraffin embedded Human Thyroid, Uterus and Testis. Recommended concentration: 3.75µg/ml.

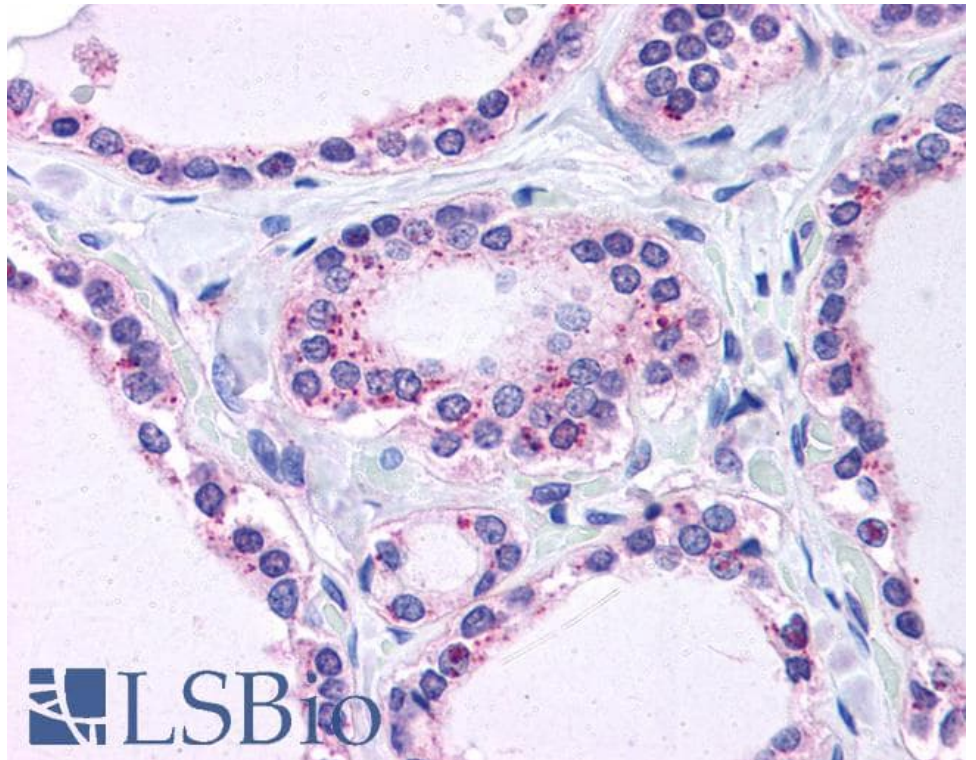
### Species Reactivity

**Tested:** Human

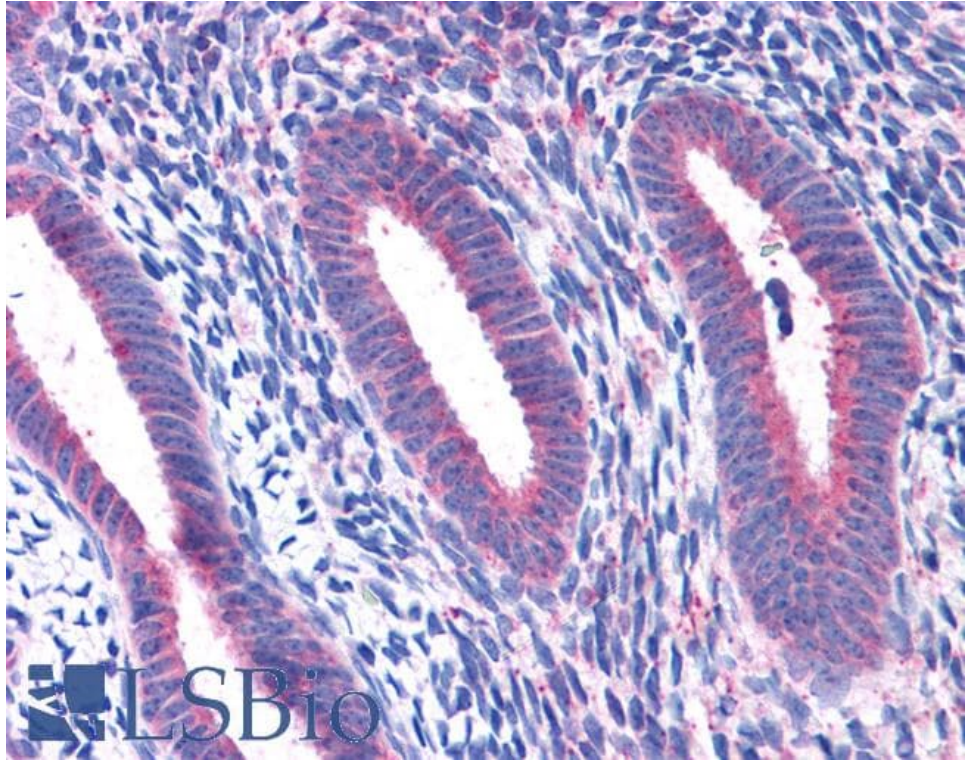
**Expected from sequence similarity:** Human, Mouse, Rat



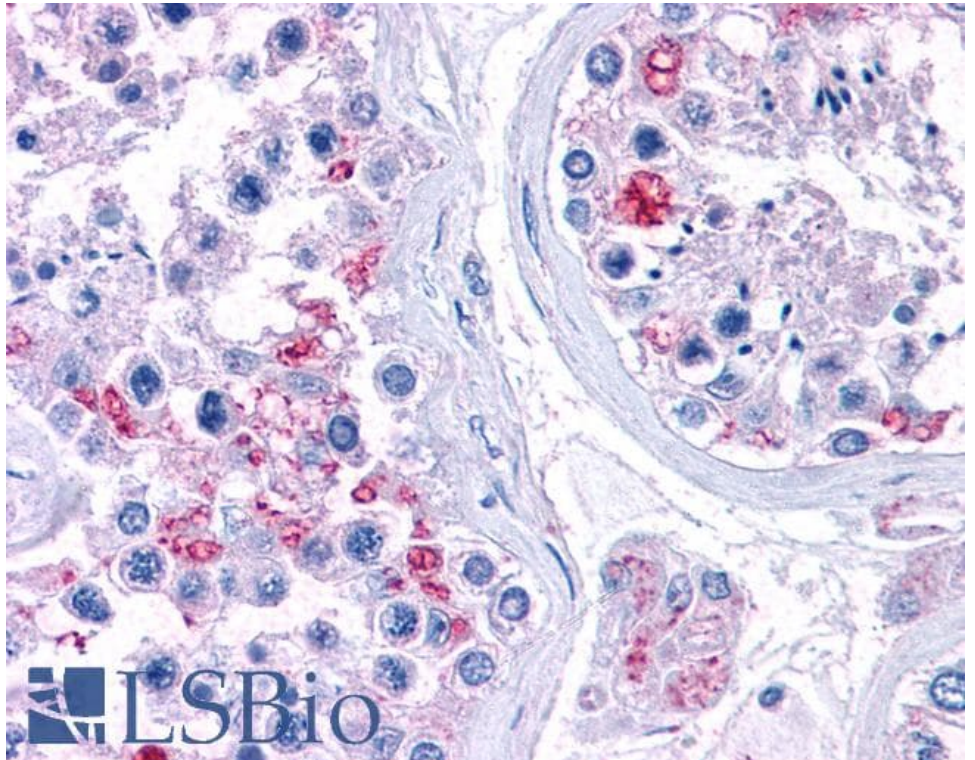
EB08104 (3.8µg/ml) staining of paraffin embedded Human Cortex. Steamed antigen retrieval with citrate buffer pH 6, AP-staining.



EB08104 (3.75µg/ml) staining of paraffin embedded Human Thyroid. Steamed antigen retrieval with citrate buffer pH 6, AP-staining.



EB08104 (3.75µg/ml) staining of paraffin embedded Human Uterus. Steamed antigen retrieval with citrate buffer pH 6, AP-staining.



EB08104 (3.75µg/ml) staining of paraffin embedded Human Testis. Steamed antigen retrieval with citrate buffer pH 6, AP-staining.