



UK Office

Everest Biotech Ltd

Cherwell Innovation Centre
77 Heyford Park
Upper Heyford
Oxfordshire
OX25 5HD
UK

Enquiries:

info@everestbiotech.com

Sales:

sales@everestbiotech.com

Tech support:

support@everestbiotech.com

Tel: +44 (0)1869 238326

www.everestbiotech.com

**Research Use Only. Not for
diagnostic or therapeutic use.**

EB06542 - Goat Anti-RIF1 (aa 2076-2089) Antibody

Size: 100µg specific antibody in 200µl



Target Protein

Principal Names: Rif1, telomere-associated protein RIF1 homolog, Rap1 interacting factor 1

Official Symbol: RIF1

Accession Number(s): NP_060621.3

Human GeneID(s): [55183](#)

Important Comments: This antibody is expected to recognise an epitope corresponding to aa 2076-2089 of human RIF1 protein.

Immunogen

Peptide with sequence CEEGIIDANKTETNT, from the internal region of the protein sequence according to NP_060621.3.

Please note the [peptide](#) is available for sale.

Purification and Storage

Purified from goat serum by ammonium sulphate precipitation followed by antigen affinity chromatography using the immunizing peptide.

Supplied at 0.5 mg/ml in Tris saline, 0.02% sodium azide, pH7.3 with 0.5% bovine serum albumin.

Aliquot and store at -20°C. Minimize freezing and thawing.

Applications Tested

Peptide ELISA: antibody detection limit dilution 1:16000.

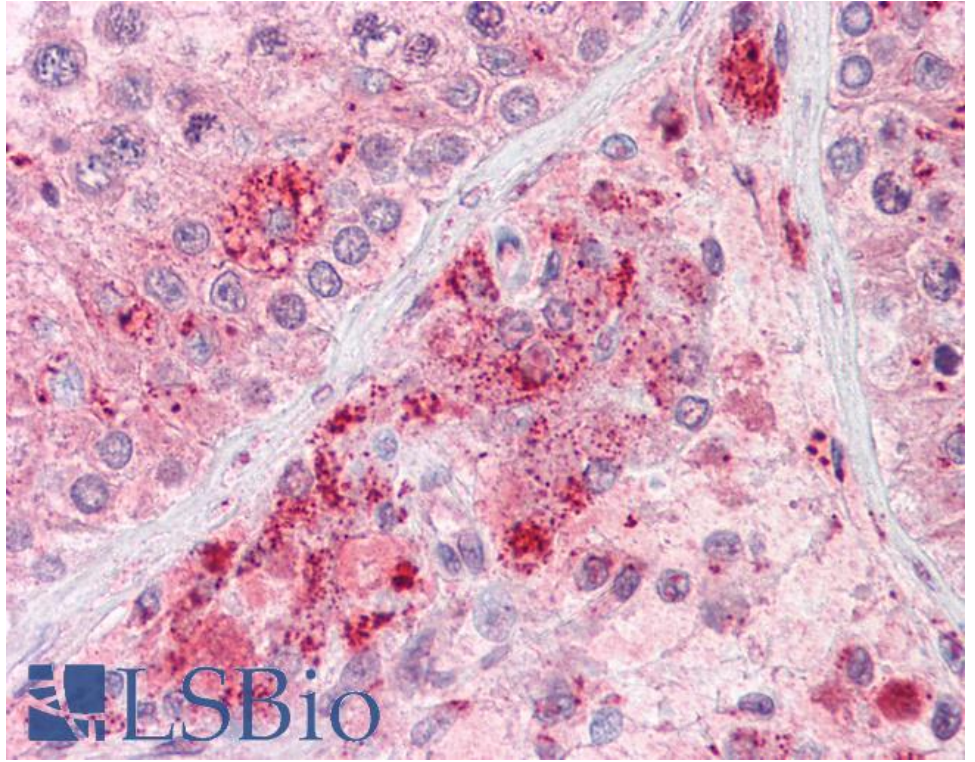
Western blot: Not yet tested - our routinely used western blotting protocol does not allow detection of proteins as large as the predicted size of approx. 247kDa according to NP_060621. Therefore we cannot recommend an optimal concentration.

IHC: Paraffin embedded Human Testis and Brain (Cortex). Recommended concentration: 1-2µg/ml.

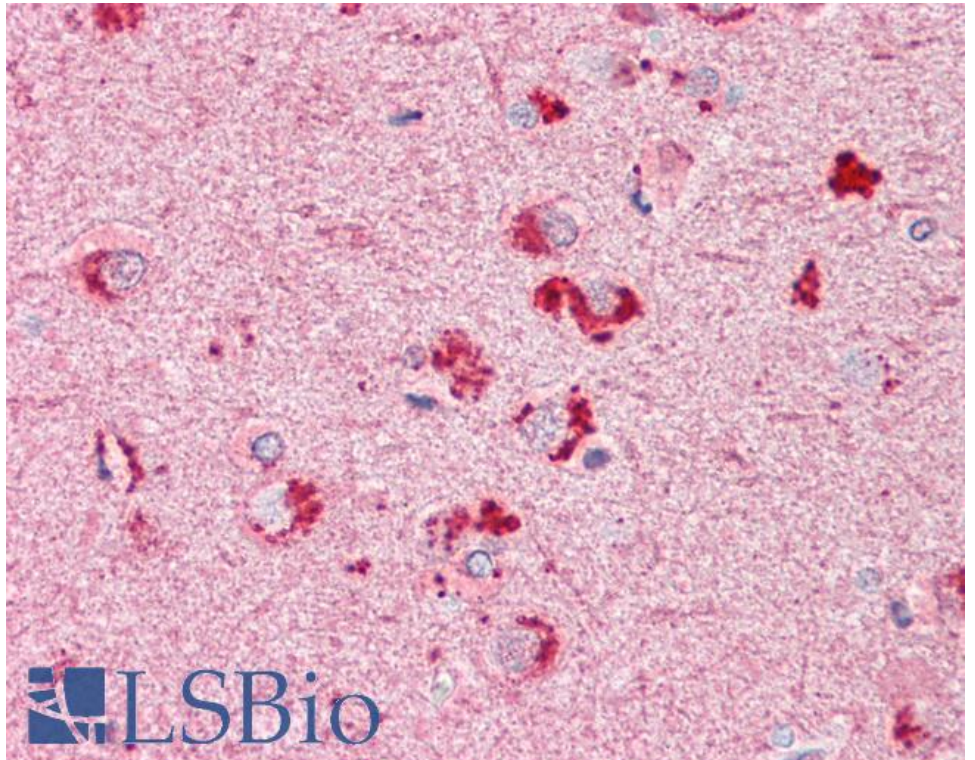
Species Reactivity

Tested: Human

Expected from sequence similarity: Human



EB06542 (3.75µg/ml) staining of paraffin embedded Human Testis. Steamed antigen retrieval with citrate buffer pH 6, AP-staining.



EB06542 (3.75µg/ml) staining of paraffin embedded Human Cortex. Steamed antigen retrieval with citrate buffer pH 6, AP-staining.