

UK Office

Everest Biotech Ltd

Cherwell Innovation Centre
77 Heyford Park
Upper Heyford
Oxfordshire
OX25 5HD
UK

Enquiries:

info@everestbiotech.com

Sales:

sales@everestbiotech.com

Tech support:

support@everestbiotech.com

Tel: +44 (0)1869 238326

www.everestbiotech.com

**Research Use Only. Not for
diagnostic or therapeutic use.**

EB11540 - Goat Anti-RIF1 Antibody

Size: 100µg specific antibody in 200µl



Target Protein

Principal Names: DKFZp434D1026, DKFZp781N1478, FLJ12870, OTTHUMP00000162712, OTTHUMP00000207206, OTTHUMP00000207207, OTTHUMP00000207208, OTTHUMP00000207210, RAP1 interacting factor homolog (yeast), rap1-interacting factor 1 homolog, RIF1, telomere-associated protein RIF1

Official Symbol: RIF1

Accession Number(s): NP_060621.3; NP_001171134.1

Human GeneID(s): [55183](#)

Non-Human GeneID(s): 51869 (mouse)

Important Comments: This antibody is expected to recognize both reported isoforms (NP_060621.3; NP_001171134.1). The immunizing peptide sequence has been optimised for cross-reactivity in mouse. Reported variants represent identical protein: NP_001171135.1, NP_001171136.1, NP_001171134.1

Immunogen

Peptide with sequence C-RNLQSRWRSPHEN, from the C Terminus of the protein sequence according to NP_060621.3; NP_001171134.1.

Please note the [peptide](#) is available for sale.

Purification and Storage

Purified from goat serum by ammonium sulphate precipitation followed by antigen affinity chromatography using the immunizing peptide.

Supplied at 0.5 mg/ml in Tris saline, 0.02% sodium azide, pH7.3 with 0.5% bovine serum albumin.

Aliquot and store at -20°C. Minimize freezing and thawing.

Applications Tested

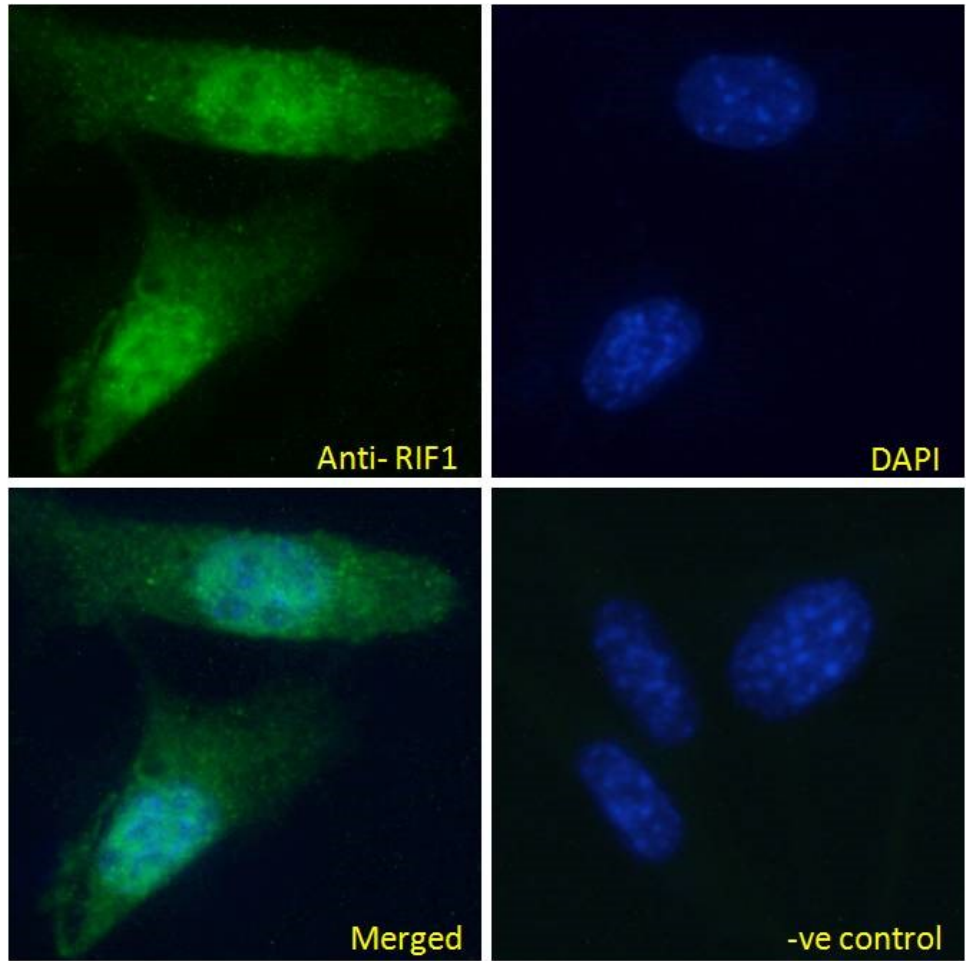
Peptide ELISA: antibody detection limit dilution 1:128000.

Immunofluorescence: Expression of the protein seen in the nucleus of NIH3T3, HEK293 and U2OS cells. Recommended concentration: 10µg/ml.

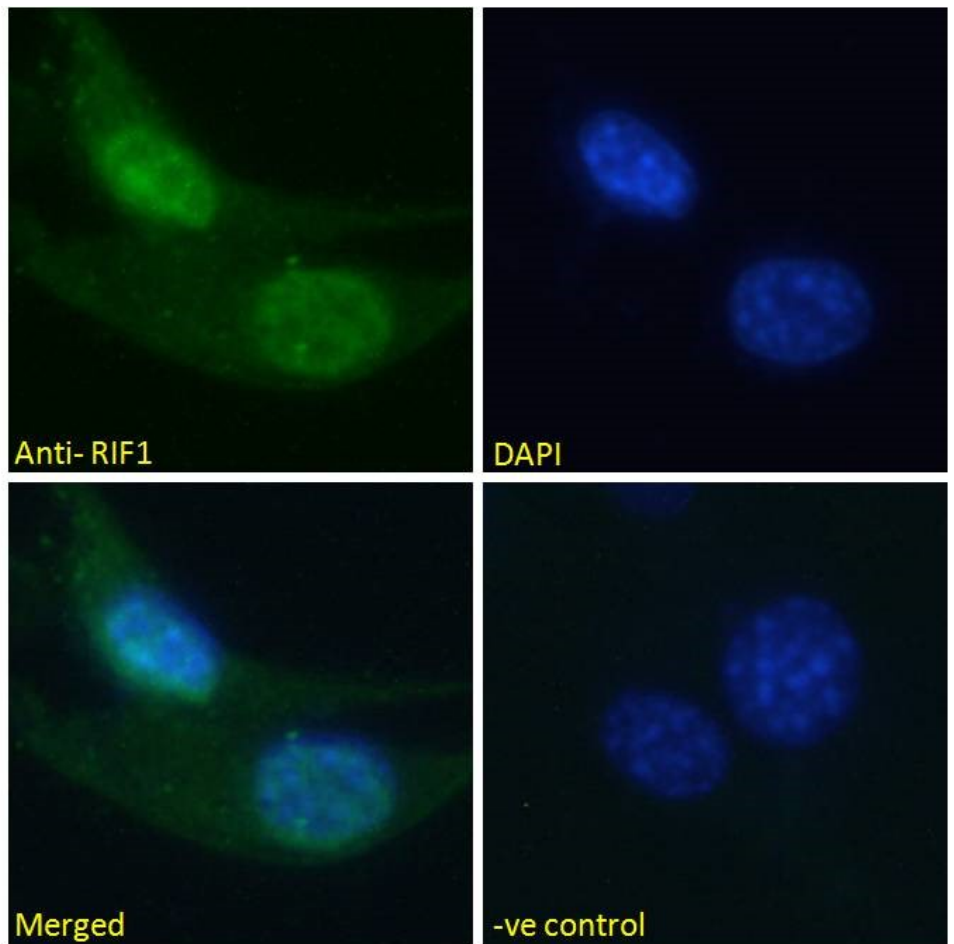
Species Reactivity

Tested: Human, Mouse

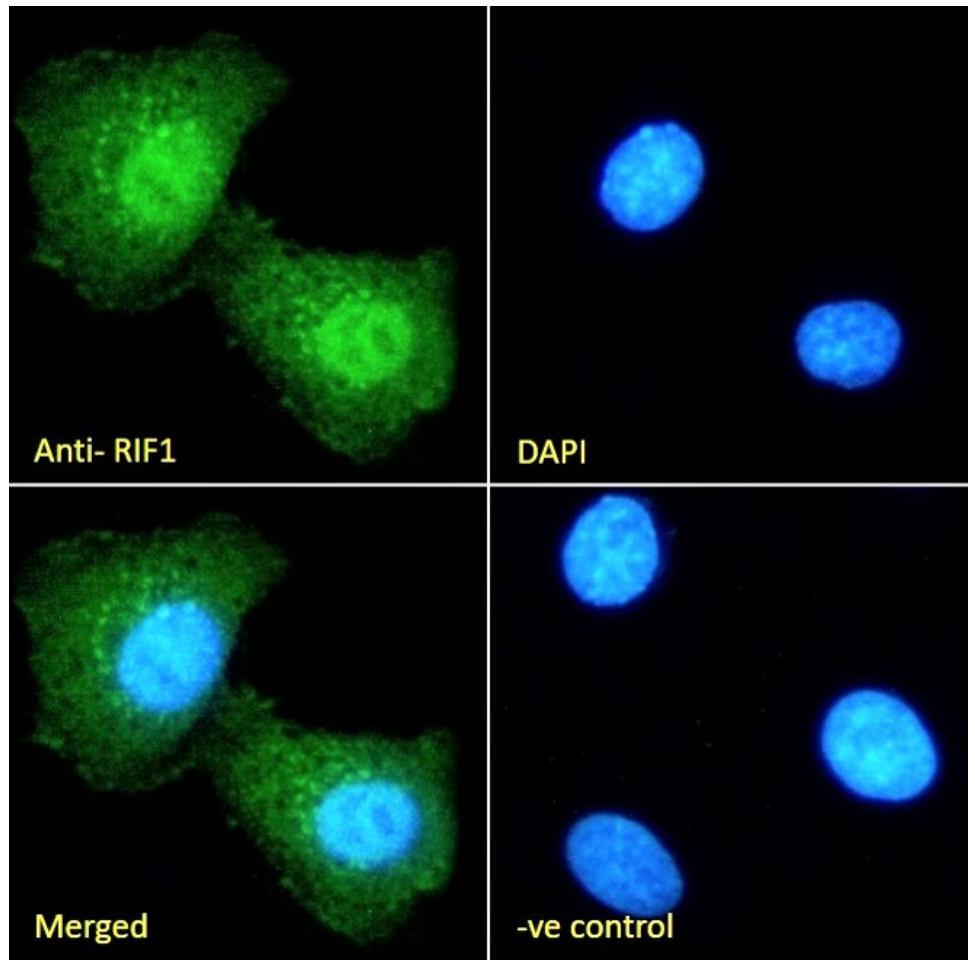
Expected from sequence similarity: Human, Mouse, Dog, Pig, Cow



EB11540 Immunofluorescence analysis of paraformaldehyde fixed NIH3T3 cells, permeabilized with 0.15% Triton. Primary incubation 1hr (10ug/ml) followed by Alexa Fluor 488 secondary antibody (2ug/ml), showing nuclear staining. The nuclear stain is DAPI (blue). Negative control: Unimmunized goat IgG (10ug/ml) followed by Alexa Fluor 488 secondary antibody (2ug/ml).



EB11540 Immunofluorescence analysis of paraformaldehyde fixed U2OS cells, permeabilized with 0.15% Triton. Primary incubation 1hr (10ug/ml) followed by Alexa Fluor 488 secondary antibody (2ug/ml), showing nuclear staining. The nuclear stain is DAPI (blue). Negative control: Unimmunized goat IgG (10ug/ml) followed by Alexa Fluor 488 secondary antibody (2ug/ml).



EB11540 Immunofluorescence analysis of paraformaldehyde fixed HEK293 cells, permeabilized with 0.15% Triton. Primary incubation 1hr (10ug/ml) followed by Alexa Fluor 488 secondary antibody (2ug/ml), showing nuclear and some cytoplasmic staining. The nuclear stain is DAPI (blue). Negative control: Unimmunized goat IgG (10ug/ml) followed by Alexa Fluor 488 secondary antibody (2ug/ml).