



UK Office

Everest Biotech Ltd

Cherwell Innovation Centre
77 Heyford Park
Upper Heyford
Oxfordshire
OX25 5HD
UK

Enquiries:

info@everestbiotech.com

Sales:

sales@everestbiotech.com

Tech support:

support@everestbiotech.com

Tel: +44 (0)1869 238326

Fax: +44 (0)1869 238327

US Office

Everest Biotech c/o Abcore

405 Maple Street, Suite A106
Ramona,
CA 92065
USA

Inquiries:

info@everestbiotech.com

Sales:

usasales@everestbiotech.com

Tech support:

support@everestbiotech.com

Tel: 888-320-4628 (toll-free)

Fax: 888-841-9041

www.everestbiotech.com

**Research Use Only. Not for
diagnostic or therapeutic use.**

EB08339 - Goat Anti-RIG1 / RARRES3 (aa 124 to 136) Antibody

Size: 100µg specific antibody in 200µl



Target Protein

Principal Names: RARRES3, retinoic acid receptor responder (tazarotene induced) 3, HRASLS4, MGC8906, RIG1, TIG3

Official Symbol: PLAAT4

Accession Number(s): NP_004576.2

Human GeneID(s): [5920](#)

Immunogen

Peptide with sequence KSRCKQVEKAKVE, from the internal region of the protein sequence according to NP_004576.2.

Please note the [peptide](#) is available for sale.

Purification and Storage

Purified from goat serum by ammonium sulphate precipitation followed by antigen affinity chromatography using the immunizing peptide.

Supplied at 0.5 mg/ml in Tris saline, 0.02% sodium azide, pH7.3 with 0.5% bovine serum albumin.

Aliquot and store at -20°C. Minimize freezing and thawing.

Applications Tested

Peptide ELISA: antibody detection limit dilution 1:128000.

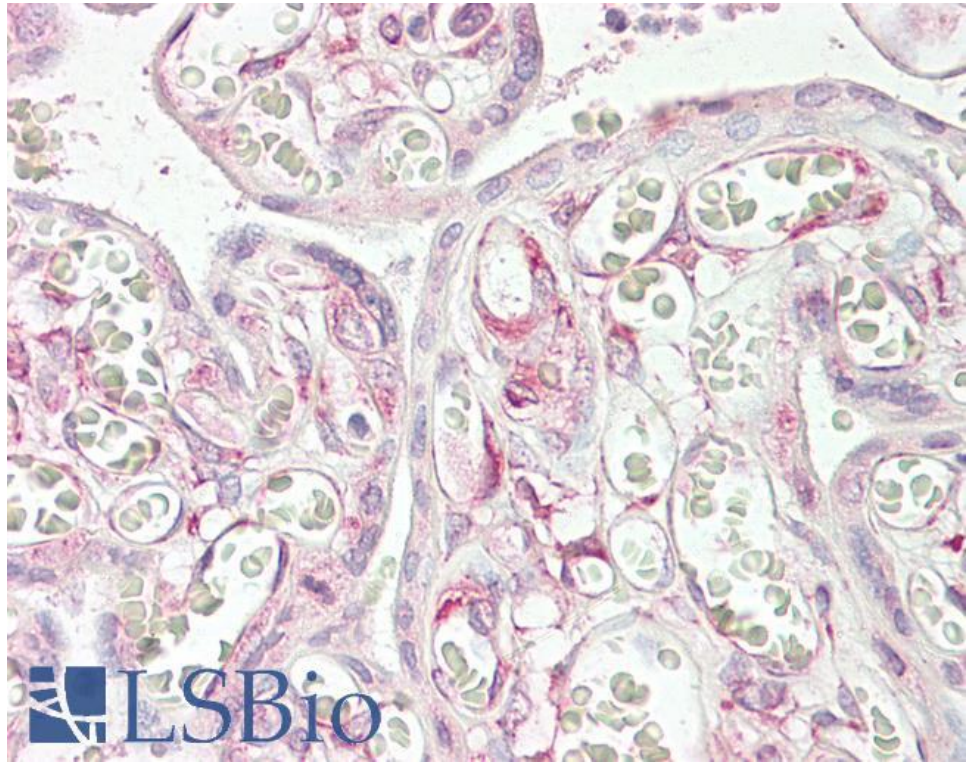
Western blot: Preliminary experiments gave bands at approx 22kDa and 55kDa in Human Thymus lysates after 1µg/ml antibody staining. The 55kDa band was observed in all tissues tested. Please note that currently we cannot find an explanation in the literature for the bands we observe given the calculated size of 18.8kDa according to NP_004576.2. Both detected bands were successfully blocked by incubation with the immunizing peptide (and BLAST results with the immunizing peptide sequence did not identify any other proteins to explain the additional bands).

IHC: Paraffin embedded Human Placenta. Recommended concentration: 3.75µg/ml.

Species Reactivity

Tested: Human

Expected from sequence similarity: Human



EB08339 (3.75µg/ml) staining of paraffin embedded Human Placenta. Steamed antigen retrieval with citrate buffer pH 6, AP-staining.