



International Office

Everest Biotech Ltd

Vector Laboratories, Inc.
6737 Mowry Ave
Newark, CA 94560
United States

Customer Service:

customerservice@vectorlabs.com

Technical Service:

technical@vectorlabs.com

Tel: +1 (800) 227-6666

www.everestbiotech.com

**Research Use Only. Not for
diagnostic or therapeutic use.**

EB09546 - Goat Anti-RIP140 Antibody

Size: 100µg specific antibody in 200µl



Target Protein

Principal Names: NRIP1, nuclear receptor interacting protein 1, FLJ77253, RIP140, OTTHUMP00000083036, OTTHUMP00000083037, nuclear factor RIP140, receptor interacting protein 140

Official Symbol: NRIP1

Accession Number(s): NP_003480.2

Human GeneID(s): [8204](#)

Non-Human GeneID(s): 268903 (mouse), 304157 (rat)

Immunogen

Peptide with sequence C-EKDSPRLTKTNP, from the internal region of the protein sequence according to NP_003480.2.

Please note the [peptide](#) is available for sale.

Purification and Storage

Purified from goat serum by ammonium sulphate precipitation followed by antigen affinity chromatography using the immunizing peptide.

Supplied at 0.5 mg/ml in Tris saline, 0.02% sodium azide, pH7.3 with 0.5% bovine serum albumin.

Aliquot and store at -20°C. Minimize freezing and thawing.

Applications Tested

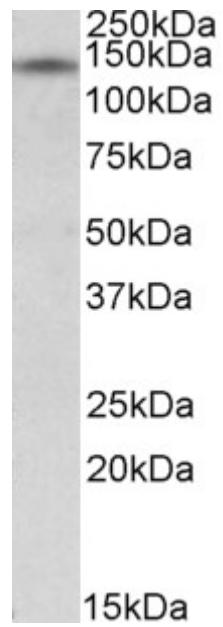
Peptide ELISA: antibody detection limit dilution 1:32000.

Western blot: Approx 140kDa band observed in Human Brain (Cerebellum) lysates (calculated MW of 127kDa according to NP_003480.2). Recommended concentration: 0.5-2µg/ml.

Species Reactivity

Tested: Human

Expected from sequence similarity: Human, Mouse, Rat, Dog, Cow



EB09546 (0.5µg/ml) staining of Human Cerebellum lysate (35µg protein in RIPA buffer). Primary incubation was 1 hour. Detected by chemiluminescence.