



UK Office

Everest Biotech Ltd

Cherwell Innovation Centre
77 Heyford Park
Upper Heyford
Oxfordshire
OX25 5HD
UK

Enquiries:

info@everestbiotech.com

Sales:

sales@everestbiotech.com

Tech support:

support@everestbiotech.com

Tel: +44 (0)1869 238326

www.everestbiotech.com

**Research Use Only. Not for
diagnostic or therapeutic use.**

EB05854 - Goat Anti-RNF13 / RZF (isoform 1 and 3) Antibody

Size: 100µg specific antibody in 200µl



Target Protein

Principal Names: RNF13, ring finger protein 13, RZF, RING zinc finger protein, MGC13689, FLJ93817

Official Symbol: RNF13

Accession Number(s): NP_009213.1; NP_001365216.1; NP_001365220.1

Human GeneID(s): [11342](#)

Important Comments: Reported variants represent identical protein (NP_009213.1; NP_899237.1).

Immunogen

Peptide with sequence C-PNGERDYNIANTV, from the C Terminus of the protein sequence according to NP_009213.1; NP_001365216.1; NP_001365220.1.

Please note the [peptide](#) is available for sale.

Purification and Storage

Purified from goat serum by ammonium sulphate precipitation followed by antigen affinity chromatography using the immunizing peptide.

Supplied at 0.5 mg/ml in Tris saline, 0.02% sodium azide, pH7.3 with 0.5% bovine serum albumin.

Aliquot and store at -20°C. Minimize freezing and thawing.

Applications Tested

Peptide ELISA: antibody detection limit dilution 1:1000.

Western blot: Approx. 42kDa band observed in lysates of cell line A431 and in preliminary testing of Human Lung lysate, and approx. 45kDa in lysates of cell line HeLa and in preliminary testing of U251 cell lysate (calculated MW of 42.8kDa according to NP_009213.1). Recommended concentration: 1-3µg/ml. Primary incubation 1 hour at room temperature.

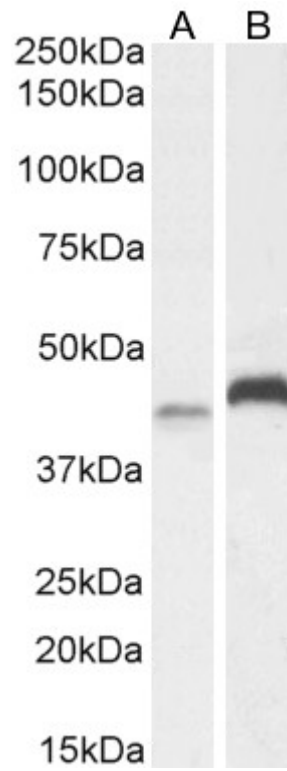
IHC: Paraffin embedded Human Kidney. Recommended concentration: 5µg/ml.

Flow Cytometry: Flow cytometric analysis of A431 cells. Recommended concentration: 10µg/ml.

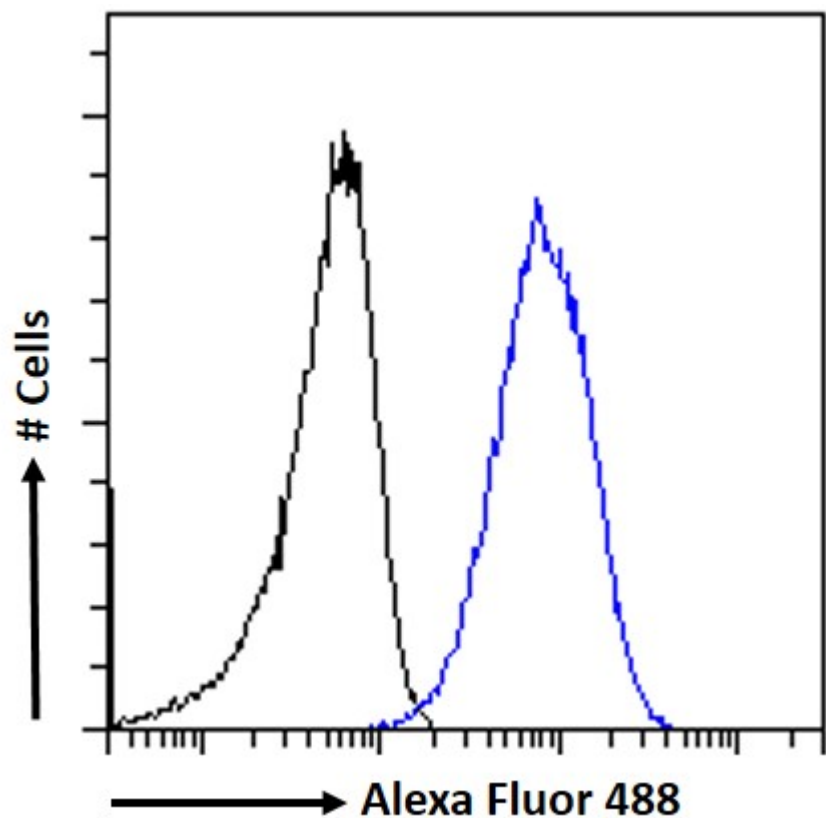
Species Reactivity

Tested: Human

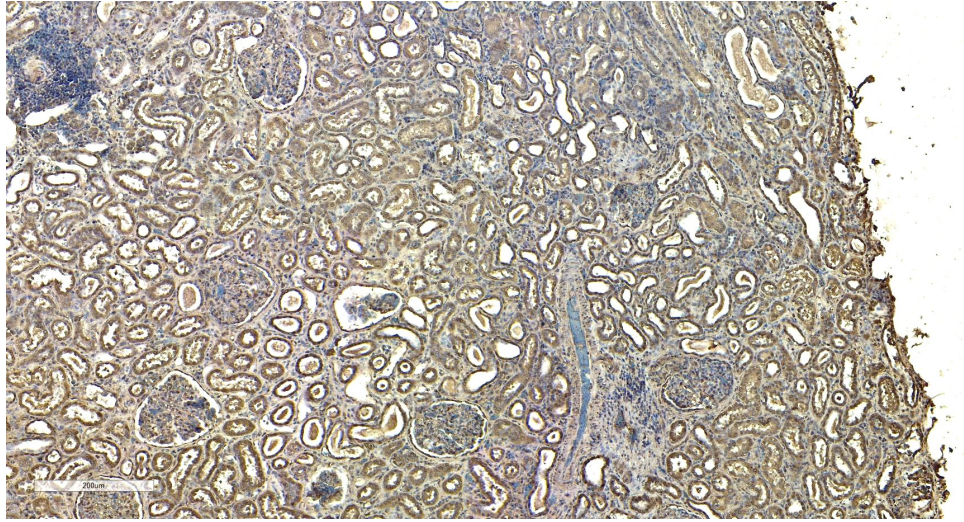
Expected from sequence similarity: Human, Mouse, Rat, Dog, Pig, Cow



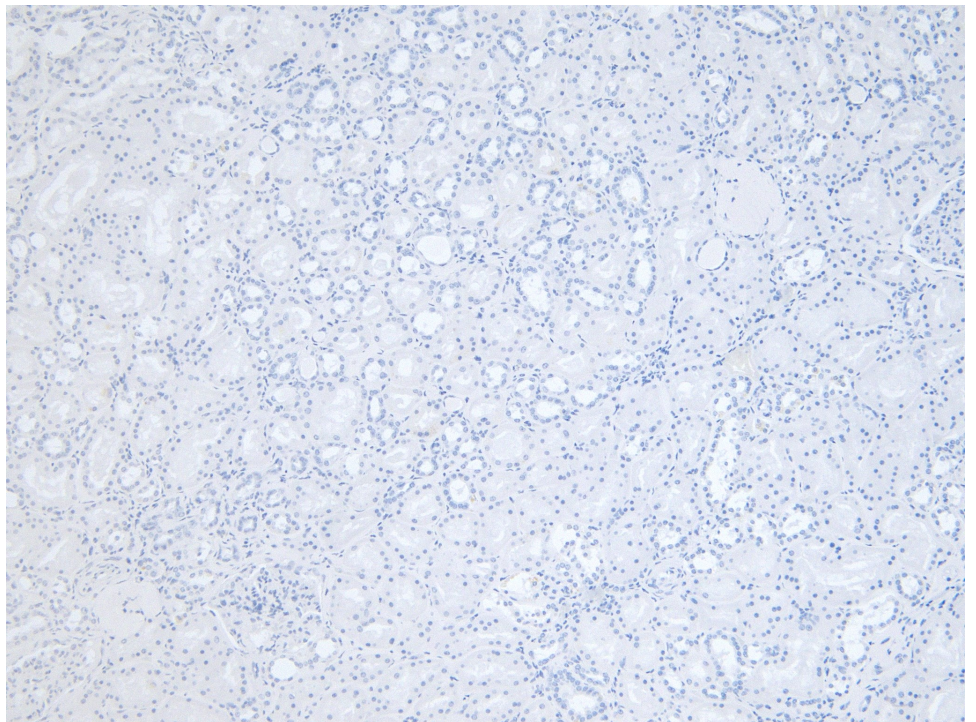
EB05854 (2 μ g/ml) staining of A431 (A) and HeLa (B) cell lysate (35 μ g protein in RIPA buffer). Detected by chemiluminescence.



EB05854 Flow cytometric analysis of paraformaldehyde fixed A431 cells (blue line), permeabilized with 0.5% Triton. Primary incubation 1hr (10 μ g/ml) followed by Alexa Fluor 488 secondary antibody (1 μ g/ml). IgG control: Unimmunized goat IgG (black line) followed by Alexa Fluor 488 secondary antibody.



EB05854 (5µg/ml) staining of paraffin embedded Human Kidney. Heat induced antigen retrieval with citrate buffer pH 6, HRP-staining.



EB05854 Negative Control showing staining of paraffin embedded Human Kidney, with no primary antibody.