



## UK Office

### Everest Biotech Ltd

Cherwell Innovation Centre  
77 Heyford Park  
Upper Heyford  
Oxfordshire  
OX25 5HD  
UK

Enquiries:

[info@everestbiotech.com](mailto:info@everestbiotech.com)

Sales:

[sales@everestbiotech.com](mailto:sales@everestbiotech.com)

Tech support:

[support@everestbiotech.com](mailto:support@everestbiotech.com)

Tel: +44 (0)1869 238326

[www.everestbiotech.com](http://www.everestbiotech.com)

**Research Use Only. Not for  
diagnostic or therapeutic use.**

## EB05834 - Goat Anti-RNF2 / dinG Antibody

Size: 100µg specific antibody in 200µl



### Target Protein

**Principal Names:** RNF2, DING, ring finger protein 2, BAP-1, Bap-1, BAP1, HIP13, RING1B, RING2, GS1-120K12.1

**Official Symbol:** RNF2

**Accession Number(s):** NP\_009143.1

**Human GeneID(s):** [6045](#)

**Non-Human GeneID(s):** 19821 (mouse)

### Immunogen

Peptide with sequence C-PMELYYAPTKEHK, from the C Terminus of the protein sequence according to NP\_009143.1.

Please note the [peptide](#) is available for sale.

### Purification and Storage

Purified from goat serum by ammonium sulphate precipitation followed by antigen affinity chromatography using the immunizing peptide.

Supplied at 0.5 mg/ml in Tris saline, 0.02% sodium azide, pH7.3 with 0.5% bovine serum albumin.

Aliquot and store at -20°C. Minimize freezing and thawing.

### Applications Tested

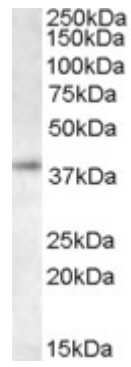
**Peptide ELISA:** antibody detection limit dilution 1:4000.

**Western blot:** Approx. 37-38kDa band observed in lysates of cell lines of NIH3T3 and K562 (calculated MW of 37.7kDa according to NP\_009143.1). Recommended concentration: 0.3-1µg/ml.

### Species Reactivity

**Tested:** Human

**Expected from sequence similarity:** Human, Mouse, Dog, Cow



EB05834 staining (0.5  $\mu\text{g/ml}$ ) of K562 lysate (RIPA buffer, 35 $\mu\text{g}$  total protein per lane). Primary incubated for 1 hour. Detected by western blot using chemiluminescence.