



## UK Office

### Everest Biotech Ltd

Cherwell Innovation Centre  
77 Heyford Park  
Upper Heyford  
Oxfordshire  
OX25 5HD  
UK

Enquiries:

[info@everestbiotech.com](mailto:info@everestbiotech.com)

Sales:

[sales@everestbiotech.com](mailto:sales@everestbiotech.com)

Tech support:

[support@everestbiotech.com](mailto:support@everestbiotech.com)

Tel: +44 (0)1869 238326

[www.everestbiotech.com](http://www.everestbiotech.com)

**Research Use Only. Not for  
diagnostic or therapeutic use.**

## EB07610 - Goat Anti-RNF213 / C17orf27 (internal) Antibody

Size: 100µg specific antibody in 200µl



### Target Protein

**Principal Names:** ring finger protein 213, RNF213, C17orf27, chromosome 17 open reading frame 27, KIAA1554

**Official Symbol:** RNF213

**Accession Number(s):** NP\_065965.3

**Human GeneID(s):** [57674](#)

### Immunogen

Peptide with sequence C-KNPQTQTEERFRPQ, from the internal region of the protein sequence according to NP\_065965.3.

Please note the [peptide](#) is available for sale.

### Purification and Storage

Purified from goat serum by ammonium sulphate precipitation followed by antigen affinity chromatography using the immunizing peptide.

Supplied at 0.5 mg/ml in Tris saline, 0.02% sodium azide, pH7.3 with 0.5% bovine serum albumin.

Aliquot and store at -20°C. Minimize freezing and thawing.

### Applications Tested

**Peptide ELISA:** antibody detection limit dilution 1:128000.

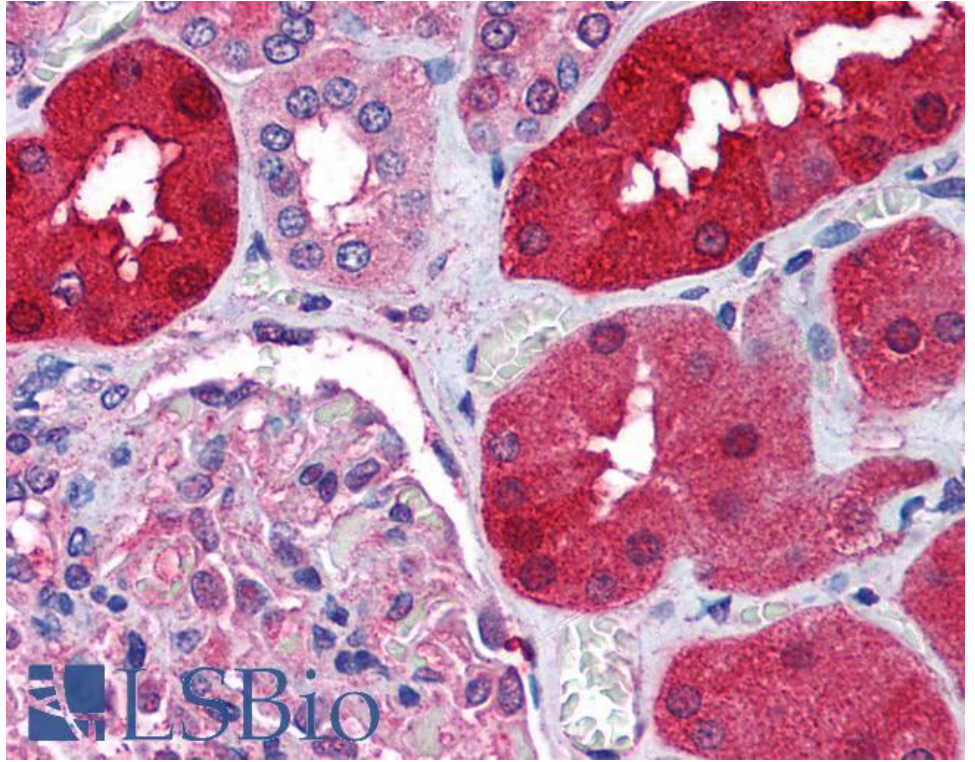
**Western blot:** Not yet tested - our routinely used western blotting protocol does not allow detection of proteins as large as the calculated size of 374kDa according to NP\_065965.3. Therefore we cannot recommend an optimal concentration.

**IHC:** Paraffin embedded Human Kidney. Recommended concentration: 1.25µg/ml.

### Species Reactivity

**Tested:** Human

**Expected from sequence similarity:** Human



EB07610 (1.25µg/ml) staining of paraffin embedded Human Kidney. Steamed antigen retrieval with citrate buffer pH 6, AP-staining.