



## International Office

### Everest Biotech Ltd

Vector Laboratories, Inc.  
6737 Mowry Ave  
Newark, CA 94560  
United States

Customer Service:

[customerservice@vectorlabs.com](mailto:customerservice@vectorlabs.com)

Technical Service:

[technical@vectorlabs.com](mailto:technical@vectorlabs.com)

Tel: +1 (800) 227-6666

[www.everestbiotech.com](http://www.everestbiotech.com)

**Research Use Only. Not for  
diagnostic or therapeutic use.**

## EB05871 - Goat Anti-RNF23 / TRIM39 Antibody

Size: 100µg specific antibody in 200µl



### Target Protein

**Principal Names:** TRIM39, TRIM39B, TFP, RNF23, MGC32984, tripartite motif-containing 39, ring finger protein 23, testis-abundant finger protein, DAAP-385L22.4, OTTHUMP00000029075, OTTHUMP00000029076

**Official Symbol:** TRIM39

**Accession Number(s):** NP\_067076.2; NP\_742013.1

**Human GeneID(s):** [56658](#)

**Non-Human GeneID(s):** 79263 (mouse)

**Important Comments:** This antibody is expected to recognise both reported isoforms (NP\_067076.2 and NP\_742013.1).

### Immunogen

Peptide with sequence C-NAAPLTIRPPTDWE, from the C Terminus of the protein sequence according to NP\_067076.2; NP\_742013.1.

Please note the [peptide](#) is available for sale.

### Purification and Storage

Purified from goat serum by ammonium sulphate precipitation followed by antigen affinity chromatography using the immunizing peptide.

Supplied at 0.5 mg/ml in Tris saline, 0.02% sodium azide, pH7.3 with 0.5% bovine serum albumin.

Aliquot and store at -20°C. Minimize freezing and thawing.

### Applications Tested

**Peptide ELISA:** antibody detection limit dilution 1:32000.

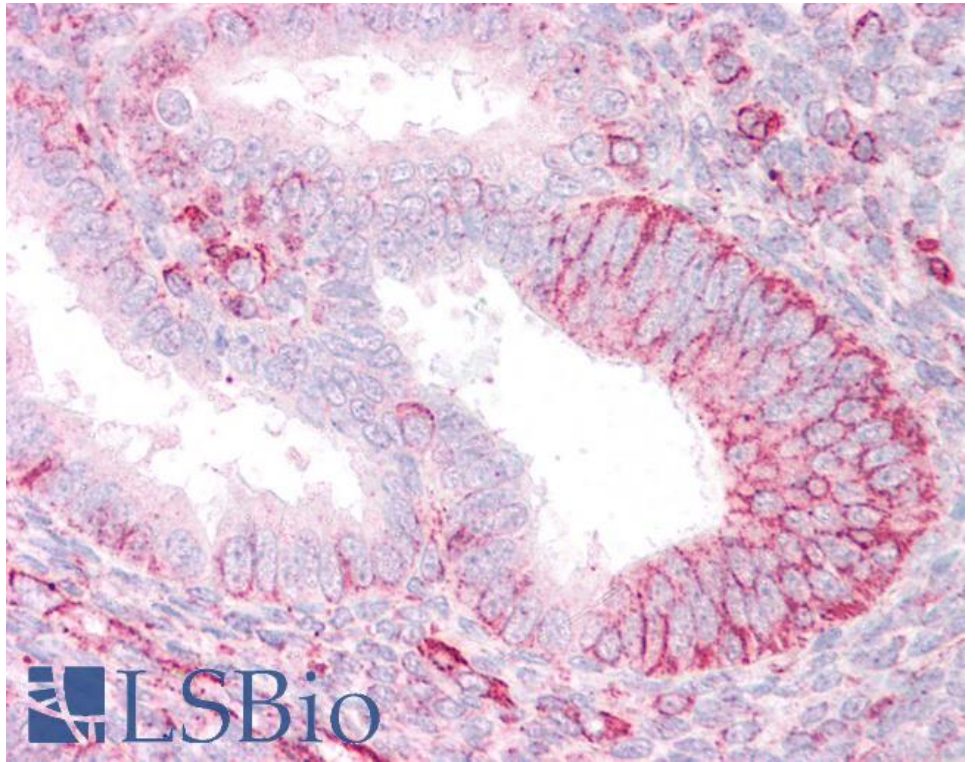
**Western blot:** Preliminary experiments gave an approx 49kDa band in Human Testis and Rat Testis lysates after 1µg/ml antibody staining. Please note that currently we cannot find an explanation in the literature for the band we observe given the calculated size of 56.4kDa according to NP\_NP\_742013.1 and of 59.7kDa according to NP\_067076.2. The 49kDa band was successfully blocked by incubation with the immunizing peptide.

**IHC:** Paraffin embedded Human Uterus. Recommended concentration: 3.75µg/ml.

### Species Reactivity

**Tested:** Human

**Expected from sequence similarity:** Human, Mouse, Rat, Dog, Pig



EB05871 (3.75µg/ml) staining of paraffin embedded Human Uterus. Steamed antigen retrieval with citrate buffer pH 6, AP-staining.