



International Office

Everest Biotech Ltd

Vector Laboratories, Inc.
6737 Mowry Ave
Newark, CA 94560
United States

Customer Service:

customerservice@vectorlabs.com

Technical Service:

technical@vectorlabs.com

Tel: +1 (800) 227-6666

www.everestbiotech.com

**Research Use Only. Not for
diagnostic or therapeutic use.**

EB05837 - Goat Anti-RNF3 (247 aa isoform) Antibody

Size: 100µg specific antibody in 200µl



Target Protein

Principal Names: RNF3, DONG1, RNF3A, MGC40413, ring finger protein 3, PCGF3, polycomb group ring finger 3, DKFZp686D20235, FLJ36550, FLJ43813, MGC129615

Official Symbol: PCGF3

Accession Number(s): NP_006306.2; NP_001382179.1

Human GenelD(s): [10336](#)

Non-Human GenelD(s): 69587 (mouse)

Important Comments: This antibody is expected to recognise tisoforms NP_001382179.1 and NP_006306.2, not the 132 aa isoform (NP_694982).

Immunogen

Peptide with sequence C-PLLLHYRPKMDLL, from the C Terminus of the protein sequence according to NP_006306.2; NP_001382179.1.

Please note the [peptide](#) is available for sale.

Purification and Storage

Purified from goat serum by ammonium sulphate precipitation followed by antigen affinity chromatography using the immunizing peptide.

Supplied at 0.5 mg/ml in Tris saline, 0.02% sodium azide, pH7.3 with 0.5% bovine serum albumin.

Aliquot and store at -20°C. Minimize freezing and thawing.

Applications Tested

Peptide ELISA: antibody detection limit dilution 1:2000.

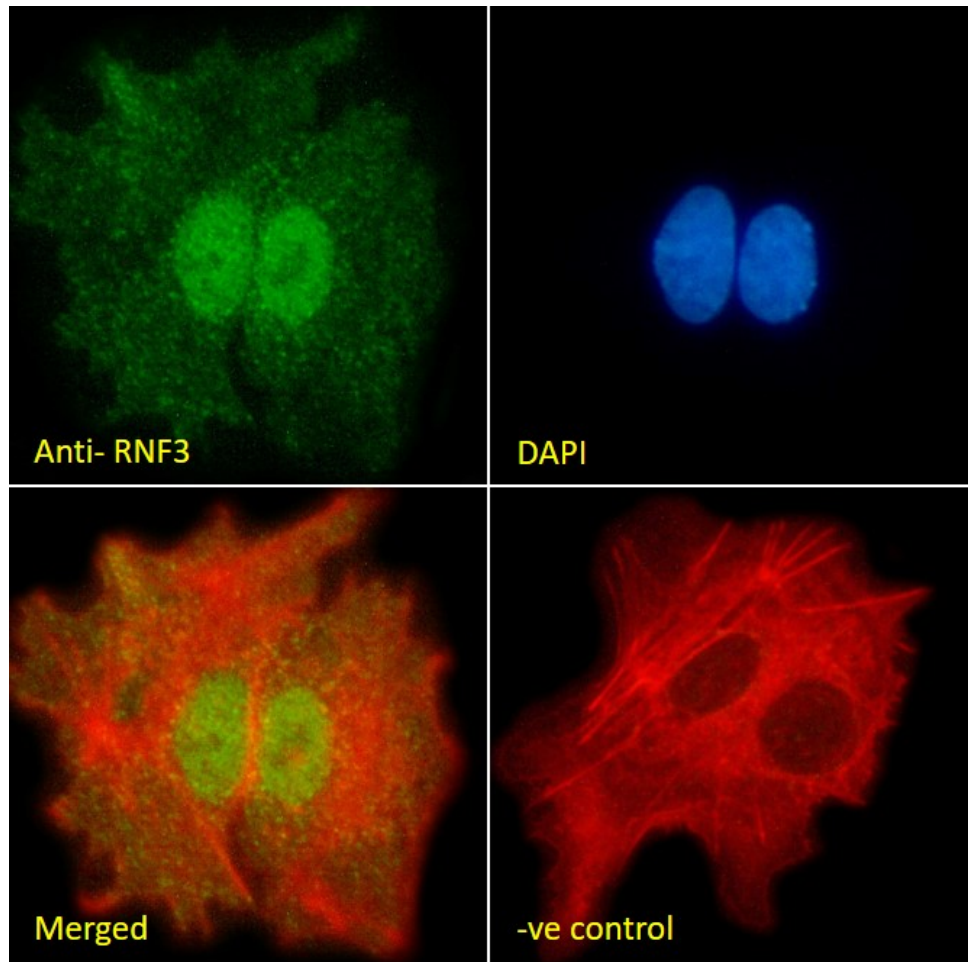
Immunofluorescence: Strong expression of the protein seen in the nuclei of HepG2 cells. Recommended concentration: 10µg/ml.

Flow Cytometry: Flow cytometric analysis of HepG2 cells. Recommended concentration: 10ug/ml.

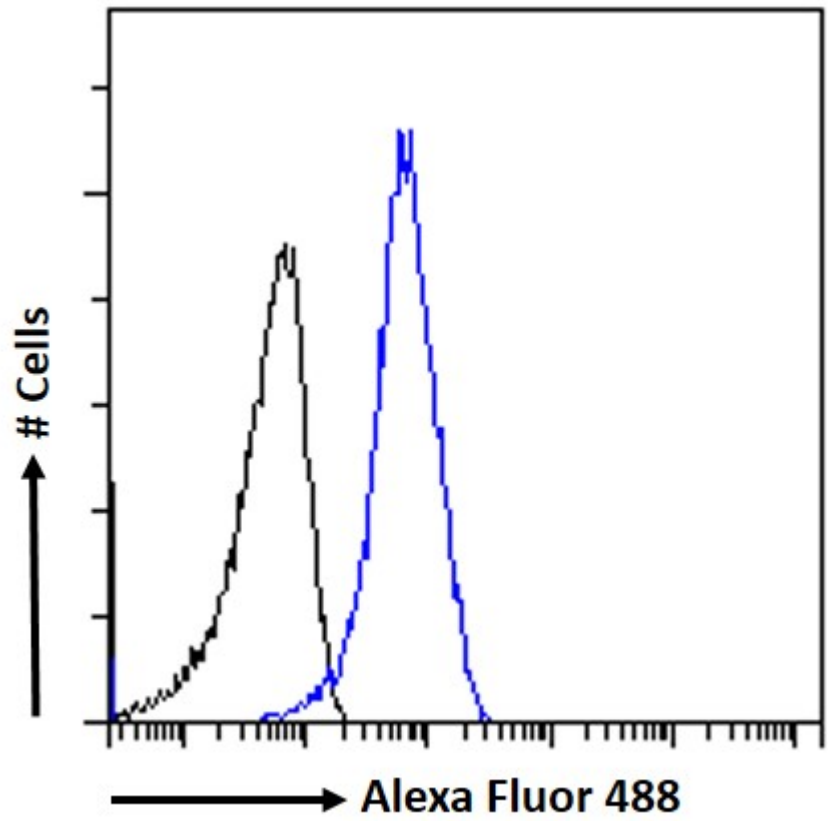
Species Reactivity

Tested: Human

Expected from sequence similarity: Human, Rat, Cow



EB05837 Immunofluorescence analysis of paraformaldehyde fixed HepG2 cells, permeabilized with 0.15% Triton. Primary incubation 1hr (10ug/ml) followed by Alexa Fluor 488 secondary antibody (2ug/ml), showing nuclear staining. Actin filaments were stained with phalloidin (red) and the nuclear stain is DAPI (blue). Negative control: Unimmunized goat IgG (10ug/ml) followed by Alexa Fluor 488 secondary antibody (2ug/ml).



EB05837 Flow cytometric analysis of paraformaldehyde fixed HepG2 cells (blue line), permeabilized with 0.5% Triton. Primary incubation 1hr (10ug/ml) followed by Alexa Fluor 488 secondary antibody (1ug/ml). IgG control: Unimmunized goat IgG (black line) followed by Alexa Fluor 488 secondary antibody.