



UK Office

Everest Biotech Ltd

Cherwell Innovation Centre
77 Heyford Park
Upper Heyford
Oxfordshire
OX25 5HD
UK

Enquiries:

info@everestbiotech.com

Sales:

sales@everestbiotech.com

Tech support:

support@everestbiotech.com

Tel: +44 (0)1869 238326

Fax: +44 (0)1869 238327

US Office

Everest Biotech c/o Abcore

405 Maple Street, Suite A106
Ramona,
CA 92065
USA

Inquiries:

info@everestbiotech.com

Sales:

usasales@everestbiotech.com

Tech support:

support@everestbiotech.com

Tel: 888-320-4628 (toll-free)

Fax: 888-841-9041

www.everestbiotech.com

**Research Use Only. Not for
diagnostic or therapeutic use.**

EB05889 - Goat Anti-RNF34 / RFI (N Terminus) Antibody

Size: 100µg specific antibody in 200µl



Target Protein

Principal Names: RNF34, ring finger protein 34, RFI, RIF, RIFF, FLJ21786, RING finger protein RIFF, FYVE-RING finger protein MOMO, hRFI, CARP1, FLJ21786, caspases-8 and -10-associated RING finger protein 1

Official Symbol: RNF34

Accession Number(s): NP_919247.1; NP_079402.2

Human GeneID(s): [80196](#)

Non-Human GeneID(s): 80751 (mouse), 282845 (rat)

Important Comments: This antibody is expected to recognize both reported isoforms (NP_919247.1 and NP_079402.2).

Immunogen

Peptide with sequence KAGATSMWASCC, from the N Terminus of the protein sequence according to NP_919247.1; NP_079402.2.

Please note the [peptide](#) is available for sale.

Purification and Storage

Purified from goat serum by ammonium sulphate precipitation followed by antigen affinity chromatography using the immunizing peptide.

Supplied at 0.5 mg/ml in Tris saline, 0.02% sodium azide, pH7.3 with 0.5% bovine serum albumin.

Aliquot and store at -20°C. Minimize freezing and thawing.

Applications Tested

Peptide ELISA: antibody detection limit dilution 1:32000.

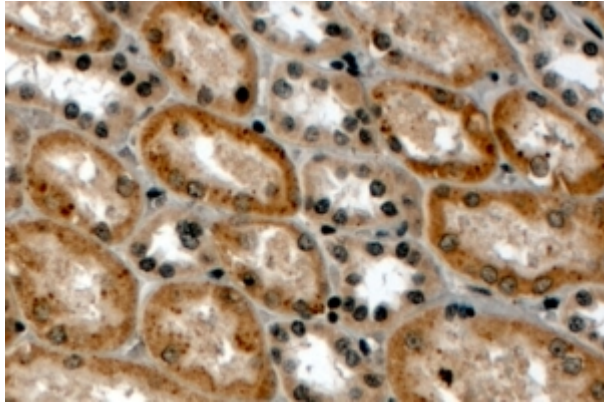
IHC: In paraffin embedded Human Kidney shows cytoplasm staining in select DCT.

Recommended concentration, 4-8µg/ml.

Species Reactivity

Tested: Human

Expected from sequence similarity: Human, Mouse, Rat, Dog, Cow



EB05889 (4 μ g/ml) staining of paraffin embedded Human Kidney. Steamed antigen retrieval with Tris/EDTA buffer pH 9, HRP-staining.