



International Office

Everest Biotech Ltd

Vector Laboratories, Inc.
6737 Mowry Ave
Newark, CA 94560
United States

Customer Service:

customerservice@vectorlabs.com

Technical Service:

technical@vectorlabs.com

Tel: +1 (800) 227-6666

www.everestbiotech.com

**Research Use Only. Not for
diagnostic or therapeutic use.**

EB09769 - Goat Anti-RNF7 Antibody

Size: 100µg specific antibody in 200µl



Target Protein

Principal Names: RNF7, ring finger protein 7, CKBBP1, ROC2, SAG, OTTHUMP00000180645, regulator of cullins 2, sensitive to apoptosis, zinc RING finger protein SAG, regulator of cullins 2, zinc RING finger protein SAG

Official Symbol: RNF7

Accession Number(s): NP_055060.1

Human GeneID(s): [9616](#)

Non-Human GeneID(s): 19823 (mouse)

Important Comments: This antibody is expected to recognize isoform 1 (NP_055060.1).

Immunogen

Peptide with sequence DACLRCAENKQE, from the internal region of the protein sequence according to NP_055060.1.

Please note the [peptide](#) is available for sale.

Purification and Storage

Purified from goat serum by ammonium sulphate precipitation followed by antigen affinity chromatography using the immunizing peptide.

Supplied at 0.5 mg/ml in Tris saline, 0.02% sodium azide, pH7.3 with 0.5% bovine serum albumin.

Aliquot and store at -20°C. Minimize freezing and thawing.

Applications Tested

Peptide ELISA: antibody detection limit dilution 1:8000.

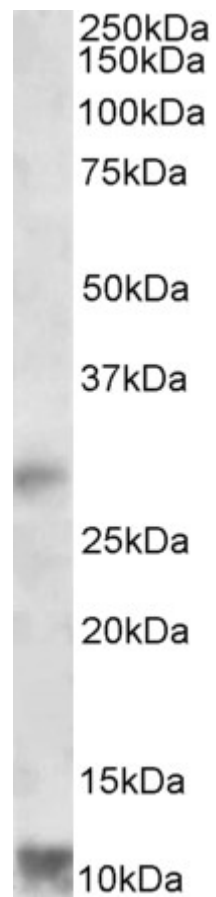
Western blot: Approx 11kDa band observed in Human Human Heart lysates (calculated MW of 12.7kDa according to NP_055060.1). Recommended concentration: 1-3µg/ml. An additional band of 28kDa was consistently observed, however this band was not blocked by the immunizing peptide and it is therefore a non-specific signal. We call for caution when used for other assays than Western blot.

IHC: Paraffin embedded Human Kidney. Recommended concentration: 5µg/ml.

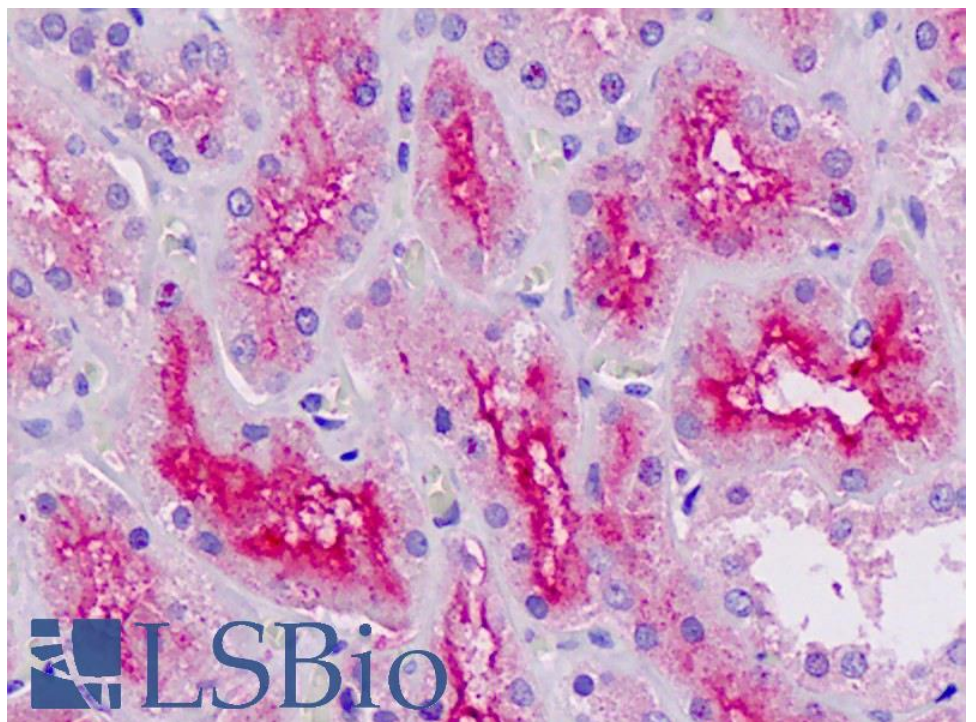
Species Reactivity

Tested: Human

Expected from sequence similarity: Human, Mouse



EB09769 (1 μ g/ml) staining of Human Heart lysate (35 μ g protein in RIPA buffer). Primary incubation was 1 hour.
Detected by chemiluminescence.



EB09769 (5 μ g/ml) staining of paraffin embedded Human Kidney. Steamed antigen retrieval with citrate buffer pH 6, AP-staining.