



International Office

Everest Biotech Ltd

Vector Laboratories, Inc.
6737 Mowry Ave
Newark, CA 94560
United States

Customer Service:

customerservice@vectorlabs.com

Technical Service:

technical@vectorlabs.com

Tel: +1 (800) 227-6666

www.everestbiotech.com

**Research Use Only. Not for
diagnostic or therapeutic use.**

EB08226 - Goat Anti-ROBO2 Antibody

Size: 100µg specific antibody in 200µl



Target Protein

Principal Names: ROBO2, roundabout, axon guidance receptor, homolog 2 (Drosophila), KIAA1568, SAX3, roundabout, axon guidance receptor, homolog 2

Official Symbol: ROBO2

Accession Number(s): NP_002933.1

Human GeneID(s): [6092](#)

Non-Human GeneID(s): 268902 (mouse), 84409 (rat)

Immunogen

Peptide with sequence C-NQSQRPRPTKKHK, from the internal region (near the C Terminus) of the protein sequence according to NP_002933.1.

Please note the [peptide](#) is available for sale.

Purification and Storage

Purified from goat serum by ammonium sulphate precipitation followed by antigen affinity chromatography using the immunizing peptide.

Supplied at 0.5 mg/ml in Tris saline, 0.02% sodium azide, pH7.3 with 0.5% bovine serum albumin.

Aliquot and store at -20°C. Minimize freezing and thawing.

Applications Tested

Peptide ELISA: antibody detection limit dilution 1:16000.

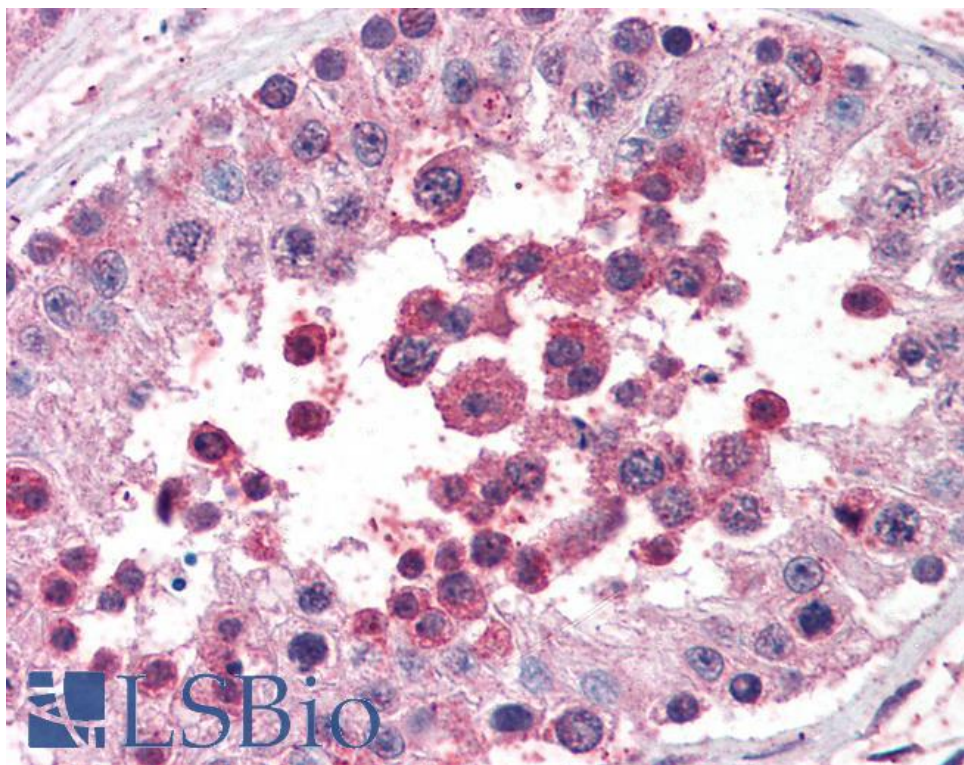
Western blot: Preliminary experiments gave an approx. 75kDa band in Human Brain (Amygdala) lysates after 0.3µg/ml antibody staining. Please note that currently we cannot find an explanation in the literature for the band we observe given the calculated size of 151kDa according to NP_002933.1. The 75kDa band was successfully blocked by incubation with the immunizing peptide.

IHC: Paraffin embedded Human Testis. Recommended concentration: 5µg/ml.

Species Reactivity

Tested: Human

Expected from sequence similarity: Human, Mouse, Rat, Dog



EB08226 (5µg/ml) staining of paraffin embedded Human Testis. Steamed antigen retrieval with citrate buffer pH 6, AP-staining.