



International Office

Everest Biotech Ltd

Vector Laboratories, Inc.
6737 Mowry Ave
Newark, CA 94560
United States

Customer Service:

customerservice@vectorlabs.com

Technical Service:

technical@vectorlabs.com

Tel: +1 (800) 227-6666

www.everestbiotech.com

**Research Use Only. Not for
diagnostic or therapeutic use.**

EB07057 - Goat Anti-ROBO3 (internal) Antibody

Size: 100µg specific antibody in 200µl



Target Protein

Principal Names: ROBO3, roundabout, axon guidance receptor, homolog 3 (Drosophila), HGNC:13433, FLJ21044, HGPPS, RBIG1, RIG1, retinoblastoma inhibiting gene 1, roundabout, axon guidance receptor, homolog 3

Official Symbol: ROBO3

Accession Number(s): NP_071765.2

Human GeneID(s): [64221](#)

Immunogen

Peptide with sequence C-RKDGARLKEEEGR, from the internal region of the protein sequence according to NP_071765.2.

Please note the [peptide](#) is available for sale.

Purification and Storage

Purified from goat serum by ammonium sulphate precipitation followed by antigen affinity chromatography using the immunizing peptide.

Supplied at 0.5 mg/ml in Tris saline, 0.02% sodium azide, pH7.3 with 0.5% bovine serum albumin.

Aliquot and store at -20°C. Minimize freezing and thawing.

Applications Tested

Peptide ELISA: antibody detection limit dilution 1:64000.

Flow Cytometry: Flow cytometric analysis of U2OS cells. Recommended concentration: 10ug/ml. This antibody was successfully used on rheumatoid arthritis synovial fibroblasts (RASf): Denk et al (2010) PMID: 20298552.

Species Reactivity

Tested: Human

Expected from sequence similarity: Human, Dog

Specific Reference

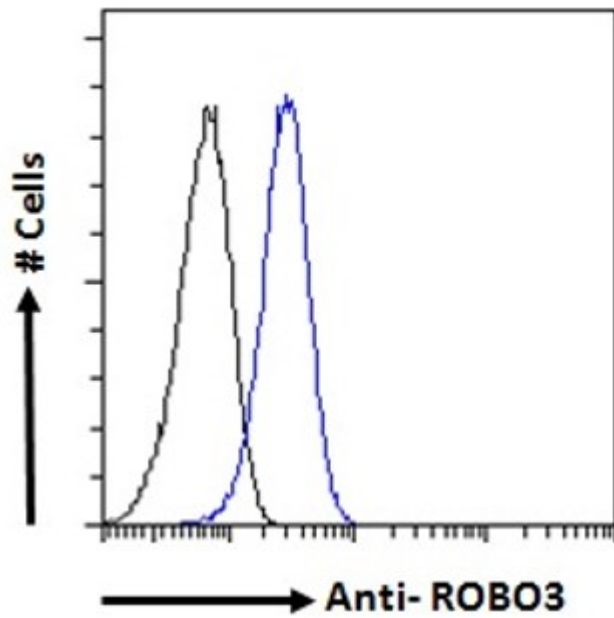
This antibody has been successfully used in FC on Human:

Denk AE, Kaufmann S, Stark K, Schedel J, Lowin T, Schubert T, Bosserhoff AK.

Slit3 inhibits Robo3-induced invasion of synovial fibroblasts in rheumatoid arthritis.

Arthritis Res Ther. 2010;12(2):R45.

PMID: 20298552



EB07057 Flow cytometric analysis of paraformaldehyde fixed U2OS cells (blue line), permeabilized with 0.5% Triton. Primary incubation 1hr (10ug/ml) followed by Alexa Fluor 488 secondary antibody (1ug/ml). IgG control: Unimmunized goat IgG (black line) followed by Alexa Fluor 488 secondary antibody.