



## UK Office

### Everest Biotech Ltd

Cherwell Innovation Centre  
77 Heyford Park  
Upper Heyford  
Oxfordshire  
OX25 5HD  
UK

Enquiries:

[info@everestbiotech.com](mailto:info@everestbiotech.com)

Sales:

[sales@everestbiotech.com](mailto:sales@everestbiotech.com)

Tech support:

[support@everestbiotech.com](mailto:support@everestbiotech.com)

Tel: +44 (0)1869 238326

Fax: +44 (0)1869 238327

## US Office

### Everest Biotech c/o Abcore

405 Maple Street, Suite A106  
Ramona,  
CA 92065  
USA

Inquiries:

[info@everestbiotech.com](mailto:info@everestbiotech.com)

Sales:

[usasales@everestbiotech.com](mailto:usasales@everestbiotech.com)

Tech support:

[support@everestbiotech.com](mailto:support@everestbiotech.com)

Tel: 888-320-4628 (toll-free)

Fax: 888-841-9041

[www.everestbiotech.com](http://www.everestbiotech.com)

**Research Use Only. Not for  
diagnostic or therapeutic use.**

## EB07057 - Goat Anti-ROBO3 (internal) Antibody

Size: 100µg specific antibody in 200µl



### Target Protein

**Principal Names:** ROBO3, roundabout, axon guidance receptor, homolog 3 (Drosophila), HGNC:13433, FLJ21044, HGPPS, RBIG1, RIG1, retinoblastoma inhibiting gene 1, roundabout, axon guidance receptor, homolog 3

**Official Symbol:** ROBO3

**Accession Number(s):** NP\_071765.2

**Human GeneID(s):** [64221](#)

### Immunogen

Peptide with sequence C-RKDGARLKEEEGR, from the internal region of the protein sequence according to NP\_071765.2.

Please note the [peptide](#) is available for sale.

### Purification and Storage

Purified from goat serum by ammonium sulphate precipitation followed by antigen affinity chromatography using the immunizing peptide.

Supplied at 0.5 mg/ml in Tris saline, 0.02% sodium azide, pH7.3 with 0.5% bovine serum albumin.

Aliquot and store at -20°C. Minimize freezing and thawing.

### Applications Tested

**Peptide ELISA:** antibody detection limit dilution 1:64000.

**Flow Cytometry:** Flow cytometric analysis of U2OS cells. Recommended concentration: 10ug/ml. This antibody was successfully used on rheumatoid arthritis synovial fibroblasts (RASf): Denk et al (2010) PMID: 20298552.

### Species Reactivity

**Tested:** Human

**Expected from sequence similarity:** Human, Dog

### Specific Reference

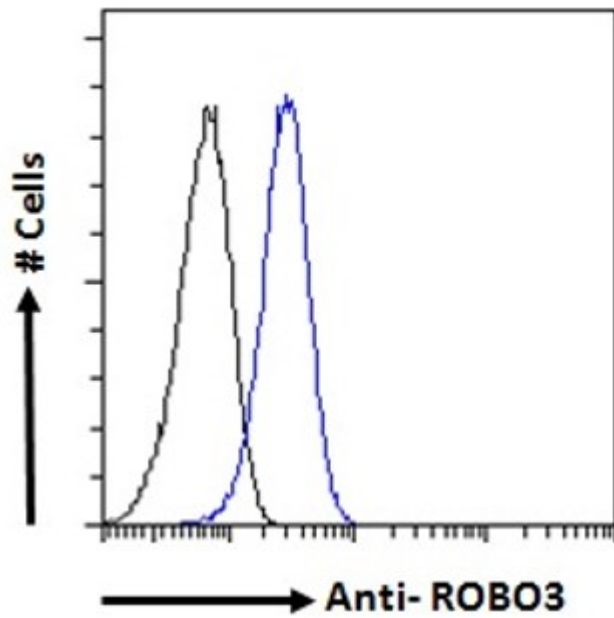
**This antibody has been successfully used in FC on Human:**

Denk AE, Kaufmann S, Stark K, Schedel J, Lowin T, Schubert T, Bosserhoff AK.

Slit3 inhibits Robo3-induced invasion of synovial fibroblasts in rheumatoid arthritis.

Arthritis Res Ther. 2010;12(2):R45.

PMID: 20298552



EB07057 Flow cytometric analysis of paraformaldehyde fixed U2OS cells (blue line), permeabilized with 0.5% Triton. Primary incubation 1hr (10ug/ml) followed by Alexa Fluor 488 secondary antibody (1ug/ml). IgG control: Unimmunized goat IgG (black line) followed by Alexa Fluor 488 secondary antibody.