



UK Office

Everest Biotech Ltd

Cherwell Innovation Centre
77 Heyford Park
Upper Heyford
Oxfordshire
OX25 5HD
UK

Enquiries:

info@everestbiotech.com

Sales:

sales@everestbiotech.com

Tech support:

support@everestbiotech.com

Tel: +44 (0)1869 238326

Fax: +44 (0)1869 238327

US Office

Everest Biotech c/o Abcore

405 Maple Street, Suite A106
Ramona,
CA 92065
USA

Inquiries:

info@everestbiotech.com

Sales:

usasales@everestbiotech.com

Tech support:

support@everestbiotech.com

Tel: 888-320-4628 (toll-free)

Fax: 888-841-9041

www.everestbiotech.com

**Research Use Only. Not for
diagnostic or therapeutic use.**

EB09144 - Goat Anti-ROR1 Antibody

Size: 100µg specific antibody in 200µl



Target Protein

Principal Names: ROR1, receptor tyrosine kinase-like orphan receptor 1, MGC99659, NTRKR1, dJ537F10.1, neurotrophic tyrosine kinase receptor-related 1

Official Symbol: ROR1

Accession Number(s): NP_005003.2

Human GeneID(s): [4919](#)

Non-Human GeneID(s): 26563 (mouse), 362550 (rat)

Important Comments: This antibody is expected to recognize isoform 1 (NP_005003.2) only.

Immunogen

Peptide with sequence C-GNKSQKPYKIDSKQA, from the C-Terminus (near) of the protein sequence according to NP_005003.2.

Please note the [peptide](#) is available for sale.

Purification and Storage

Purified from goat serum by ammonium sulphate precipitation followed by antigen affinity chromatography using the immunizing peptide.

Supplied at 0.5 mg/ml in Tris saline, 0.02% sodium azide, pH7.3 with 0.5% bovine serum albumin.

Aliquot and store at -20°C. Minimize freezing and thawing.

Applications Tested

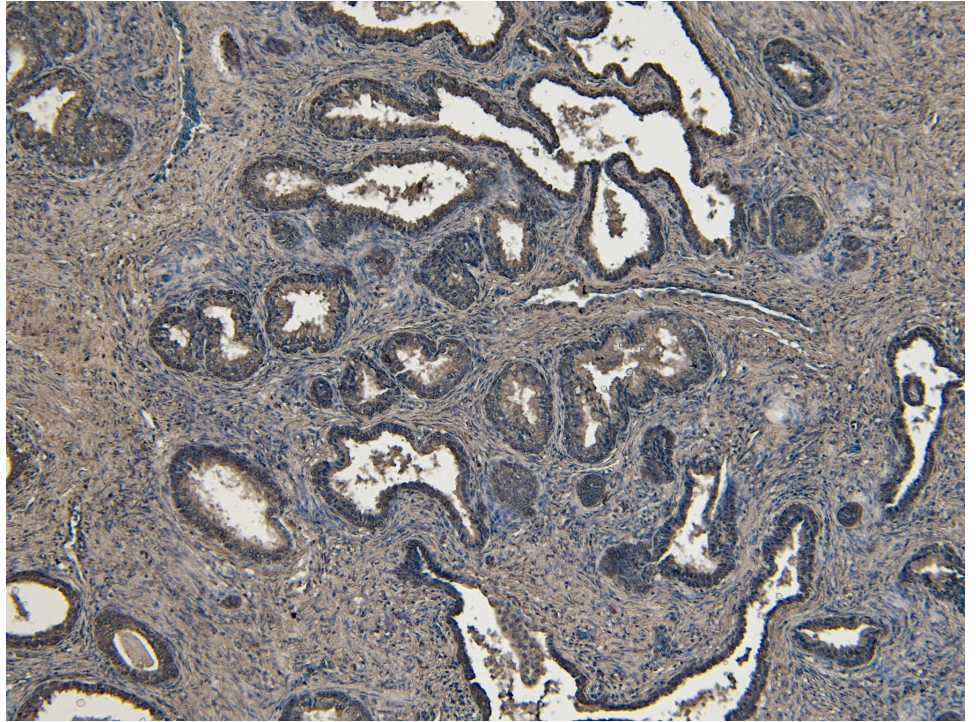
Peptide ELISA: antibody detection limit dilution 1:128000.

IHC: Paraffin embedded Human Prostate. Recommended concentration: 4-6µg/ml.

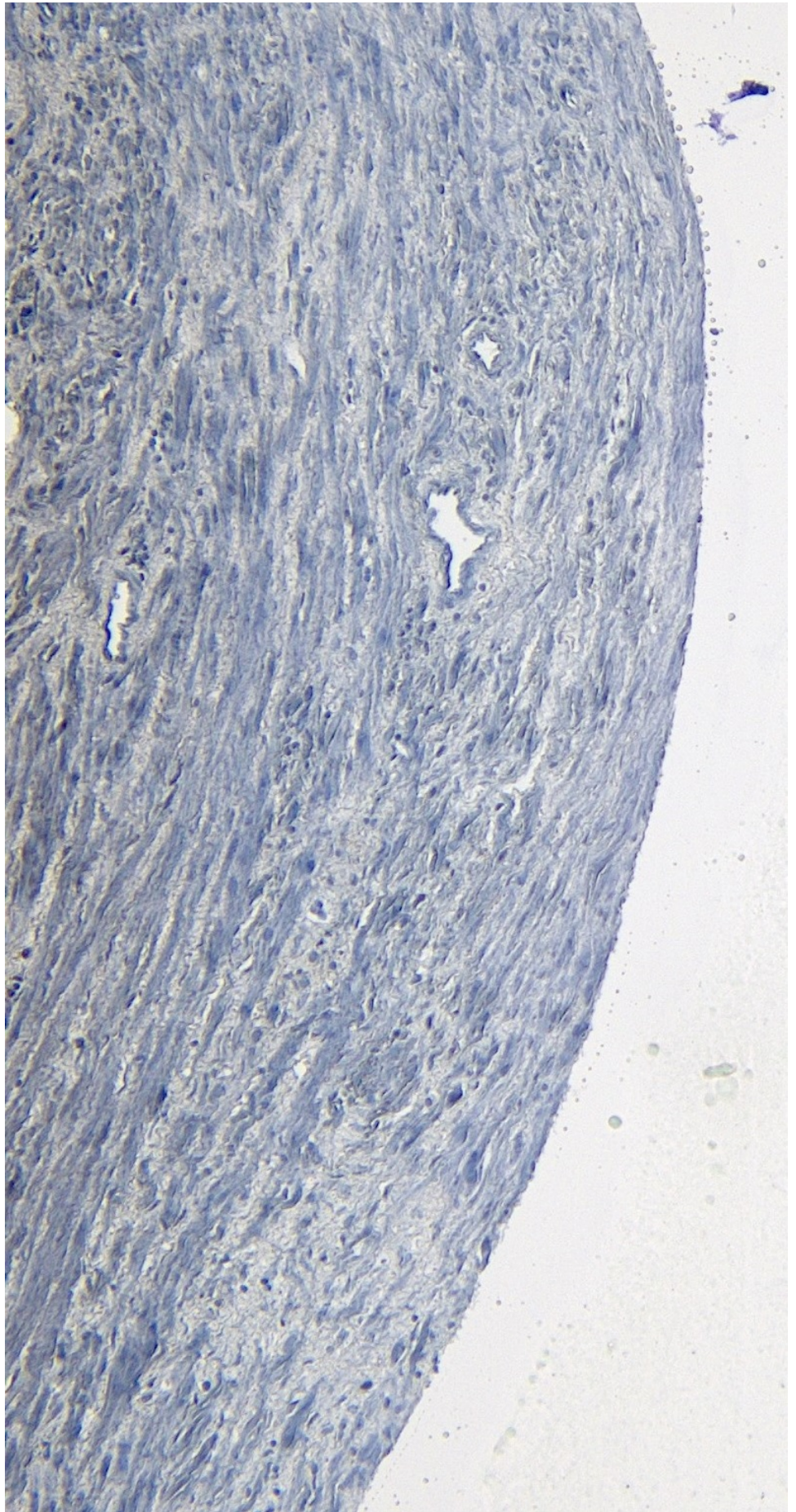
Species Reactivity

Tested: Human

Expected from sequence similarity: Human, Mouse, Rat



EB09144 (6µg/ml) staining of paraffin embedded Human Prostate. Heat induced antigen retrieval with citrate buffer pH 6, HRP-staining.



EB09144 Negative Control showing staining of paraffin embedded Human Prostate, with no primary antibody.