

International Office

Everest Biotech Ltd

Vector Laboratories, Inc.
6737 Mowry Ave
Newark, CA 94560
United States

Customer Service:

customerservice@vectorlabs.com

Technical Service:

technical@vectorlabs.com

Tel: +1 (800) 227-6666

www.everestbiotech.com

**Research Use Only. Not for
diagnostic or therapeutic use.**

EB06468 - Goat Anti-RORA Antibody

Size: 100µg specific antibody in 200µl



Target Protein

Principal Names: RORA, ROR1, ROR2, ROR3, RZRA, NR1F1, RAR-related orphan receptor A, ROR-alpha, transcription factor RZR-alpha, RAR-related orphan receptor alpha, retinoic acid receptor-related orphan receptor alpha

Official Symbol: RORA

Accession Number(s): NP_002934.1; NP_599022.1; NP_599023.1; NP_599024.1

Human GeneID(s): [6095](#)

Important Comments: This antibody is expected to recognise all reported isoforms

Immunogen

Peptide with sequence CTSEFEPAMQIDG, from the C Terminus of the protein sequence according to NP_002934.1; NP_599022.1; NP_599023.1; NP_599024.1.

Please note the [peptide](#) is available for sale.

Purification and Storage

Purified from goat serum by ammonium sulphate precipitation followed by antigen affinity chromatography using the immunizing peptide.

Supplied at 0.5 mg/ml in Tris saline, 0.02% sodium azide, pH7.3 with 0.5% bovine serum albumin.

Aliquot and store at -20°C. Minimize freezing and thawing.

Applications Tested

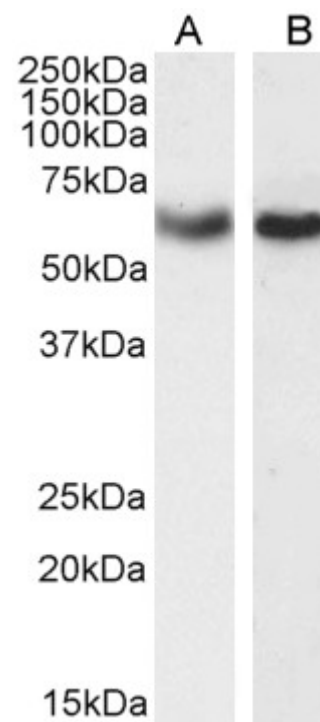
Peptide ELISA: antibody detection limit dilution 1:32000.

Western blot: Approx 60kDa band observed in lysates of cell lines HeLa and Jurkat (calculated MW of 60kDa according to NP_002934.1). Recommended concentration: 1-3µg/ml. Primary incubation 1 hour at room temperature.

Species Reactivity

Tested: Human

Expected from sequence similarity: Human, Mouse, Rat



EB06468 (1 µg/ml) staining of HeLa (A) and Jurkat (B) cell lysate (35 µg protein in RIPA buffer). Detected by chemiluminescence.