

UK Office

Everest Biotech Ltd

Cherwell Innovation Centre
77 Heyford Park
Upper Heyford
Oxfordshire
OX25 5HD
UK

Enquiries:

info@everestbiotech.com

Sales:

sales@everestbiotech.com

Tech support:

support@everestbiotech.com

Tel: +44 (0)1869 238326

www.everestbiotech.com

**Research Use Only. Not for
diagnostic or therapeutic use.**

EB05363 - Goat Anti-RP11 / PRPF31 Antibody

Size: 100µg specific antibody in 200µl



Target Protein

Principal Names: PRPF31, PRP31 pre-mRNA processing factor 31 homolog (yeast), RP11, PRP31, NY-BR-99, DKFZp566J153, pre-mRNA processing factor 31 homolog (yeast), Protein 61K, PRP31 pre-mRNA processing factor 31 homolog (S. cerevisiae), pre-mRNA processing factor 31 homolog

Official Symbol: PRPF31

Accession Number(s): NP_056444.3

Human GeneID(s): [26121](#)

Immunogen

Peptide with sequence C-LKVKGEKSGLMST, from the C Terminus of the protein sequence according to NP_056444.3.

Please note the [peptide](#) is available for sale.

Purification and Storage

Purified from goat serum by ammonium sulphate precipitation followed by antigen affinity chromatography using the immunizing peptide.

Supplied at 0.5 mg/ml in Tris saline, 0.02% sodium azide, pH7.3 with 0.5% bovine serum albumin.

Aliquot and store at -20°C. Minimize freezing and thawing.

Applications Tested

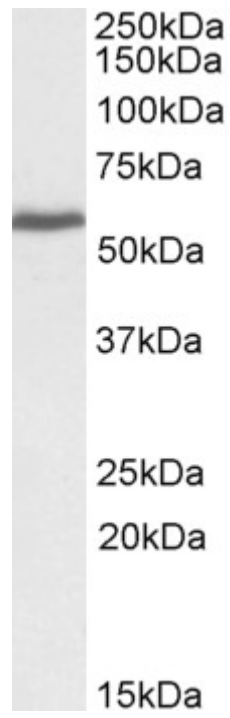
Peptide ELISA: antibody detection limit dilution 1:16000.

Western blot: Approx 60kDa band observed in lysates of cell line A431 (calculated MW of 55.4kDa according to NP_056444.3. Recommended concentration: 0.3-1.0µg/ml.

Species Reactivity

Tested: Human

Expected from sequence similarity: Human, Dog



EB05363 (0.3 μ g/ml) staining of cell line A431 lysate (35 μ g protein in RIPA buffer). Primary incubation was 1 hour. Detected by chemiluminescence.