



UK Office

Everest Biotech Ltd

Cherwell Innovation Centre
77 Heyford Park
Upper Heyford
Oxfordshire
OX25 5HD
UK

Enquiries:

info@everestbiotech.com

Sales:

sales@everestbiotech.com

Tech support:

support@everestbiotech.com

Tel: +44 (0)1869 238326

www.everestbiotech.com

**Research Use Only. Not for
diagnostic or therapeutic use.**

EB12150 - Goat Anti-RPA1 / RPA70 (aa323-337) Antibody

Size: 100µg specific antibody in 200µl



Target Protein

Principal Names: RPA1, replication protein A1, 70kDa, HSSB, MST075, REPA1, RF-A, RP-A, RPA70, MSTP075, RF-A protein 1, RP-A p70, replication factor A protein 1, replication protein A 70 kDa DNA-binding subunit, single-stranded DNA-binding protein

Official Symbol: RPA1

Accession Number(s): NP_002936.1

Human GeneID(s): [6117](#)

Immunogen

Peptide with sequence CKSYEDATKITVRSN, from the internal region of the protein sequence according to NP_002936.1.

Please note the [peptide](#) is available for sale.

Purification and Storage

Purified from goat serum by ammonium sulphate precipitation followed by antigen affinity chromatography using the immunizing peptide.

Supplied at 0.5 mg/ml in Tris saline, 0.02% sodium azide, pH7.3 with 0.5% bovine serum albumin.

Aliquot and store at -20°C. Minimize freezing and thawing.

Applications Tested

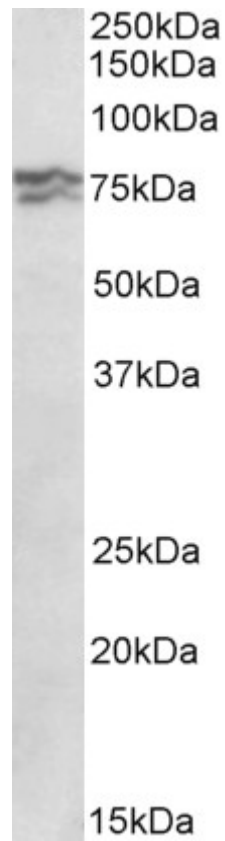
Peptide ELISA: antibody detection limit dilution 1:128000.

Western blot: Approx 70+80kDa band observed in lysates of cell line HeLa (calculated MW of 68.1kDa according to NP_002936.1). The upper band likely represents the acetylated protein. A 75kDa band was observed in several Mouse cell lines and in lysates of Mouse Lymph Node. Recommended concentration: 0.3-1µg/ml.

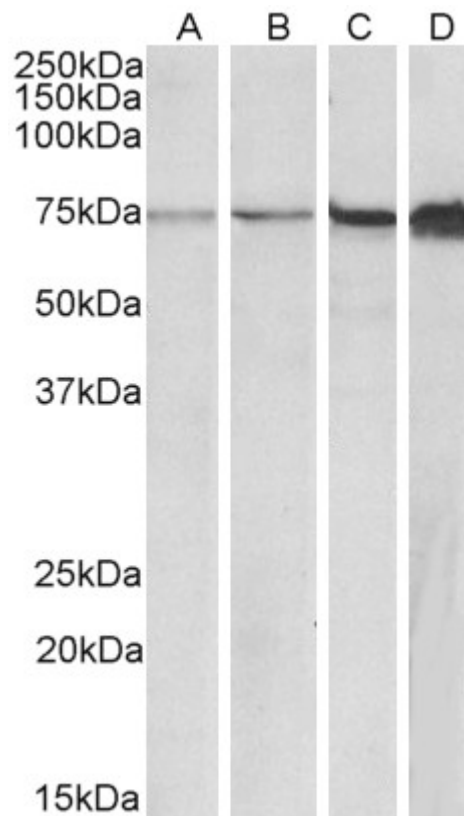
Species Reactivity

Tested: Human, Mouse

Expected from sequence similarity: Human



EB12150 (0.3 μ g/ml) staining of HeLa lysate (35 μ g protein in RIPA buffer). Primary incubation was 1 hour. Detected by chemiluminescence.



EB12150 (0.5 μ g/ml) staining of NIH3T3 (A), 3T3L1 (B), Mouse Lymph Node (C) and NSO (D) lysates (35 μ g protein in RIPA buffer). Primary incubation was 1 hour. Detected by chemiluminescence.