



## International Office

### Everest Biotech Ltd

Vector Laboratories, Inc.  
6737 Mowry Ave  
Newark, CA 94560  
United States

Customer Service:

[customerservice@vectorlabs.com](mailto:customerservice@vectorlabs.com)

Technical Service:

[technical@vectorlabs.com](mailto:technical@vectorlabs.com)

Tel: +1 (800) 227-6666

[www.everestbiotech.com](http://www.everestbiotech.com)

**Research Use Only. Not for  
diagnostic or therapeutic use.**

## EB11851 - Goat Anti-RPL23 Antibody

Size: 100µg specific antibody in 200µl



### Target Protein

**Principal Names:** 60S ribosomal protein L17, 60S ribosomal protein L23, L23, MGC111167, MGC117346, MGC72008, OTTHUMP00000164151, OTTHUMP00000164153, ribosomal protein L17, ribosomal protein L23, rpL17, RPL23

**Official Symbol:** RPL23

**Accession Number(s):** NP\_000969.1

**Human GeneID(s):** [9349](#)

**Non-Human GeneID(s):** 65019 (mouse), 29282 (rat)

### Immunogen

Peptide with sequence KECADLWPRIASN, from the C Terminus of the protein sequence according to NP\_000969.1.

Please note the [peptide](#) is available for sale.

### Purification and Storage

Purified from goat serum by ammonium sulphate precipitation followed by antigen affinity chromatography using the immunizing peptide.

Supplied at 0.5 mg/ml in Tris saline, 0.02% sodium azide, pH7.3 with 0.5% bovine serum albumin.

Aliquot and store at -20°C. Minimize freezing and thawing.

### Applications Tested

**Peptide ELISA:** antibody detection limit dilution 1:128000.

**Western blot:** Approx 16kDa band observed in lysates of Human Colorectal Cancer and of cell lines NIH3T3 and HeLa (calculated MW of 14.9kDa according to NP\_000969.1).

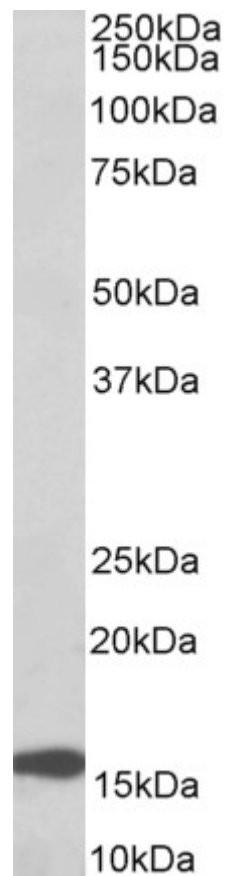
Recommended concentration: 0.1-0.3µg/ml. Primary incubation was 1 hour.

**IHC:** Paraffin embedded Human Tonsil and Liver. Recommended concentration: 5µg/ml.

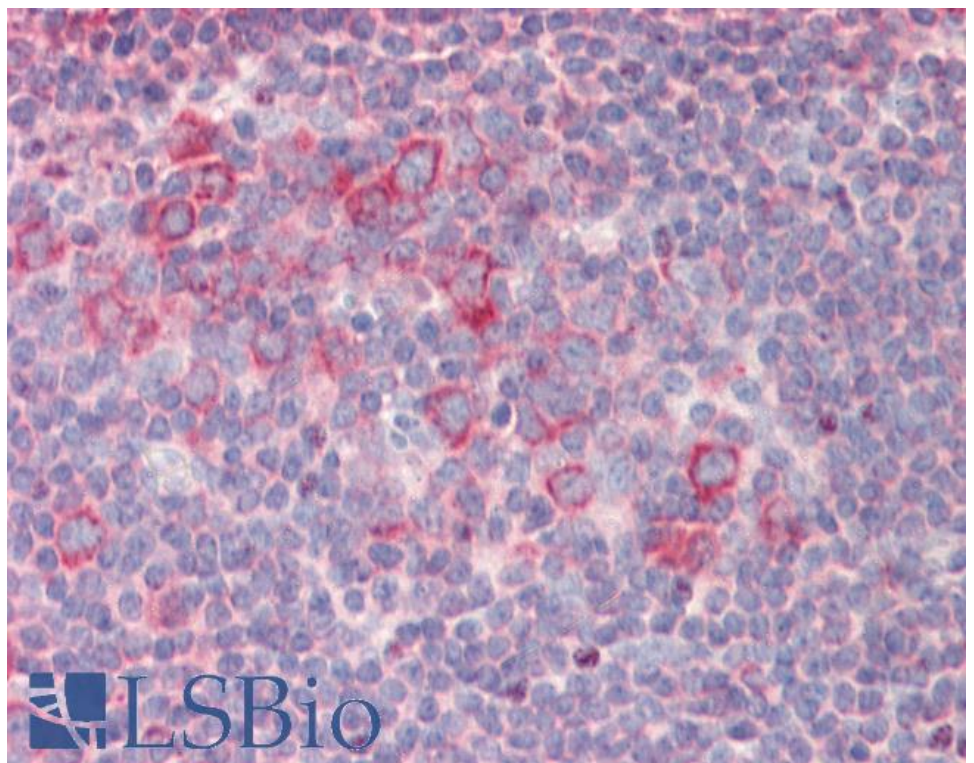
### Species Reactivity

**Tested:** Human, Mouse

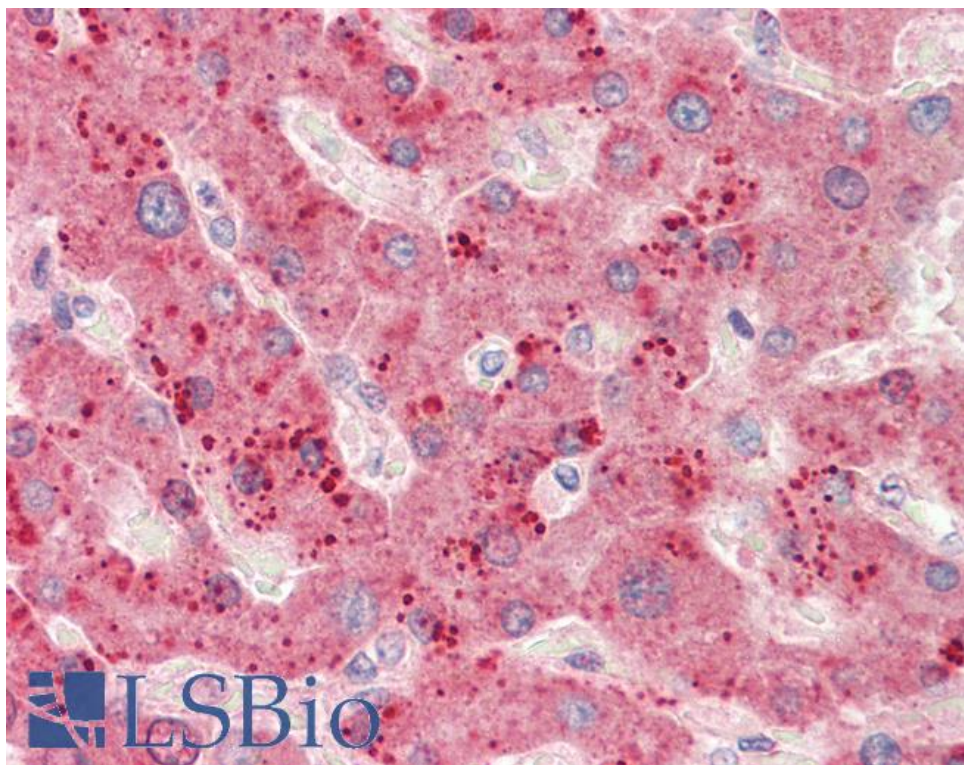
**Expected from sequence similarity:** Human, Mouse, Rat, Pig, Cow



EB11851 (0.1µg/ml) staining of Human Colorectal Cancer lysate (35µg protein in RIPA buffer). Detected by chemiluminescence.



EB11851 (5µg/ml) staining of paraffin embedded Human Tonsil. Steamed antigen retrieval with citrate buffer pH 6, AP-staining.



EB11851 (5µg/ml) staining of paraffin embedded Human Liver. Steamed antigen retrieval with citrate buffer pH 6, AP-staining.