



UK Office

Everest Biotech Ltd

Cherwell Innovation Centre
77 Heyford Park
Upper Heyford
Oxfordshire
OX25 5HD
UK

Enquiries:

info@everestbiotech.com

Sales:

sales@everestbiotech.com

Tech support:

support@everestbiotech.com

Tel: +44 (0)1869 238326

Fax: +44 (0)1869 238327

US Office

Everest Biotech c/o Abcore

405 Maple Street, Suite A106
Ramona,
CA 92065
USA

Inquiries:

info@everestbiotech.com

Sales:

usasales@everestbiotech.com

Tech support:

support@everestbiotech.com

Tel: 888-320-4628 (toll-free)

Fax: 888-841-9041

www.everestbiotech.com

**Research Use Only. Not for
diagnostic or therapeutic use.**

EB11851 - Goat Anti-RPL23 Antibody

Size: 100µg specific antibody in 200µl



Target Protein

Principal Names: 60S ribosomal protein L17, 60S ribosomal protein L23, L23, MGC111167, MGC117346, MGC72008, OTTHUMP00000164151, OTTHUMP00000164153, ribosomal protein L17, ribosomal protein L23, rpL17, RPL23

Official Symbol: RPL23

Accession Number(s): NP_000969.1

Human GeneID(s): [9349](#)

Non-Human GeneID(s): 65019 (mouse), 29282 (rat)

Immunogen

Peptide with sequence KECADLWPRIASN, from the C Terminus of the protein sequence according to NP_000969.1.

Please note the [peptide](#) is available for sale.

Purification and Storage

Purified from goat serum by ammonium sulphate precipitation followed by antigen affinity chromatography using the immunizing peptide.

Supplied at 0.5 mg/ml in Tris saline, 0.02% sodium azide, pH7.3 with 0.5% bovine serum albumin.

Aliquot and store at -20°C. Minimize freezing and thawing.

Applications Tested

Peptide ELISA: antibody detection limit dilution 1:128000.

Western blot: Approx 16kDa band observed in lysates of Human Colorectal Cancer and of cell lines NIH3T3 and HeLa (calculated MW of 14.9kDa according to NP_000969.1).

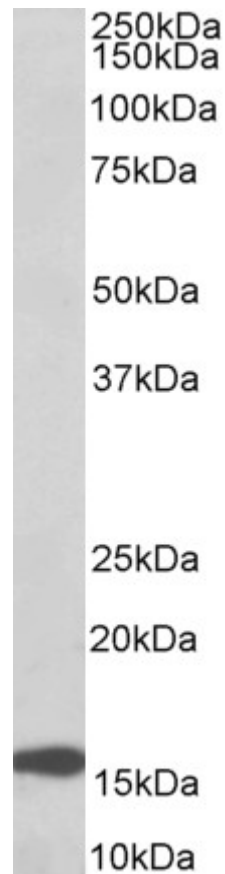
Recommended concentration: 0.1-0.3µg/ml. Primary incubation was 1 hour.

IHC: Paraffin embedded Human Tonsil and Liver. Recommended concentration: 5µg/ml.

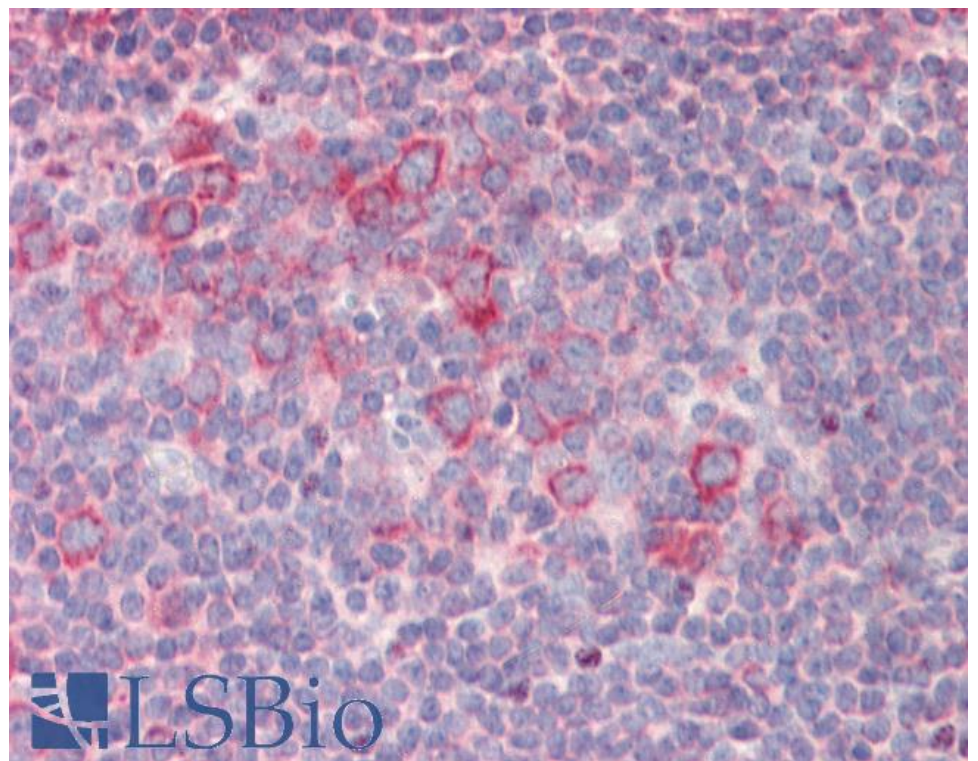
Species Reactivity

Tested: Human, Mouse

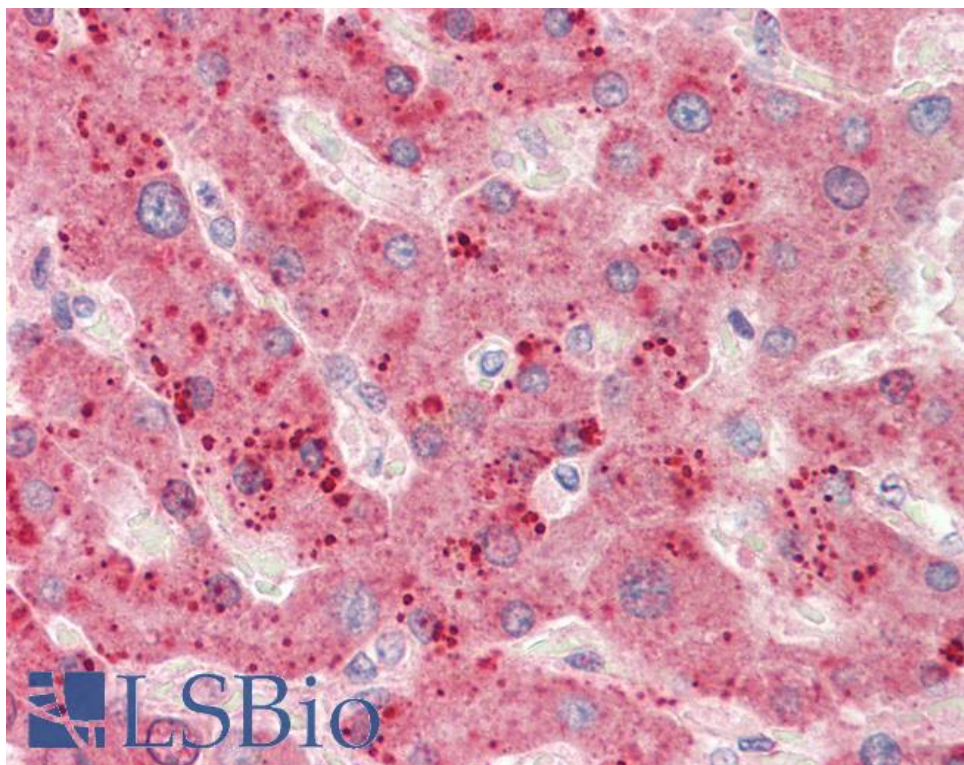
Expected from sequence similarity: Human, Mouse, Rat, Pig, Cow



EB11851 (0.1µg/ml) staining of Human Colorectal Cancer lysate (35µg protein in RIPA buffer). Detected by chemiluminescence.



EB11851 (5µg/ml) staining of paraffin embedded Human Tonsil. Steamed antigen retrieval with citrate buffer pH 6, AP-staining.



EB11851 (5µg/ml) staining of paraffin embedded Human Liver. Steamed antigen retrieval with citrate buffer pH 6, AP-staining.