



## UK Office

### Everest Biotech Ltd

Cherwell Innovation Centre  
77 Heyford Park  
Upper Heyford  
Oxfordshire  
OX25 5HD  
UK

Enquiries:

[info@everestbiotech.com](mailto:info@everestbiotech.com)

Sales:

[sales@everestbiotech.com](mailto:sales@everestbiotech.com)

Tech support:

[support@everestbiotech.com](mailto:support@everestbiotech.com)

Tel: +44 (0)1869 238326

Fax: +44 (0)1869 238327

## US Office

### Everest Biotech c/o Abcore

405 Maple Street, Suite A106  
Ramona,  
CA 92065  
USA

Inquiries:

[info@everestbiotech.com](mailto:info@everestbiotech.com)

Sales:

[usasales@everestbiotech.com](mailto:usasales@everestbiotech.com)

Tech support:

[support@everestbiotech.com](mailto:support@everestbiotech.com)

Tel: 888-320-4628 (toll-free)

Fax: 888-841-9041

[www.everestbiotech.com](http://www.everestbiotech.com)

**Research Use Only. Not for  
diagnostic or therapeutic use.**

## EB08865 - Goat Anti-RPS6KA2 Antibody

Size: 100µg specific antibody in 200µl



### Target Protein

**Principal Names:** RPS6KA2, ribosomal protein S6 kinase, 90kDa, polypeptide 2, HU-2, MAPKAPK1C, RSK, RSK3, S6K-alpha, S6K-alpha2, p90-RSK3, pp90RSK3, ribosomal S6 kinase 3, ribosomal protein S6 kinase alpha 2, ribosomal protein S6 kinase, 90kD, polypeptide 2

**Official Symbol:** RPS6KA2

**Accession Number(s):** NP\_066958.2; NP\_001006933.1

**Human GeneID(s):** [6196](#)

**Important Comments:** This antibody is expected to recognize both reported isoforms (NP\_066958.2; NP\_001006933.1)

### Immunogen

Peptide with sequence C-EYLSPNQLSRQDVH, from the C Terminus (near) of the protein sequence according to NP\_066958.2; NP\_001006933.1.

Please note the [peptide](#) is available for sale.

### Purification and Storage

Purified from goat serum by ammonium sulphate precipitation followed by antigen affinity chromatography using the immunizing peptide.

Supplied at 0.5 mg/ml in Tris saline, 0.02% sodium azide, pH7.3 with 0.5% bovine serum albumin.

Aliquot and store at -20°C. Minimize freezing and thawing.

### Applications Tested

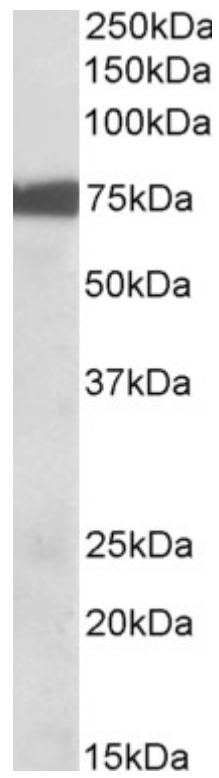
**Peptide ELISA:** antibody detection limit dilution 1:64000.

**Western blot:** Approx 75kDa band observed in Rat Lung lysates (calculated MW of 83.2kDa according to Rat NP\_476469.11). Recommended concentration: 0.01-0.03µg/ml.

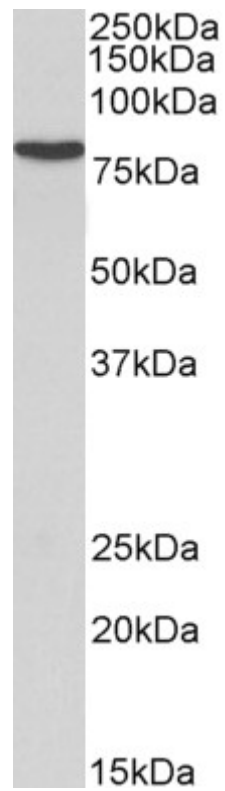
### Species Reactivity

**Tested:** Rat

**Expected from sequence similarity:** Human, Mouse, Rat, Horse



EB08865 (0.01µg/ml) staining of Mouse Lung lysate (35µg protein in RIPA buffer). Primary incubation was 1 hour. Detected by chemiluminescence.



EB08865 (1µg/ml) staining of Rat Lung lysate (35µg protein in RIPA buffer). Primary incubation was 1 hour. Detected by chemiluminescence.